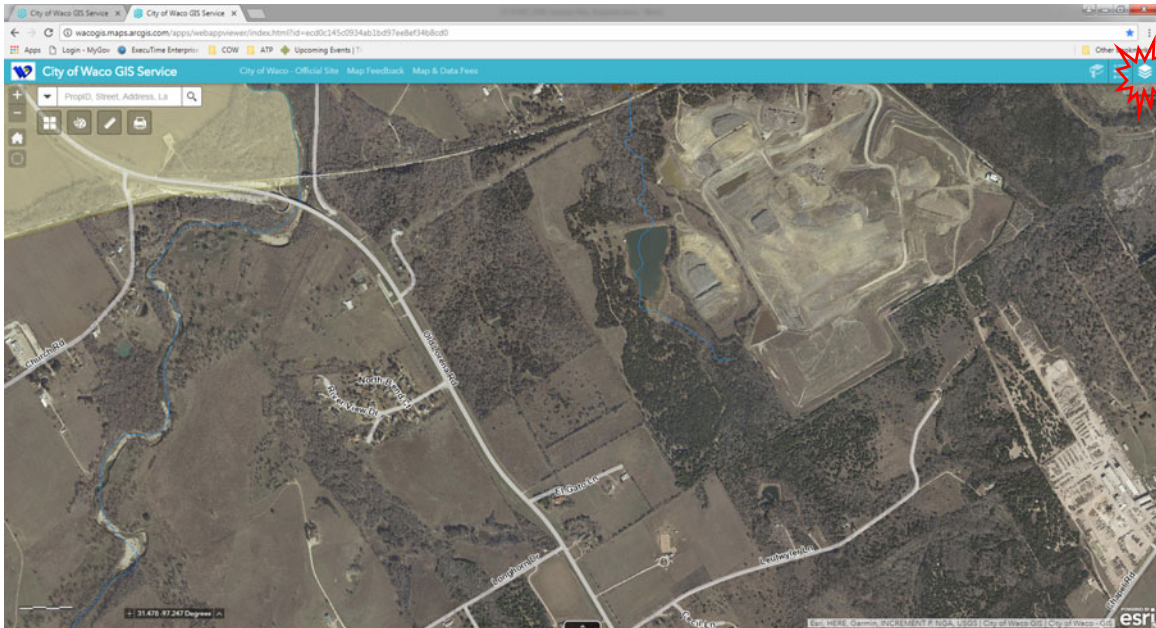


How to View Zoning Districts Using COW Online GIS Map:

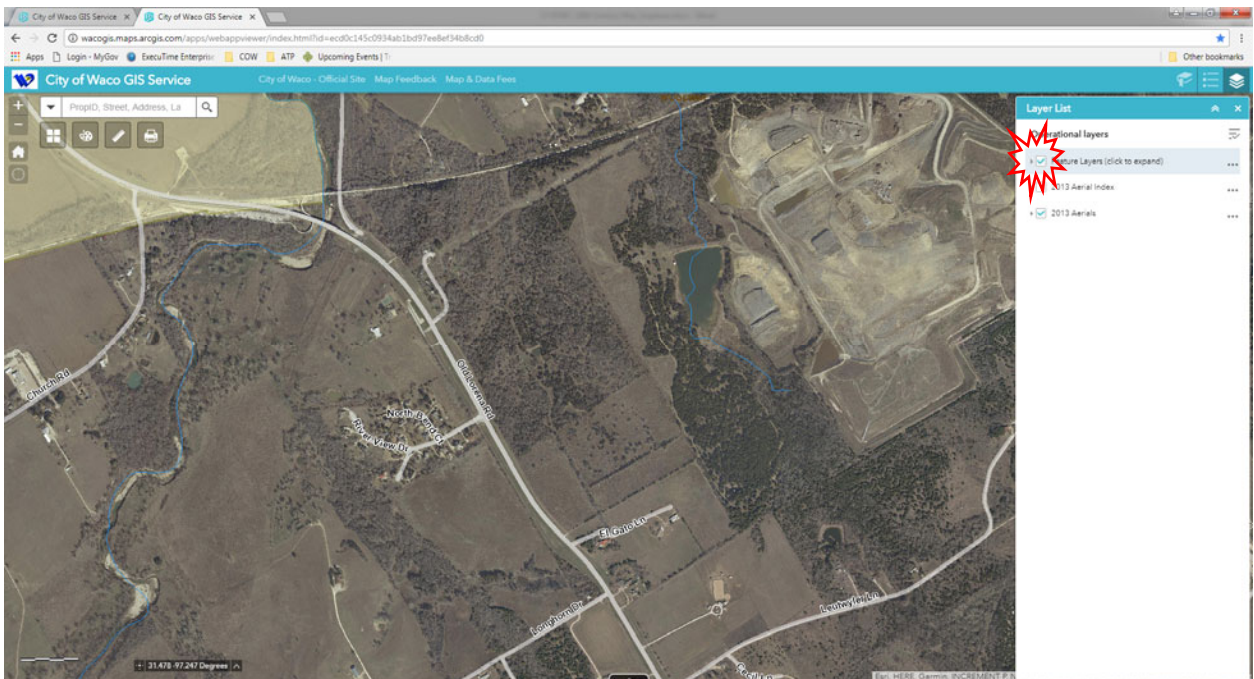
<http://wacogis.maps.arcgis.com/apps/webappviewer/index.html?id=ecd0c145c0934ab1bd97ee8ef34b8cd0>

Recommended browsers: Chrome or Internet Explorer

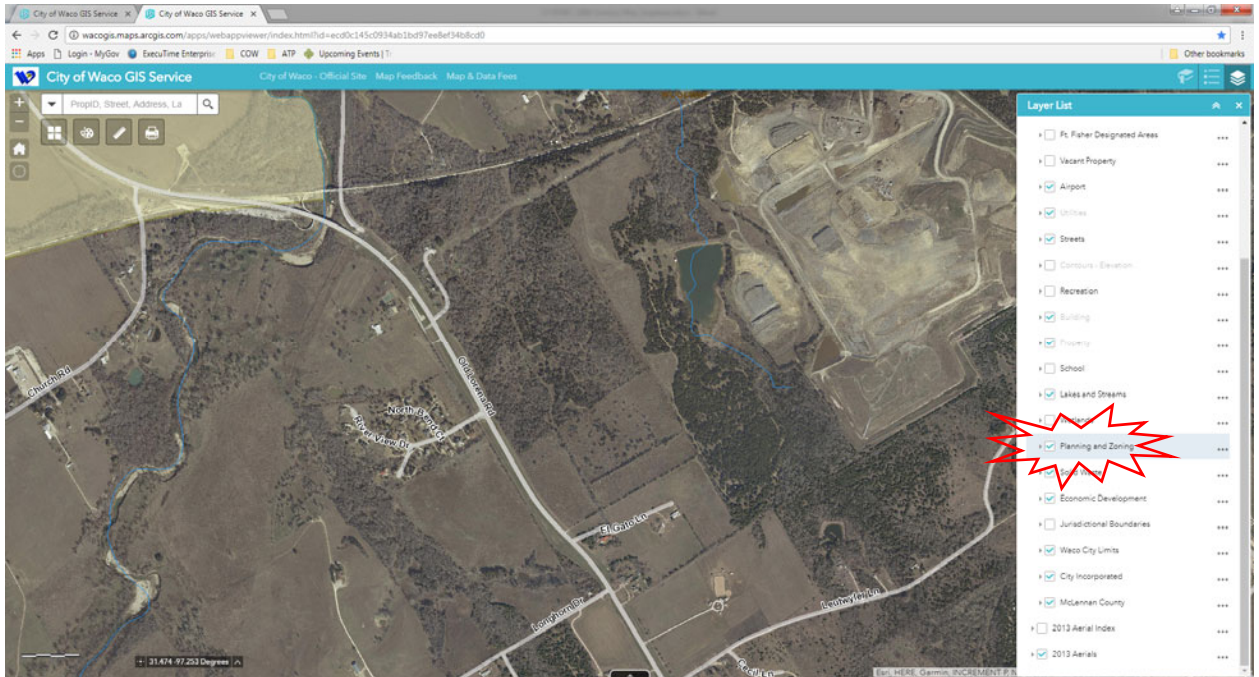
1. Click on “Layer List” (looks like a stack of papers)



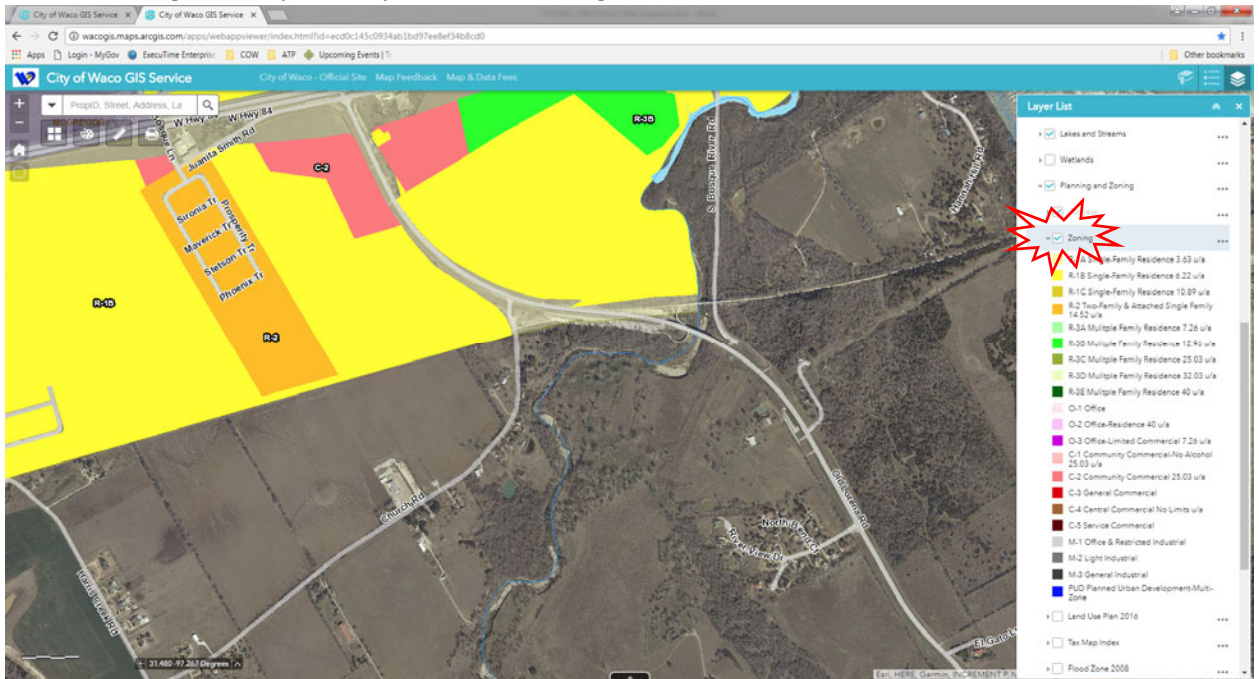
2. Expand “Feature Layers” (click gray arrow)



3. Expand "Planning and Zoning" (click on gray arrow)



4. Check "Zoning" and expand so you can see the legend.



From here you can scroll around to view the different zoning districts in the city.