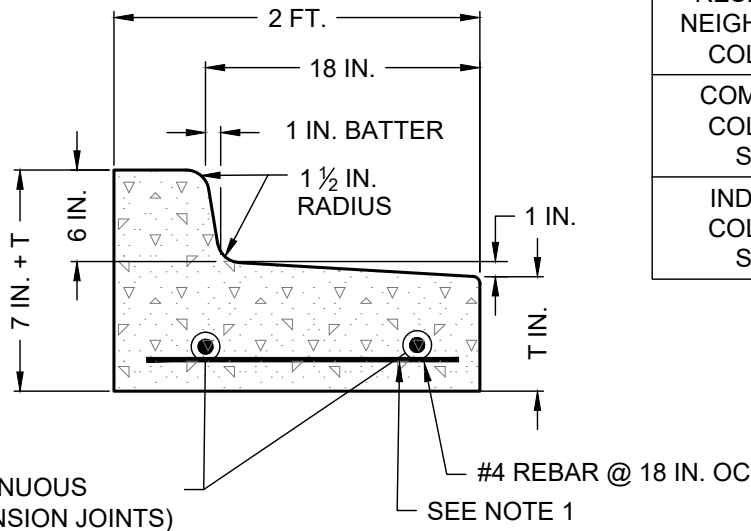


### DIRECT FLOW

STREET FUNCTIONAL CLASSIFICATION	FLEXIBLE PAVEMENT THICKNESS "T"
LOCAL	7 1/2 IN.
RESIDENTIAL / NEIGHBORHOOD COLLECTOR	8 IN.
COMMERCIAL COLLECTOR STREET	9 IN.
INDUSTRIAL COLLECTOR STREET	8 IN.



### INDIRECT FLOW

#### NOTE:

1. TRANSVERSE BARS MAY BE OMITTED WHEN CONCRETE FOR CURB AND GUTTER IS PLACED WITH A SELF-PROPELLED CURB MACHINE THAT PROVIDES CORRECT PLACEMENT OF THE LONGITUDINAL BARS.
2. STANDARD CURB AND GUTTER SHALL BE PLACED AND/OR REPLACED IN ACCORDANCE WITH [ST-20A](#) UNLESS OTHER DETAILS ARE SHOWN IN THE PLANS AND APPROVED BY THE CITY.

## STANDARD CURB AND GUTTER DETAILS (NO SCALE)



### ENGINEERING DIVISION

**DISCLAIMER:** THE USE OF THIS STANDARD IS GOVERNED BY THE "TEXAS ENGINEERING PRACTICE ACT". NO WARRANTY OF ANY KIND IS MADE BY THE CITY OF WACO FOR ANY PURPOSE WHATSOEVER. THE CITY OF WACO ASSUMES NO RESPONSIBILITY FOR THE CONVERSION OF THIS STANDARD TO OTHER FORMATS OR FOR INCORRECT RESULTS OR DAMAGES RESULTING FROM ITS USE.

REVISIONS			
NO.	COMMENTS	BY	DATE
2	ADD STREET TABLE; MOD DIMS TO REFLECT "T"	MZ	04/28/2025
1	ADD NOTE 2	MZ	11/15/2024
##	DESCRIPTION	FL	MM/DD/YYYY

DATE  
01/01/2024

ST-15