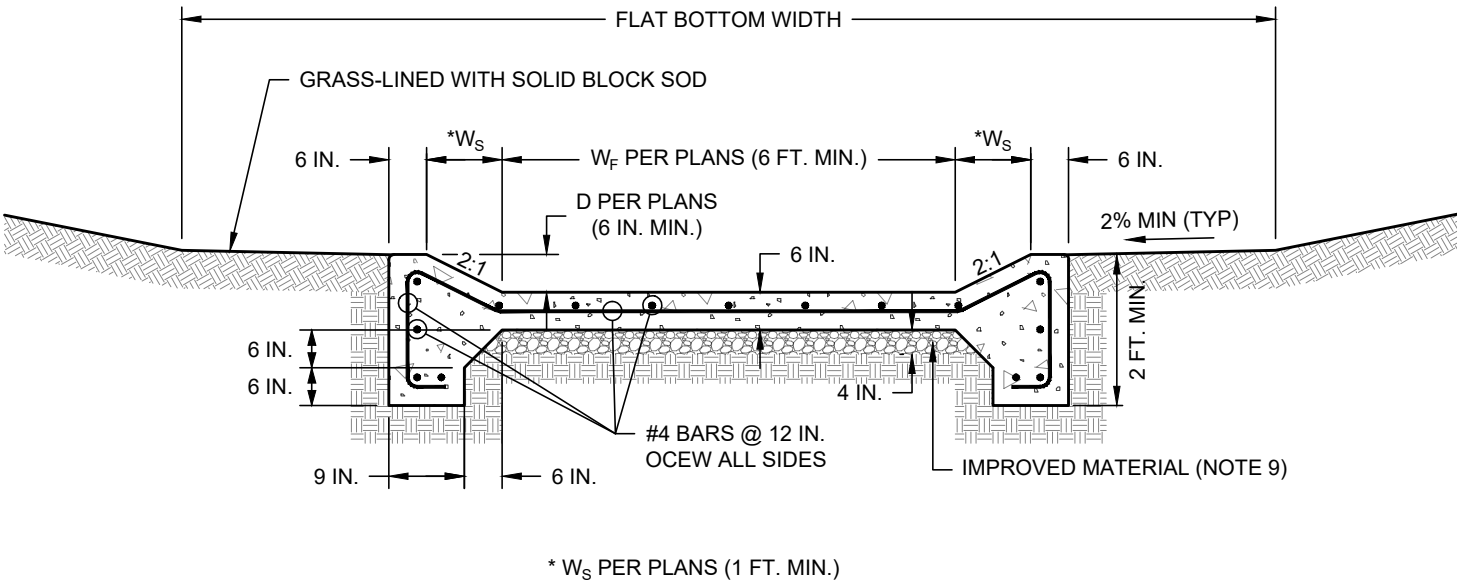


CONFIGURATION SUMMARY TABLE				
LOCATION IDENTIFICATION	W _F FT	W _S FT.	D IN.	SLOPE %

CONFIGURATION SUMMARY TABLE SHALL BE SEALED, SIGNED, AND DATED BY RESPONSIBLE PROFESSIONAL ENGINEER



- NOTES:**
1. CHANNEL SHALL BE DESIGNED TO SUIT PROJECT SPECIFIC SITE.
 2. CHANNEL CONFIGURATION IN PLANS TO BE CONSISTENT WITH HYDROLOGIC AND HYDRAULIC COMPUTATIONS IN ACCORDANCE WITH CURRENT CITY OF WACO STORMWATER DESIGN CRITERIA.
 3. MINIMUM LONGITUDINAL SLOPE IS 0.5 PERCENT.
 4. PLEASE REFER TO DETAIL [G-7](#) FOR GENERAL CONCRETE NOTES.
 5. WORK SHALL BEGIN AT DOWNSTREAM END OF CHANNEL AND PROGRESS UPSTREAM.
 6. CONCRETE MUST BE PLACED TO ENSURE POSITIVE DRAINAGE SLOPE.
 7. CONCRETE SHALL BE PLACED MONOLITHICALLY ACROSS CHANNEL.
 8. TRANSVERSE EXPANSION JOINTS SHALL BE PLACED EVERY 600 FT. AT A MINIMUM, AND NO CLOSER THAN 200 FT.
 9. 4 INCH BASE. TYPE "A" MATERIAL PER STANDARD SPECIFICATIONS FOR CONSTRUCTION SECTION 4.2 EXCAVATION AND BACKFILL PART 2: PRODUCT A. MATERIALS 3. TRENCH BACKFILL A. TYPE "A." MATERIAL OR RECYCLED CRUSHED CONCRETE (TxDOT STANDARD SPECIFICATIONS FOR CONSTRUCTION ITEM 247 FLEXIBLE BASE TYPE D GRADE 1-2, EXCLUDING TYPE A MATERIAL, WITH MINIMUM P.I. OF FOUR) MECHANICALLY COMPACTED TO 95% OF THE MAXIMUM DRY DENSITY (TEX-113-E).

CONCRETE PILOT CHANNEL

(NO SCALE)



ENGINEERING DIVISION

DISCLAIMER: THE USE OF THIS STANDARD IS GOVERNED BY THE "TEXAS ENGINEERING PRACTICE ACT". NO WARRANTY OF ANY KIND IS MADE BY THE CITY OF WACO FOR ANY PURPOSE WHATSOEVER. THE CITY OF WACO ASSUMES NO RESPONSIBILITY FOR THE CONVERSION OF THIS STANDARD TO OTHER FORMATS OR FOR INCORRECT RESULTS OR DAMAGES RESULTING FROM ITS USE.

REVISIONS			
NO.	COMMENTS	BY	DATE
##	DESCRIPTION	FL	MM/DD/YYYY

DATE
01/01/2024

SD-15