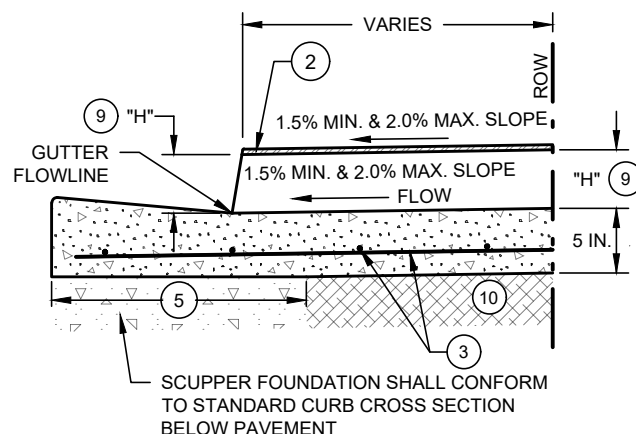
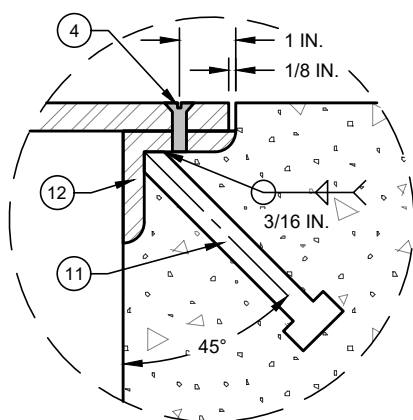


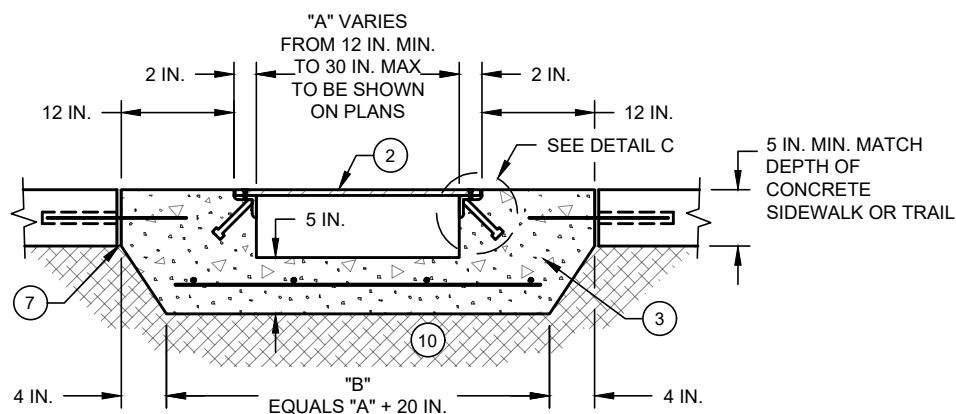
## PLAN VIEW



## SECTION A-A



### DETAIL C



## SECTION B-B

NOTES:

- 1 ENGINEER SHALL PREPARE AND PROVIDE HYDRAULIC CALCULATIONS AND ESTABLISH ADEQUACY OF DRAINAGE WAY.
- 2 1/2 IN. THICK GALVANIZED STEEL PLATE ASTM A-36. GALVANIZED STEEL PLATE SHALL BE DELIVERED AS ONE PIECE, CONFORMING TO THE REQUIRED SCUPPER DIMENSIONS. PLATES SHALL NOT BE SPICED. TOP SURFACE OF STEEL PLATE SHALL RECEIVE A SLIPNOT STEEL GRIP PLATE® (GRADE 3 COARSE) COATING AS MANUFACTURED BY TRACTION TECHNOLOGIES HOLDINGS, LLC (1-800-SLIPNOT) OR EQUIVALENT, COUNTERSUNK HOLES SHALL BE DRILLED, AND THEN THE ENTIRE STEEL PLATE SHALL BE HOT DIP GALVANIZED (GRADE 3 COARSE).
- 3 CONCRETE "SADDLE": CLASS A CONCRETE W/ #4 @ 12 IN. OCEW. FULLY EXTEND REINF INTO GUTTER PORTION OF NEW CURB AND GUTTER MAINTAINING MIN. 2 IN. CLEARANCE FROM SURFACES.
- 4 3/8 IN. FLATHEAD STAINLESS STEEL CAP SCREW. COUNTER SINK PLACED 2 IN. FROM EACH END AND AT MAXIMUM SPACING OF 8 IN.
- 5 SIDEWALK SCUPPER SHALL INCLUDE 10 LF OF NEW CURB AND GUTTER CENTERED ABOUT THE SCUPPER. WHEN CONSTRUCTING THE NEW CURB AND GUTTER EXISTING CURB AND GUTTER SHALL BE SAWED. IF THE SAWCUT WILL BE WITHIN 3 FT. OF AN EXISTING JOINT, THE EXISTING CURB AND GUTTER SHALL BE REMOVED AND REPLACED TO THE NEXT EXISTING JOINT.
- 6 WITHIN THESE LIMITS SCUPPER AND CONCRETE "SADDLE" SHALL CONFORM TO STANDARD CURB AND GUTTER SECTION REF [ST-15](#) & [ST-20](#). (SEE NOTE 5)
- 7 CONCRETE EXPANSION JOINT. THE SIDEWALK SCUPPER WITH ADJOINING CONCRETE "SADDLE" SHALL BE PLACED PER THIS STANDARD DETAIL TO REQUIRED GRADES PRIOR TO PLACEMENT OF ADJACENT SIDEWALK SECTIONS AND SHALL INCLUDE CONCRETE EXPANSION JOINTS PER [ST-9](#) AND AS SHOWN ON THIS STANDARD DETAIL WITH NON-SLEEVED PORTION OF 3/4 IN. DIAMETER 24 IN. LONG SMOOTH DOWELS PLACED IN THE CONCRETE "SADDLE" AT MAXIMUM SPACING OF 12 IN. WITH MINIMUM DISTANCE OF 3 IN. BETWEEN DOWEL AND 4 IN. X 1/2 IN. DIAMETER STUDS (SEE NOTE 11).
- 8 EXPANSION JOINT WITH 2 3/4 IN. DIAM. X 24 IN. LONG SMOOTH DOWEL BARS WITH 3/4 IN DIAM. PVC PIPE SLEEVE WITH CAPPED END. REF. [ST-9](#) FOR ADDITIONAL REQUIREMENTS.
- 9 "H" EQUALS CURB FACE HEIGHT MINIMUM 6 IN. DIMENSION TO BE NOTED ON PLANS.
- 10 4 IN. DEPTH OF TYPE MATERIAL PER [SW-2](#) SIDEWALK DETAILS LEGEND NOTE 2.
- 11 4 IN. X 1/2 IN. Ø STUDS PLACED 4 IN. FROM EACH END AND AT MAX SPACING OF 12 IN.
- 12 GALVANIZED STEEL L 2 IN. X 2 IN. X 3/8 IN. BOTH SIDES. FOR THE FABRICATION, THE HOLES SHALL BE DRILLED, THEN THE STUDS SHALL BE WELDED, FOLLOWED BY HOT DIP GALVANIZING OF THE FINISHED UNITS.

## SIDEWALK SCUPPER TYPE 2

(NO SCALE)



## ENGINEERING DIVISION

**DISCLAIMER:** THE USE OF THIS STANDARD IS GOVERNED BY THE "TEXAS ENGINEERING PRACTICE ACT". NO WARRANTY OF ANY KIND IS MADE BY THE CITY OF WACO FOR ANY PURPOSE WHATSOEVER. THE CITY OF WACO ASSUMES NO RESPONSIBILITY FOR THE CONVERSION OF THIS STANDARD TO OTHER FORMATS OR FOR INCORRECT RESULTS OR DAMAGES RESULTING FROM ITS USE.

REVISIONS			
NO.	COMMENTS	BY	DATE
##	DESCRIPTION	FL	MM/DD/YYYY

DATE \_\_\_\_\_

01/01/2024

SW-23