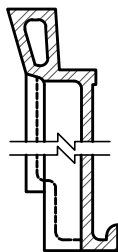


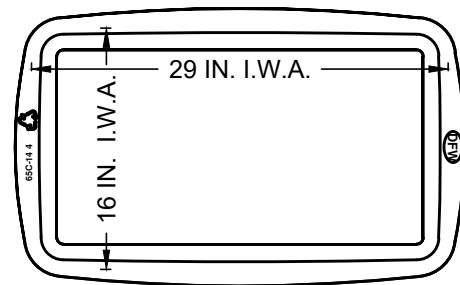


Ø 3 1/4 IN. X 3/8 IN. DEEP RECESS FOR AMR  
PAD W/ Ø 1 7/8 IN. HOLE FOR ENDPOINT

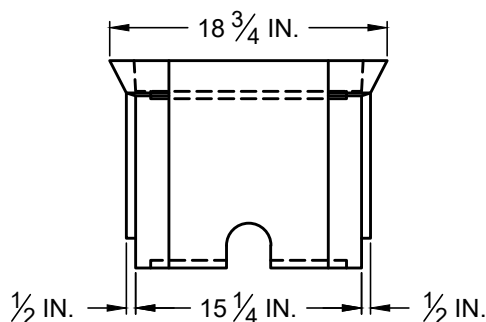


## RIB DETAIL

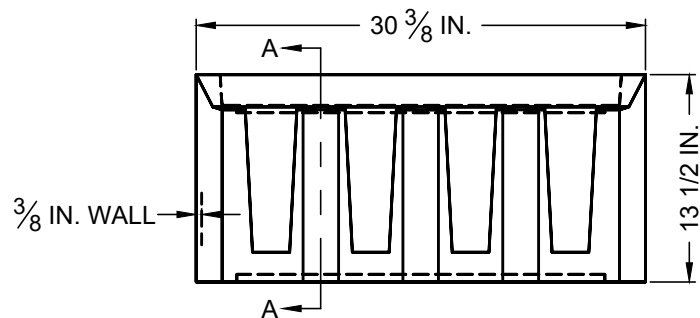
### SECTION A-A



### BOX FRONT VIEW

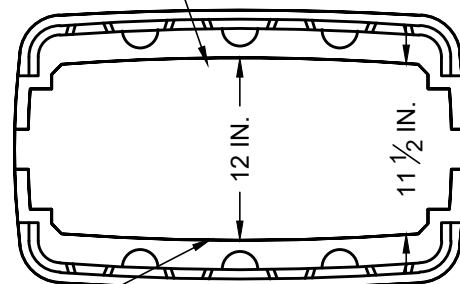


### BOX SIDE VIEW



### BOX FRONT VIEW

SIDES ARE BOWED OUT  $\frac{1}{2}$  IN.



BOTTOM FLANGE  
IS 2 1/4 IN. WIDE

### BOX BOTTOM VIEW

1. FOR USE IN GREEN SPACE ONLY.
2. REFERENCE DFW PLASTICS, INC. DETAIL "DFW65C-14-AF1T SMALL".
3. DIMENSIONS ARE  $\pm 1/8$  IN. UNLESS NOTED OTHERWISE.
4. LID MATERIAL IS HDPE.
5. BODY MATERIAL IS LLDPE.
6. WALL THICKNESS IS 3/8 IN. MINIMUM
7. I.W.A. = INSIDE WORK AREA

### POLY WATER METER BOX AND LID FOR 1-1/2 IN. METER (DFW65C)

(NO SCALE)



## ENGINEERING DIVISION

**DISCLAIMER:** THE USE OF THIS STANDARD IS GOVERNED BY THE "TEXAS ENGINEERING PRACTICE ACT". NO WARRANTY OF ANY KIND IS MADE BY THE CITY OF WACO FOR ANY PURPOSE WHATSOEVER. THE CITY OF WACO ASSUMES NO RESPONSIBILITY FOR THE CONVERSION OF THIS STANDARD TO OTHER FORMATS OR FOR INCORRECT RESULTS OR DAMAGES RESULTING FROM ITS USE.

REVISIONS			
NO.	COMMENTS	BY	DATE
##	DESCRIPTION	FI	MM/DD/YYYY

DATE  
01/01/2024

W-15