

GENERAL NOTES:

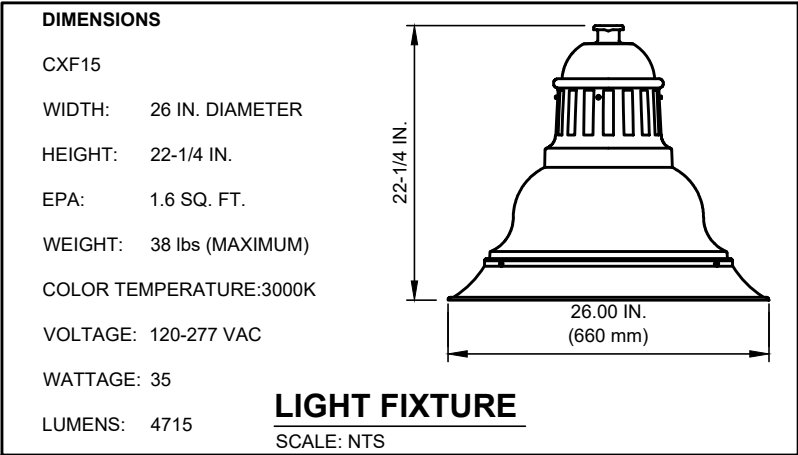
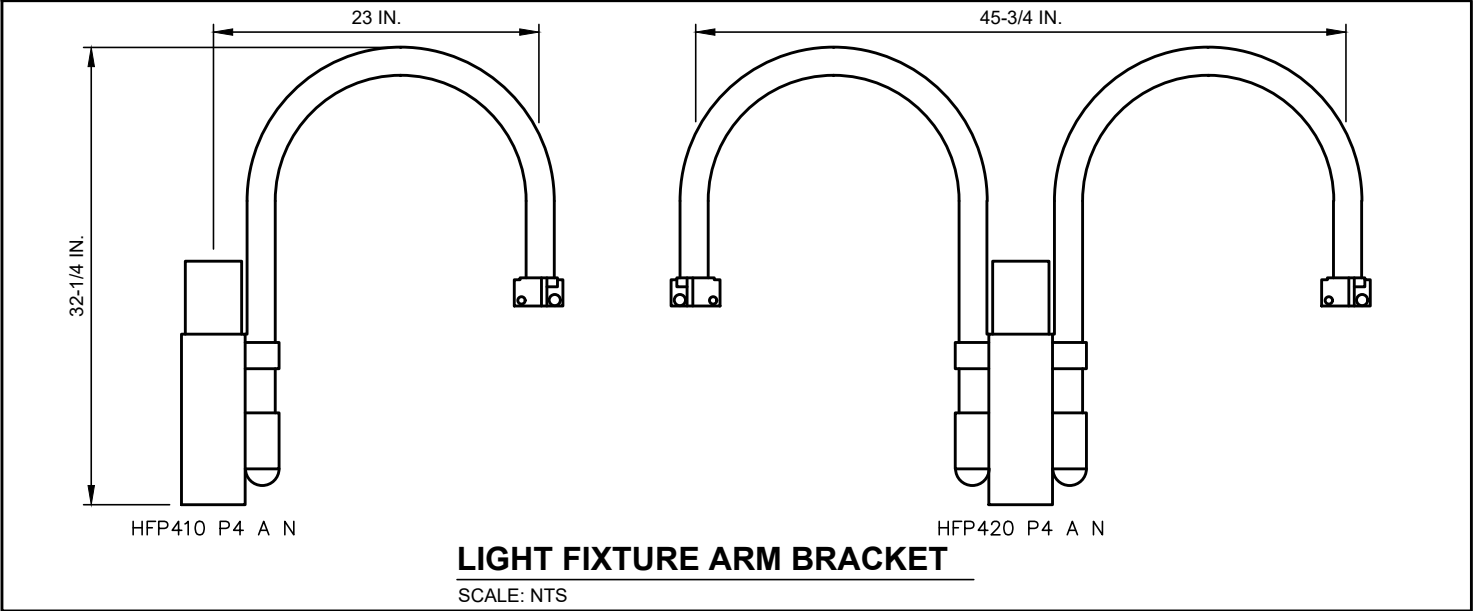
1.

PHOTOELECTRIC CONTROL:
THE PHOTOELECTRIC CELLS LOCATED ON THE ELECTRICAL SERVICE, SHALL BE TWIST PLUG IN TYPE PRECISION BRAND TO MATCH FIXTURE OR CONTRACTOR VOLTAGE.
2.

ELECTRICAL SERVICE EQUIPMENT:
ELECTRICAL SERVICE EQUIPMENT SHALL INCLUDE, BUT NOT BE LIMITED TO; METERED SERVICE/DISCONNECT OR CONTRACTOR ENCLOSURE. ALL ENCLOSURES HOUSING ELECTRICAL EQUIPMENT SHALL BE RAIN-TIGHT, INCLUDE A PADLOCK HANDLE, AND DESIGNED FOR OUTDOOR INSTALLATION IN ACCORDANCE WITH NEMA STANDARDS. THE LIGHTING INSTALLATIONS SHALL COMPLY WITH THE APPLICABLE PROVISIONS OF THE NATIONAL ELECTRICAL SAFETY CODE AND NATIONAL ELECTRIC MANUFACTURERS ASSOCIATION SPECIFICATIONS. A STANDALONE, PEDESTAL TYPE COMBINATION METERED SERVICE/DISCONNECT/CONTRACTOR CONTROL PANEL SHALL BE USED. THE PEDESTAL TYPE METER SERVICE MAY BE MOUNTED TO A CONCRETE PAD, ALTHOUGH A PRE CAST POLYMER PAD BASE IS RECOMMENDED. POWER REQUIREMENTS DESIRED SHOULD BE 120/240V SINGLE PHASE. IF NOT AVAILABLE, AN OPTIONAL SERVICE VOLTAGE MAY BE ACCEPTABLE IF APPROVED BY CITY STAFF. EACH SERVICE POINT SHALL INCLUDE INDIVIDUAL CIRCUIT BREAKERS AND PHOTOCCELL CONTROLLED BY CONTRACTOR(S), AND A HOA SWITCH FOR CONTROL OF THE LIGHTING CIRCUIT(S). METER SERVICES SHALL REQUIRE A NO FEE ELECTRICAL PERMIT AND BE INSPECTED BY CITY OF WACO INSPECTION SERVICES. ELECTRIC METER APPLICATION FOR SERVICE WILL BE MADE BY CITY STAFF. THE COLOR OF THE ELECTRICAL SERVICE EQUIPMENT SHALL BE MANUFACTURER'S STANDARD BLACK.

RECOMMENDED, ONCOR APPROVED, SERVICE PEDESTALS ARE MILBANK BRAND.
3.

WIRE:
ALL ELECTRICAL WIRE SHALL BE STRANDED COPPER CONDUCTOR. EARTH GROUND SHALL BE STRANDED COPPER CONDUCTOR WITH GREEN INSULATION. ALL WIRE SHALL BE OF ADEQUATE SIZE TO ACCOMMODATE LIGHTING LOAD. ALL SPLICES SHALL BE MADE INSIDE THE POLE. MINIMUM CONDUCTOR SIZE SHALL BE 10 AWG.



- LIGHTING NOTES:
1.


LIGHTING FIXTURE CATALOG NUMBER: HADCO BY SIGNIFY CXF15-32-G3-T-A-2-730-A-3-N OR APPROVED EQUAL.
2.

LIGHT FIXTURE ARM BRACKET CATALOG NUMBER: HADCO BY SIGNIFY HFP-410 (OR 420) P4 A N.

ZONE LIGHT FIXTURE & ARM BRACKET

TO BE USED IN DOWNTOWN IMPLEMENTATION PLAN ZONE WITH APPROVAL OF DIRECTOR OF PUBLIC WORKS.

SEE [T-SPL-2B](#) FOR ADDITIONAL DETAILS

 CITY OF WACO	ENGINEERING DIVISION		REVISIONS				DATE 01/01/2024	
	DISCLAIMER: THE USE OF THIS STANDARD IS GOVERNED BY THE "TEXAS ENGINEERING PRACTICE ACT". NO WARRANTY OF ANY KIND IS MADE BY THE CITY OF WACO FOR ANY PURPOSE WHATSOEVER. THE CITY OF WACO ASSUMES NO RESPONSIBILITY FOR THE CONVERSION OF THIS STANDARD TO OTHER FORMATS OR FOR INCORRECT RESULTS OR DAMAGES RESULTING FROM ITS USE.		NO.	COMMENTS	BY	DATE	T-SPL-2A	
			##	DESCRIPTION	FL	MM/DD/YYYY		