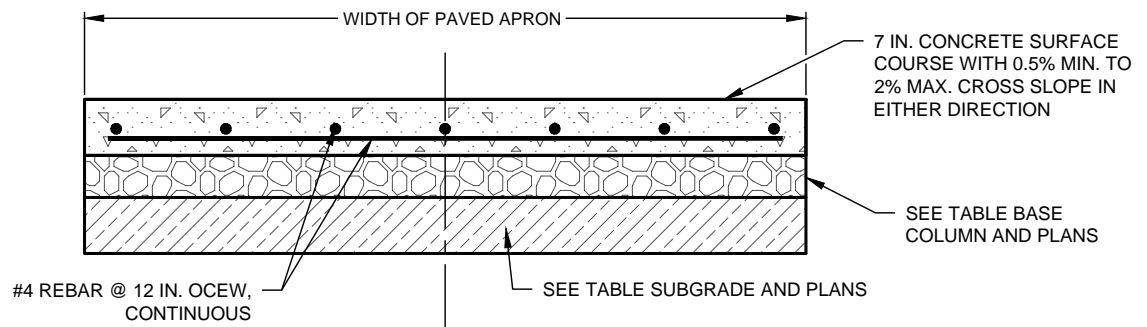


NOTES:

1. DOOR STOPS SHALL BE CONSTRUCTED OF $\frac{3}{4}$ IN. SOLID STEEL ROD.
2. $1\frac{1}{2}$ IN. DIAMETER SCHEDULE 40 GALVANIZED STEEL PIPE SHALL BE PLACED AT THE DOORS CLOSED AND OPEN POSITIONS.
3. THE RODS SHALL PENETRATE THE SURFACE $2\frac{1}{2}$ IN.
4. DOORS SHALL REMAIN OPEN AT A 30° ANGLE WITH A $\frac{3}{4}$ IN. SOLID STEEL ROD INTO A $1\frac{1}{2}$ IN. DIAMETER SCHEDULE 40 GALVANIZED STEEL PIPE TO HOLD DOOR OPEN.

DOOR STOP DETAILS




RIGID PAVEMENT SECTION (P.C. CONCRETE)			
P.I. OF SUBGRADE	P.C. CONCRETE	BASE	SUBGRADE
P.I. 20	7 IN.	4 IN. CTB ^{1,2}	COMPACTED ³
20 < P.I. < 40	7 IN.	-	6 IN. LSS
P.I. 40	7 IN.	-	8 IN. LSS

NOTES:

1. MAY SUBSTITUTE: 4 IN. RECYCLED CRUSHED (TxDOT STANDARD SPECIFICATIONS FOR CONSTRUCTION ITEM 247 FLEXIBLE BASE TYPE D GRADE 1-2 WITH MINIMUM P.I. OF FOUR).
2. BOND BREAKER CONSISTING OF 10 MIL POLYETHYLENE BETWEEN CTB AND P.C. CONCRETE PAVEMENT.
3. COMPACTED TO 95% DENSITY OF MAXIMUM DENSITY PER TEST PROCEDURE TEX-114-E.
4. ANY DESIGNS THAT PROPOSE TO EXCEED 2% CROSS SLOPE SHALL REQUIRE THE APPROVAL OF THE DIRECTOR OF SOLID WASTE DEPARTMENT.

PAD AND APRON PAVEMENT SECTION DETAILS

WASTE CONTAINER PAD AND APRON DETAILS
(NO SCALE)

	ENGINEERING DIVISION	REVISIONS			DATE 01/01/2024 SDW-5	
		NO.	COMMENTS	BY		DATE
DISCLAIMER: THE USE OF THIS STANDARD IS GOVERNED BY THE "TEXAS ENGINEERING PRACTICE ACT". NO WARRANTY OF ANY KIND IS MADE BY THE CITY OF WACO FOR ANY PURPOSE WHATSOEVER. THE CITY OF WACO ASSUMES NO RESPONSIBILITY FOR THE CONVERSION OF THIS STANDARD TO OTHER FORMATS OR FOR INCORRECT RESULTS OR DAMAGES RESULTING FROM ITS USE.		##	DESCRIPTION	FL	MM/DD/YYYY	