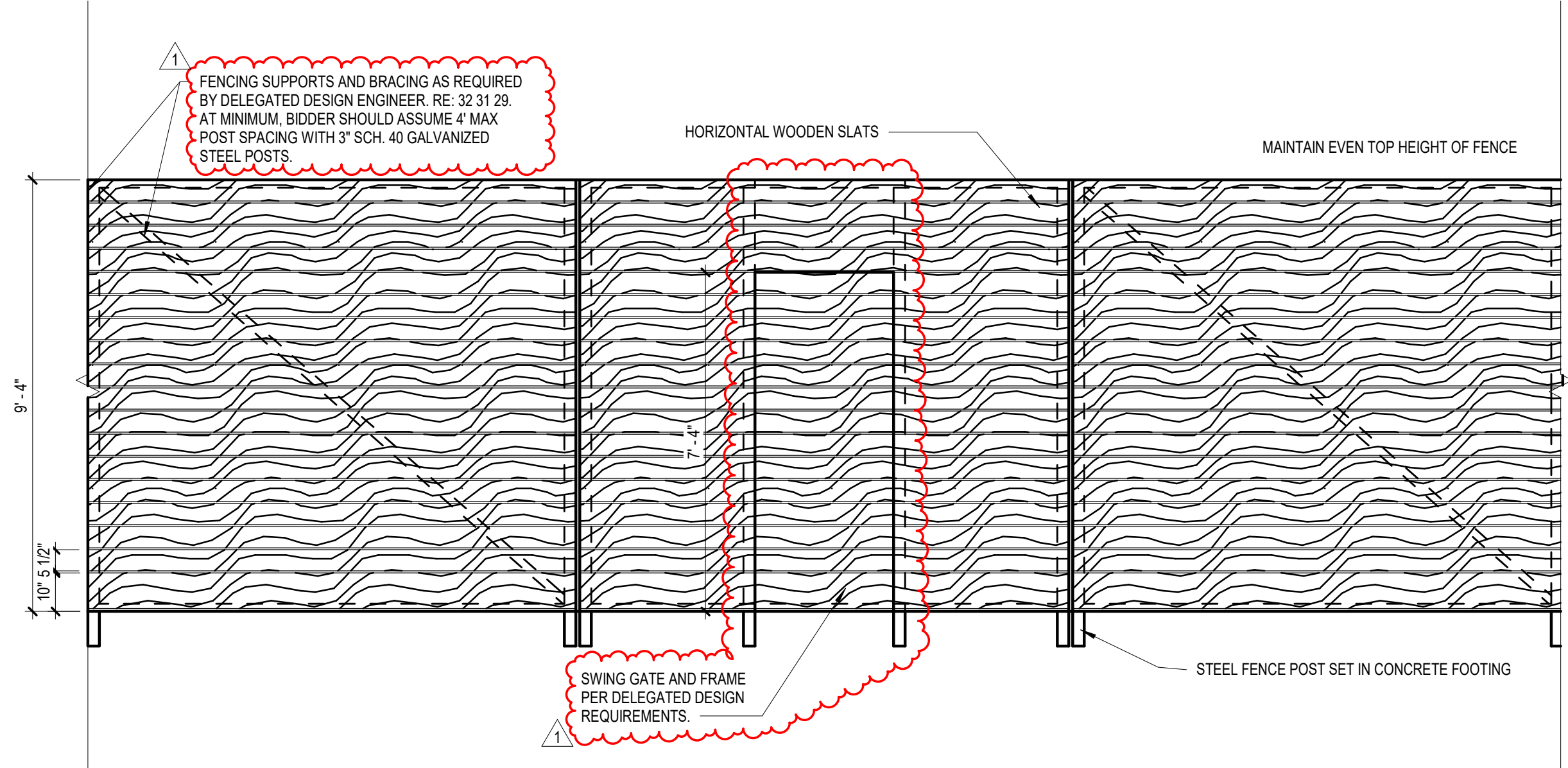


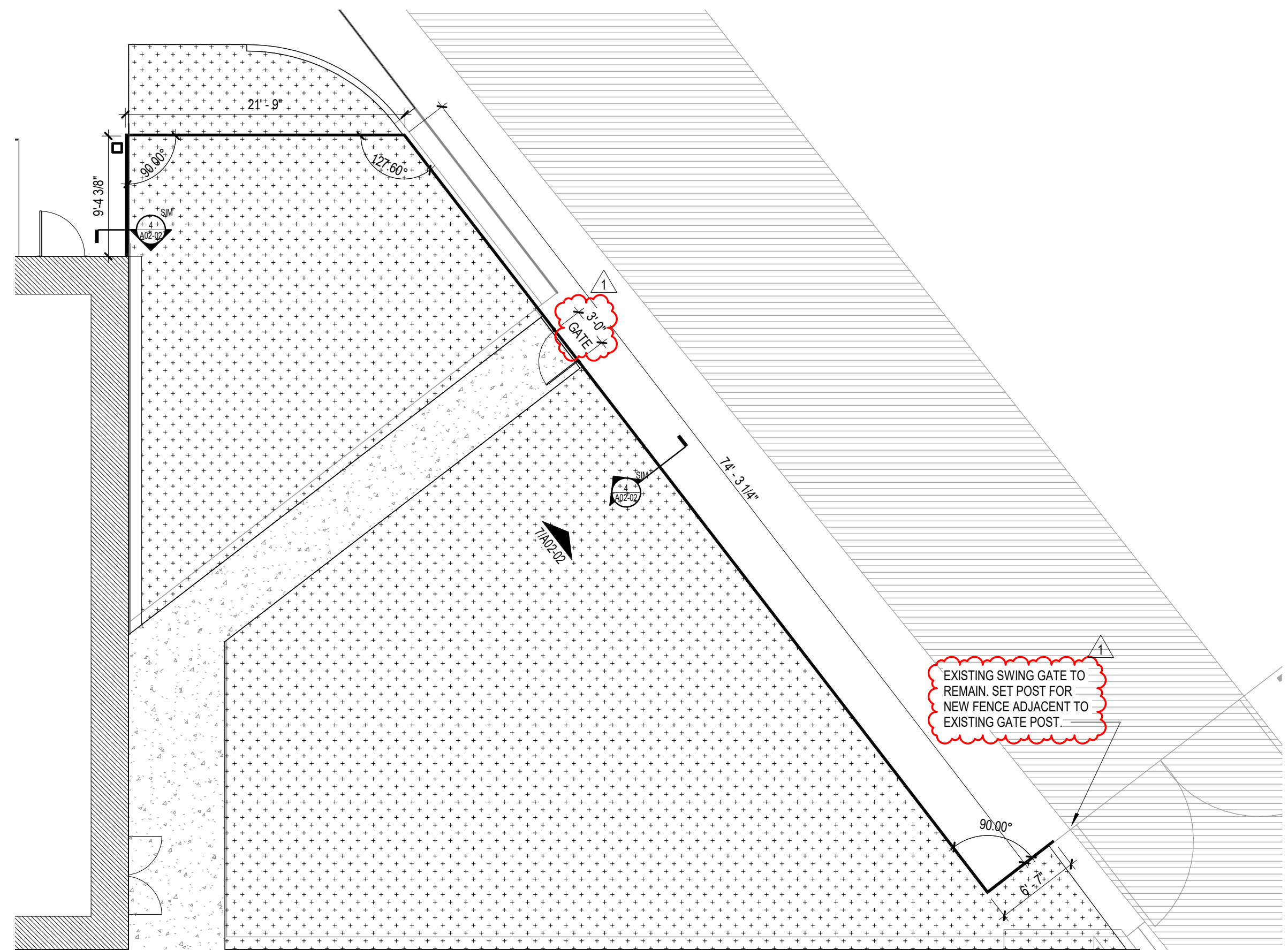
8 WEST FENCE ELEVATION

3/8" = 1'-0"



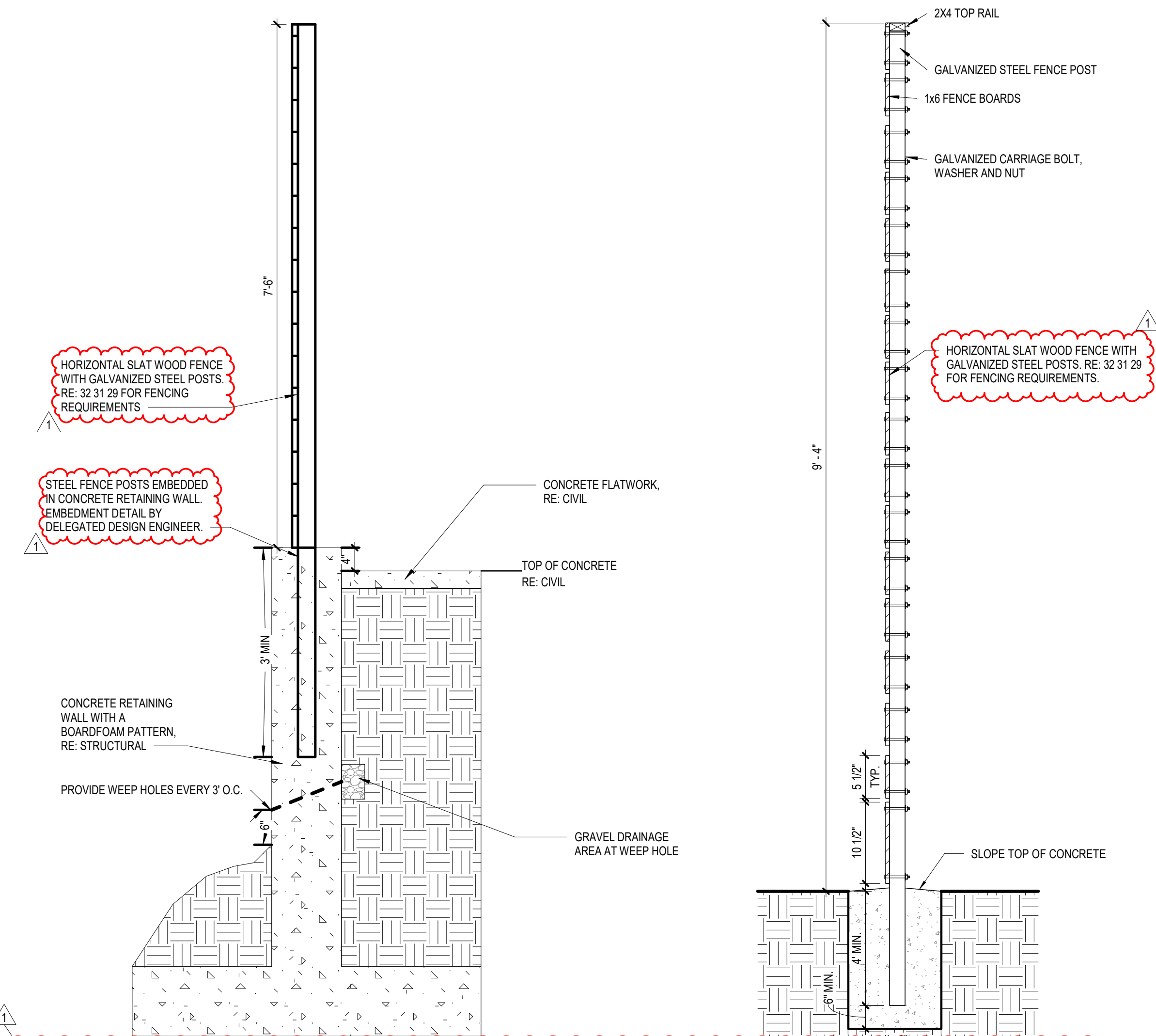
7 EAST FENCE ELEVATION

3/8" = 1'-0"



5 EAST FENCE ENLARGED PLAN

1/8" = 1'-0"



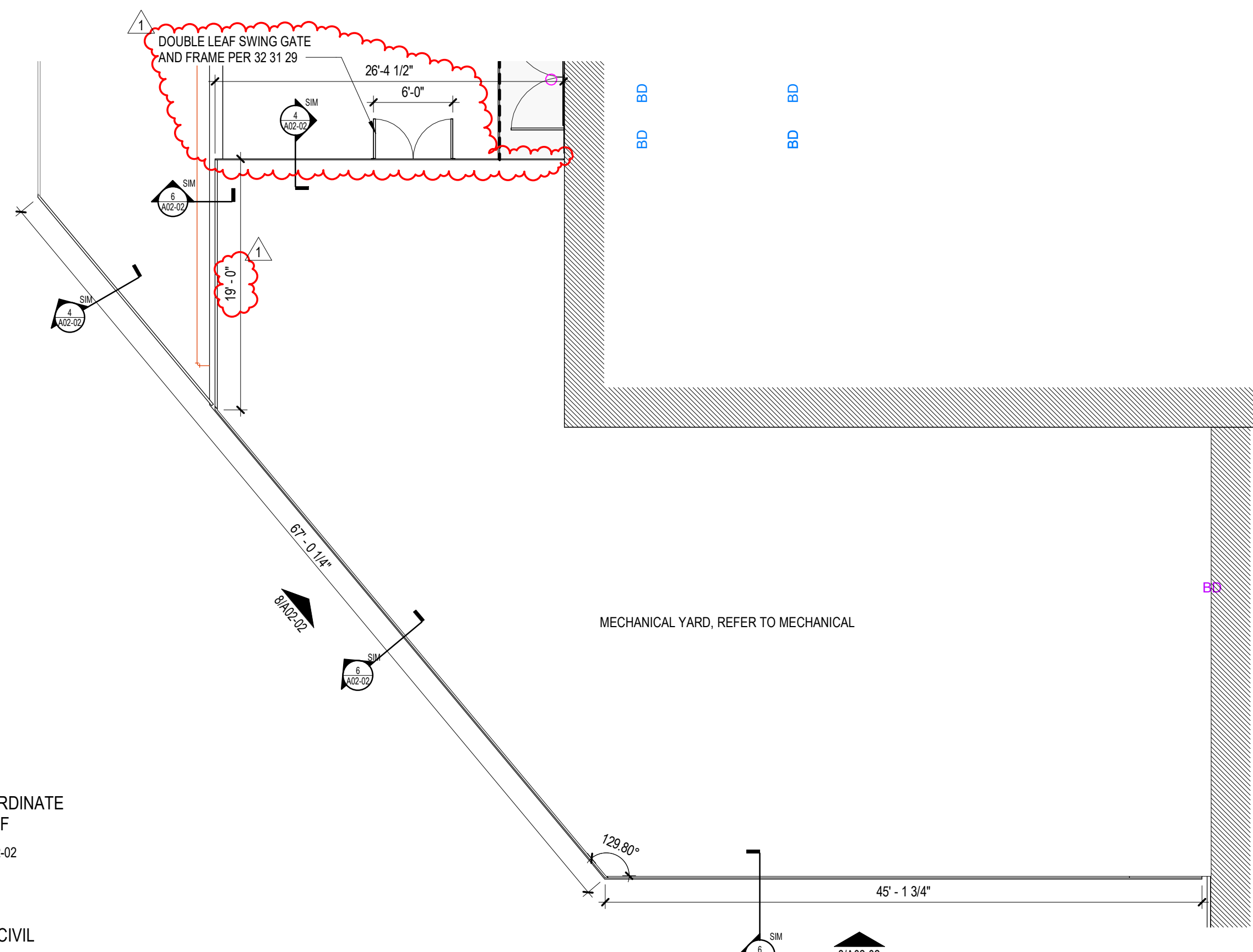
WOOD FENCE @ CONCRETE RETAINING

WALL

3/4" = 1'-0"

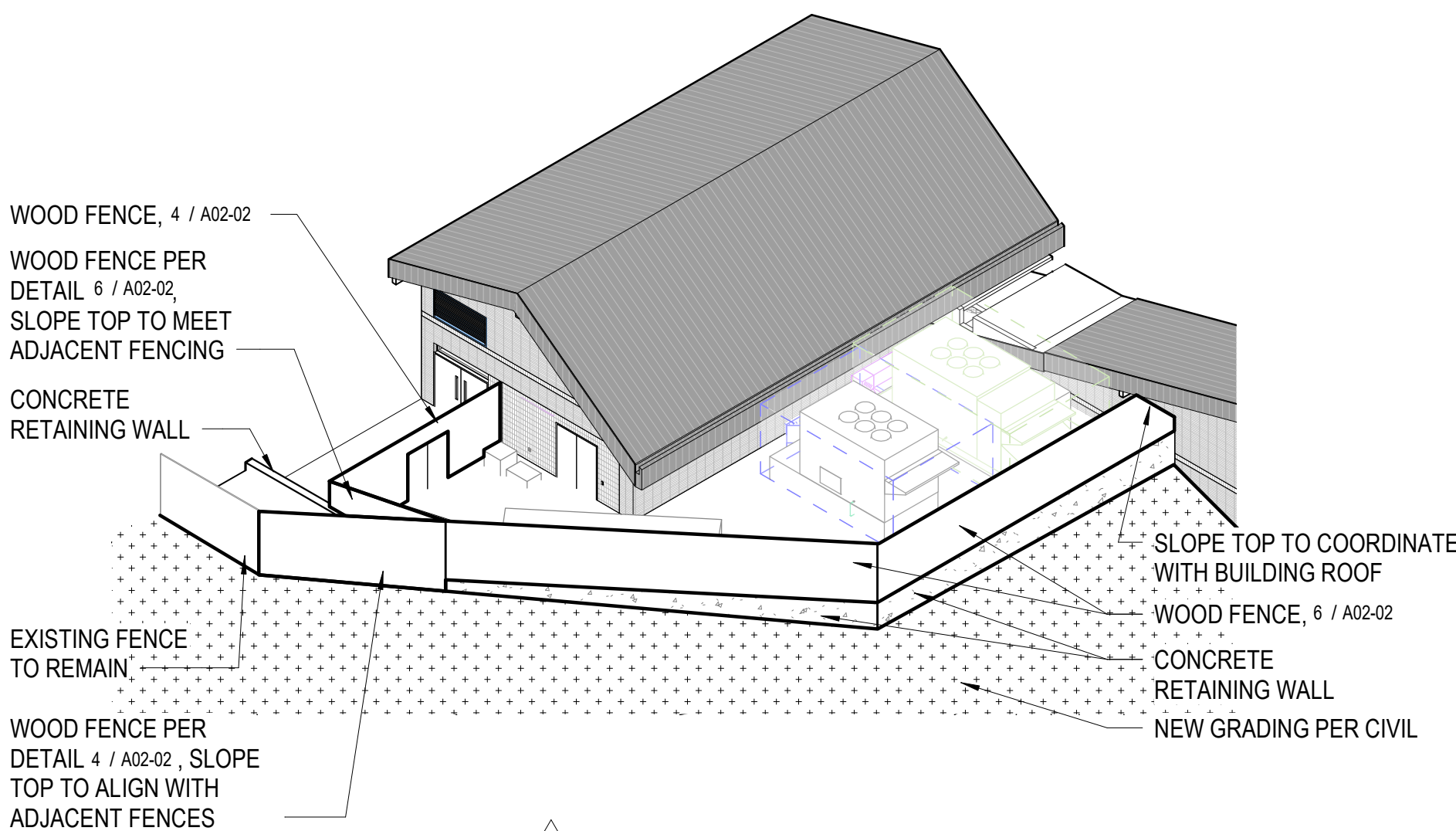
WOOD FENCE @ GRADE

1" = 1'-0"

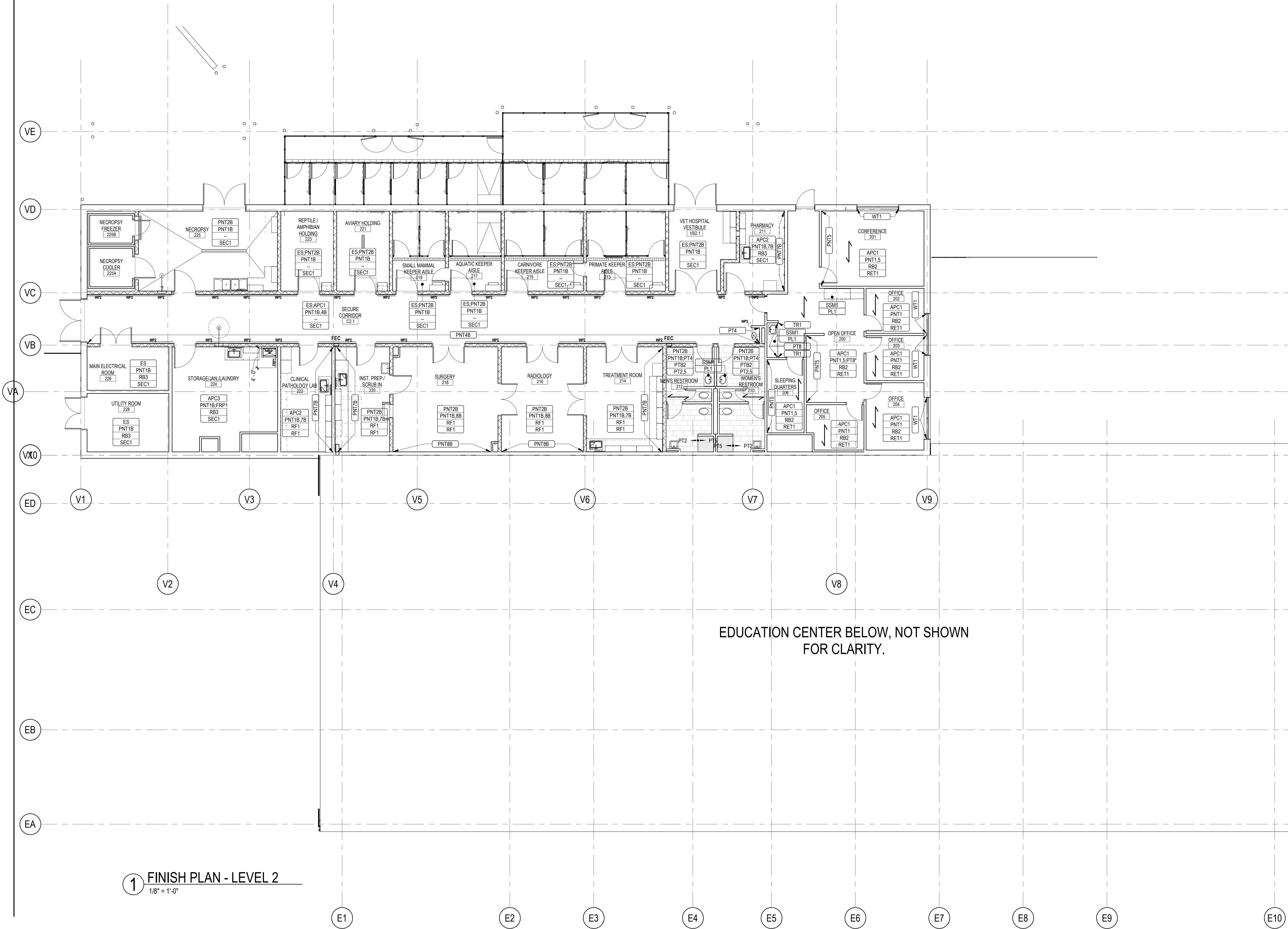


1 WEST FENCE ENLARGED PLAN

1/8" = 1'-0"



2 WEST FENCE AXON



1 FINISH PLAN - LEVEL 2
1/8" = 1'-0"

INTERIOR FINISH PLAN GENERAL NOTES

1. REFER TO INTERIOR FINISH LEGEND A64-00 FOR FINISH MANUFACTURER AND COLOR INFORMATION.
2. ADJUST FLOOR TILE IN FIELD AREA TO ACCOMMODATE PATTERN. FLOORING MATERIAL THAT IS 6" OR LARGER IS TO RECEIVE A CUT THAT IS NO LESS 1/3 OF THE MATERIAL.
3. REFERENCE ENLARGED PLANS, INTERIOR ELEVATIONS, REFLECTED CEILING PLANS, AND INTERIOR DETAILS FOR ADDITIONAL INFORMATION.

INTERIOR FINISH PLAN LEGEND

ROOM FINISH TAG

XXX	CEILING FINISH
XXX	WALL FINISH
XXX	WALL BASE FINISH
XXX	FLOOR FINISH

MILLWORK FINISH TAG

XXX	COUNTERTOP
XXX	CABINET FRONTS

- ★ DENOTES MULTIPLE FINISHES - REFER TO REFLECTED CEILING PLANS, ENLARGED PLANS AND/OR ELEVATIONS FOR INFORMATION.

XXX	FINISH TAG
-----	------------

XXX — XXX MATERIAL TRANSITION TAG

← MATERIAL PATTERN DIRECTION

WPX WALL PROTECTION TAG. REFER TO A64-00 FOR MANUFACTURER AND PRODUCT INFORMATION.

WP CORNER GUARD TAG. REFER TO A64-00 FOR MANUFACTURER AND PRODUCT INFORMATION.

INTERIOR FINISH PLAN NOTES BY NUMBER

Perkins&Will

1001 McKinney
Suite 1300
Houston, TX 77002
1713.366.4000
www.perkinswill.com

CONSULTANTS

CIVIL
WALKER PARTNERS, LLC
823 WASHINGTON AVENUE, SUITE 100,
WACO, TEXAS 76701

ENSIGHT HAYNES WHALEY
12803 SW FREEWAY, SUITE 603,
STAFFORD, TEXAS 77477

MEP
AFFILIATED ENGINEERS, INC.
ONE GREENWAY PLAZA, SUITE 150,
HOUSTON, TEXAS 77046

LANDSCAPING

OWNER
CITY OF WACO
P.O. BOX 2570, WACO, TX 76702



11.09.2022

PROJECT



CAMERON PARK ZOO:
EDUCATION CENTER &
VET HOSPITAL

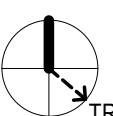
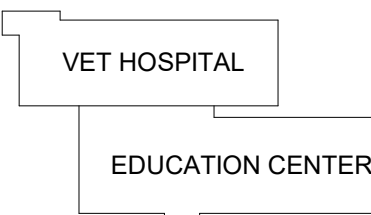
1701 N. 4TH STREET
WACO, TX 76707



CITY OF WACO
CAMERON PARK ZOO

P.O. BOX 2570, WACO, TX
76702

KEYPLAN



TRUE NORTH ISSUE CHART

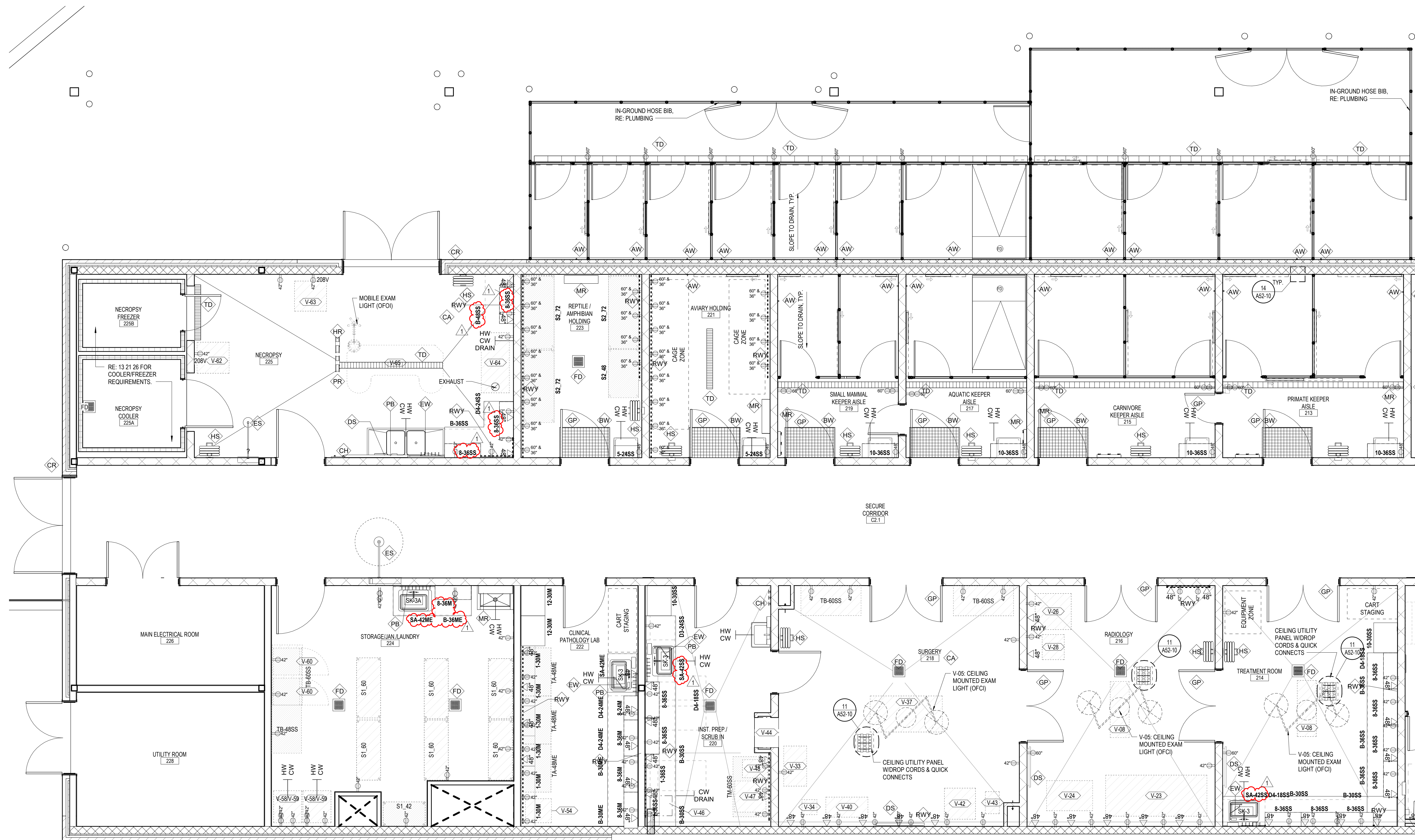
1	ADDENDUM 2	11/9/2022
DATE	DATE	DATE
Job Number	185236.000	

TITLE

FINISH PLAN - VET
HOSPITAL

SHEET NUMBER

A13-02



1 EQUIPMENT, CASEWORK & UTILITY PLAN - VET HOSPITAL - WEST
1/4" = 1'-0"

EQUIPMENT PLAN GENERAL NOTES

1. THE CONTRACTOR SHALL VERIFY AND COORDINATE CLEAR DIMENSIONS REQUIRED FOR OWNER FURNISHED EQUIPMENT THAT ARE LOCATED WITHIN OR ADJACENT TO BUILT-IN CABINETS.
2. UTILITIES SHOWN ON THESE PLANS ARE FOR DIMENSIONAL REFERENCE AND EQUIPMENT COORDINATION PURPOSES. REFER TO ELECTRICAL, PLUMBING, AND SECURITY DRAWINGS FOR DESIGN OF SYSTEM. NOT ALL RECEPTACLES ARE SHOWN ON THESE DRAWINGS. REFER TO ELECTRICAL AND TELECOM DRAWINGS FOR ADDITIONAL REQUIREMENTS.
3. CONTRACTOR SHALL SUPPLY BLOCKING FOR MOUNTING OF EQUIPMENT UNLESS MOUNTING SUPPORT IS OTHERWISE FURNISHED AS PART OF THE EQUIPMENT.
4. CONTRACTOR SHALL COORDINATE WITH THE OWNER ON THE DELIVERY AND INSTALLATION OF OWNER FURNISHED EQUIPMENT.
5. REFER TO A43 SERIES FOR MISCELLANEOUS EQUIPMENT MOUNTING HEIGHTS.
6. UTILITY ROUTING TO BE CONCEALED IN-WALL AND/OR ABOVE CEILING. EXPOSED CONDUIT NOT PERMITTED UNLESS NOTED OTHERWISE.

EQUIPMENT PLAN LEGEND

- OWNER FURNISHED EQUIPMENT DESIGNATION. REFER TO OWNER EQUIPMENT MANUAL FOR SPECIFICATION.
 TOILET ACCESSORY TAG. REFER TO A43-01 FOR LEGEND.
 OWNER FURNISHED OWNER INSTALLED CASEWORK
 OWNER FURNISHED OWNER INSTALLED EQUIPMENT ITEM
 ELECTRICAL RECEPTACLE, RE: ELECTRICAL DRAWINGS FOR ADDITIONAL REQUIREMENTS
 MOUNTING HEIGHT A.F.F.

EQUIPMENT PLAN NOTES BY NUMBER

- <<< Indicates Sheet Keynote on Plan

Perkins&Will

1001 McKinney
Suite 1300
Houston, TX 77002
1713.366.4000
www.perkinswill.com

CONSULTANTS

CIVIL
WALKER PARTNERS, LLC
823 WASHINGTON AVENUE, SUITE 100,
WACO, TEXAS 76701
STRUCTURAL

ENSIGHT HAYNES WHALEY
12603 SW FREEWAY, SUITE 603,
STAFFORD, TEXAS 77477
MEP

AFFILIATED ENGINEERS, INC.
ONE GREENWAY PLAZA, SUITE 150,
HOUSTON, TEXAS 77046
LANDSCAPING

OWNER

CITY OF WACO

P.O. BOX 2570, WACO, TX 76702



PROJECT



CAMERON PARK ZOO:
EDUCATION CENTER &
VET HOSPITAL

1701 N. 4TH STREET
WACO, TX 76707



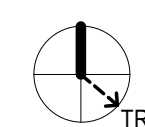
CITY OF WACO
CAMERON PARK ZOO

P.O. BOX 2570, WACO, TX
76702

KEYPLAN

VET HOSPITAL

EDUCATION CENTER



TRUE NORTH ISSUE CHART

1	ADDENDUM 2	11/9/2022
DATE	DATE	DATE
Job Number	185236.000	

EQ, CASEWORK &
UTILITY
COORDINATION PLAN
- VET HOSPITAL -
WEST
SHEET NUMBER

A17-04

ANIMAL CAGING
GENERAL NOTES

1. THE CONTRACTOR SHALL VERIFY AND COORDINATE CLEAR DIMENSIONS REQUIRED FOR OWNER FURNISHED CRATES AND CAGES THAT WILL BE AFFIXED TO ANIMAL CAGING PRIOR TO CAGING FABRICATION.
2. REFER TO EQ, CASEWORK & UTILITY COORDINATION PLANS FOR UTILITY REQUIREMENTS.
3. OPERATION OF CAGING SLIDES TO BE COORDINATED WITH OWNER STANDARDS PRIOR TO SHOP DRAWING PHASE. DRAWINGS INDICATE DESIGN INTENT.
4. FINAL DIMENSIONS, SIZES AND CONFIGURATION OF SLIDE AND GATE OPERATION AND LOCKING TO BE COORDINATED WITH OWNER PRIOR TO SHOP DRAWINGS.
5. AFTER ERECTION AND FINAL FINISHING OF FRAMING MEMBERS PROVIDE COLD GALVANIZING PAINT FINISH ON ALL SURFACES OF CAGE FRAMING (REGARDLESS OF CONDITION OF HOT DIP GALVANIZING FINISH) TO PROVIDE A CONSISTENT FINISH THROUGHOUT.
6. AFTER ERECTION GRIND ALL WELDS AND CUT STEEL COMPONENTS TO BE SMOOTH AND FREE OF BURRS AND SHARP EDGES. ENSURE ALL COMPONENTS ARE FREE FROM BURRS AND SHARP EDGES AFTER FABRICATION AND GALVANIZING. MAKE EXPOSED JOINTS BUTT TIGHT, FLUSH AND HAIRLINE. EASE EXPOSED EDGES TO SMALL UNIFORM RADIUS. NOTIFY OWNER AND ARCHITECT ONCE COMPLETE FOR FINAL REVIEW AND APPROVAL. UNSATISFACTORY CONDITIONS MUST BE CORRECTED PRIOR TO FINAL APPROVAL.
7. REFER TO A17-05 FOR CAGING DOOR SCHEDULE AND TYPES
8. REFER TO A52-20 SERIES FOR CAGING DETAILS
9. REFER TO A10 / A12 SERIES FOR ITEMS NOT NOTED ON THESE PLANS

ANIMAL CAGING LEGEND

● [AC-01] CAGING TAG. REFER TO CAGING SCHEDULE FOR TYPES

ANIMAL CAGING SCHEDULE

AC-01
LOCATION: INTERTX CARNIVORE/PRIMATE HOLDING & EXT LARGE KEEPER CORRIDOR
SIZE: 1" x 1" x 1/4" DIA
MATERIAL: GALVANIZED STEEL LOCK CRIMP WIRE MESH

AC-02
LOCATION: TYPICAL VET HOSPITAL HOLDING
SIZE: 2" x 2" x 1/8" DIA
MATERIAL: GALVANIZED STEEL LOCK CRIMP WIRE MESH

AC-03
LOCATION: VET HOSPITAL AVIARY CEILING
SIZE: 2" x 2" x 1/16" DIA
MATERIAL: STAINLESS STEEL WOVEN WIRE NETTING

AC-04
LOCATION: INTERTX ANIMAL AMBASSADOR HOLDING
SIZE: 1" x 1" x 1/8" GAUGE
MATERIAL: ALUMINUM WIRE CAGING, BLACK FINISH

AC-05
LOCATION: TYPICAL EXTERIOR VET HOSPITAL KEEPER CORRIDOR
MATERIAL: 9 GAUGE CHAINLINK, GALVANIZED

ANIMAL CAGING
NOTES BY NUMBER

17.1 <<< Indicates Sheet Keynote on Plan
17.1 WHEEL ASSEMBLY FOR S-3 SLIDE, RE: A52-20 SERIES FOR DETAILS

Perkins&Will

1001 McKinney
Suite 1300
Houston, TX 77002
1713.366.4000
www.perkinswill.com

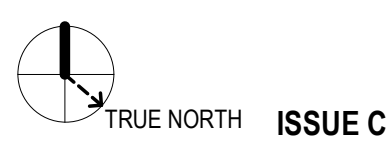
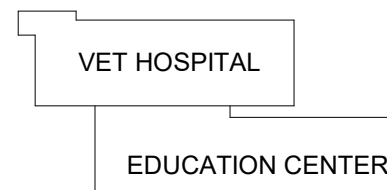
CONSULTANTS

CIVIL
WALKER PARTNERS, LLC
823 WASHINGTON AVENUE, SUITE 100,
WACO, TEXAS 76701
STRUCTURAL
ENSIGHT HAYNES WHALEY
12803 SW FREEWAY, SUITE 603,
STAFFORD, TEXAS 77477
MEP
AFFILIATED ENGINEERS, INC.
ONE GREENWAY PLAZA, SUITE 150,
HOUSTON, TEXAS 77046
LANDSCAPING

PROJECT

CAMERON PARK ZOO:
EDUCATION CENTER &
VET HOSPITAL1701 N. 4TH STREET
WACO, TX 76707CITY OF WACO
CAMERON PARK ZOOP.O. BOX 2570, WACO, TX
76702

KEYPLAN



ISSUE CHART

1	ADDENDUM 2	11/9/2022
DATE	DATE	DATE
Job Number	185236.000	
		TITLE

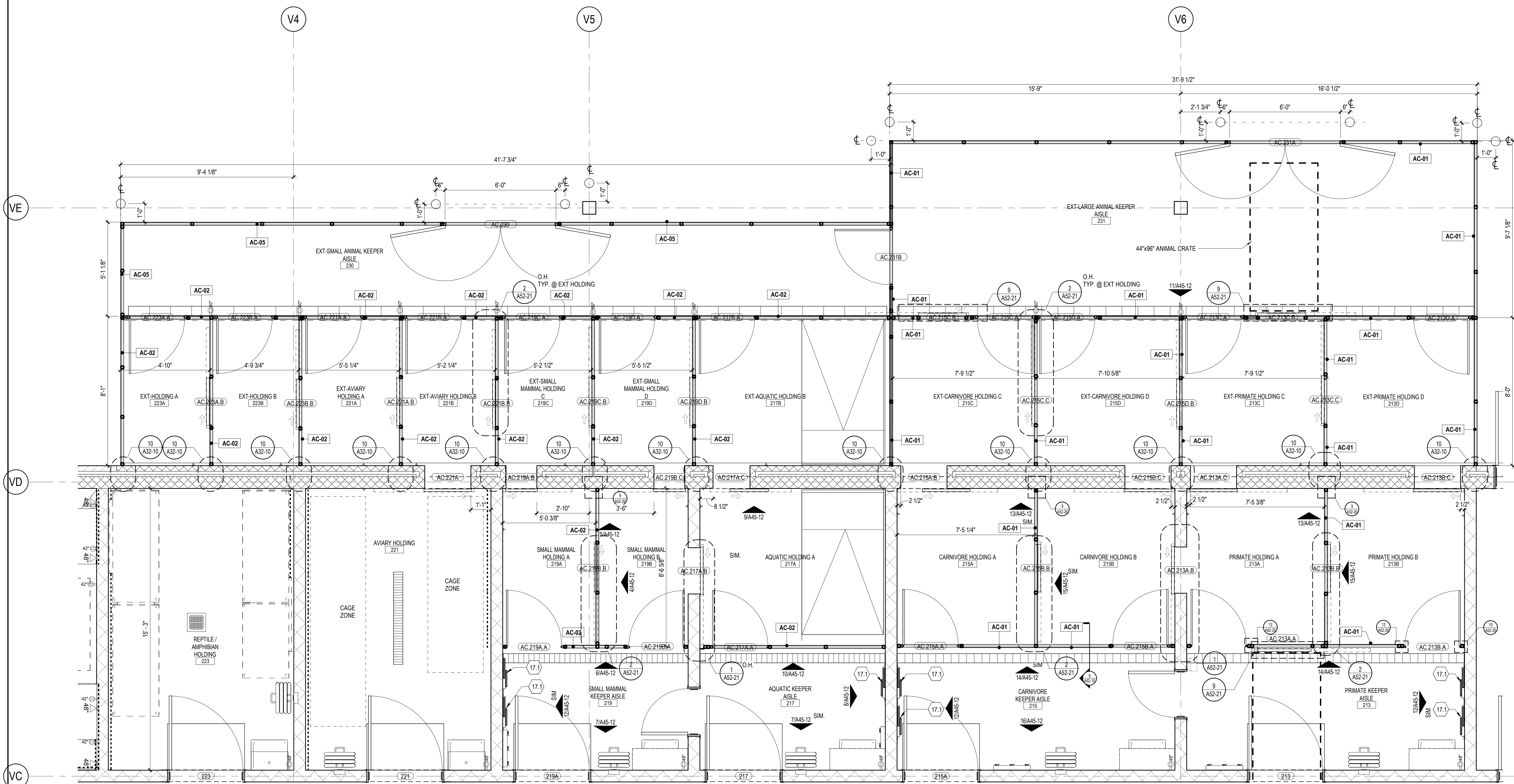
CAGING PLANS - VET
HOSPITAL

SHEET NUMBER

A17-06

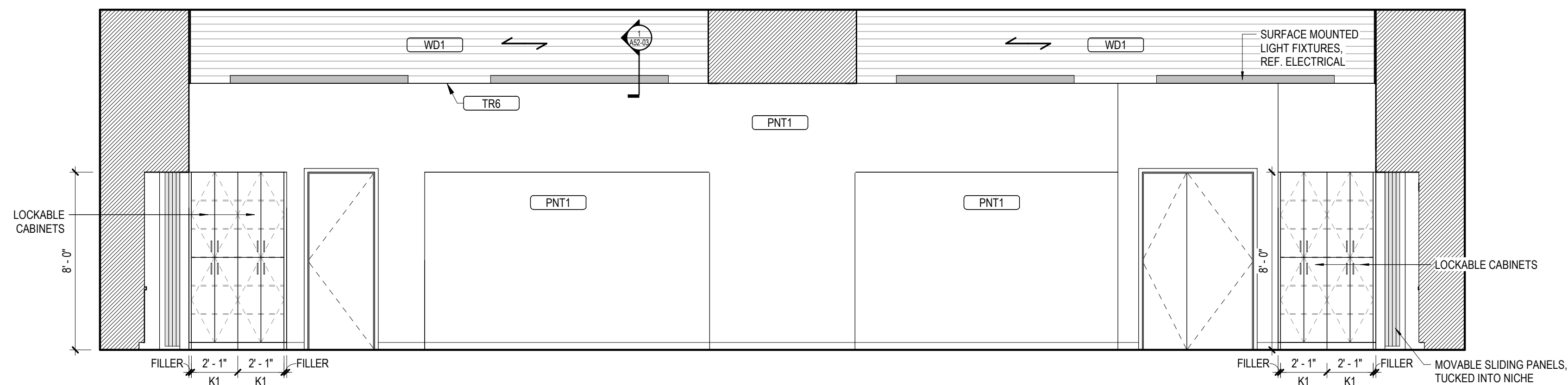
© 2020 Perkins and Will

ISSUE FOR BID & PERMIT 04/01/2022

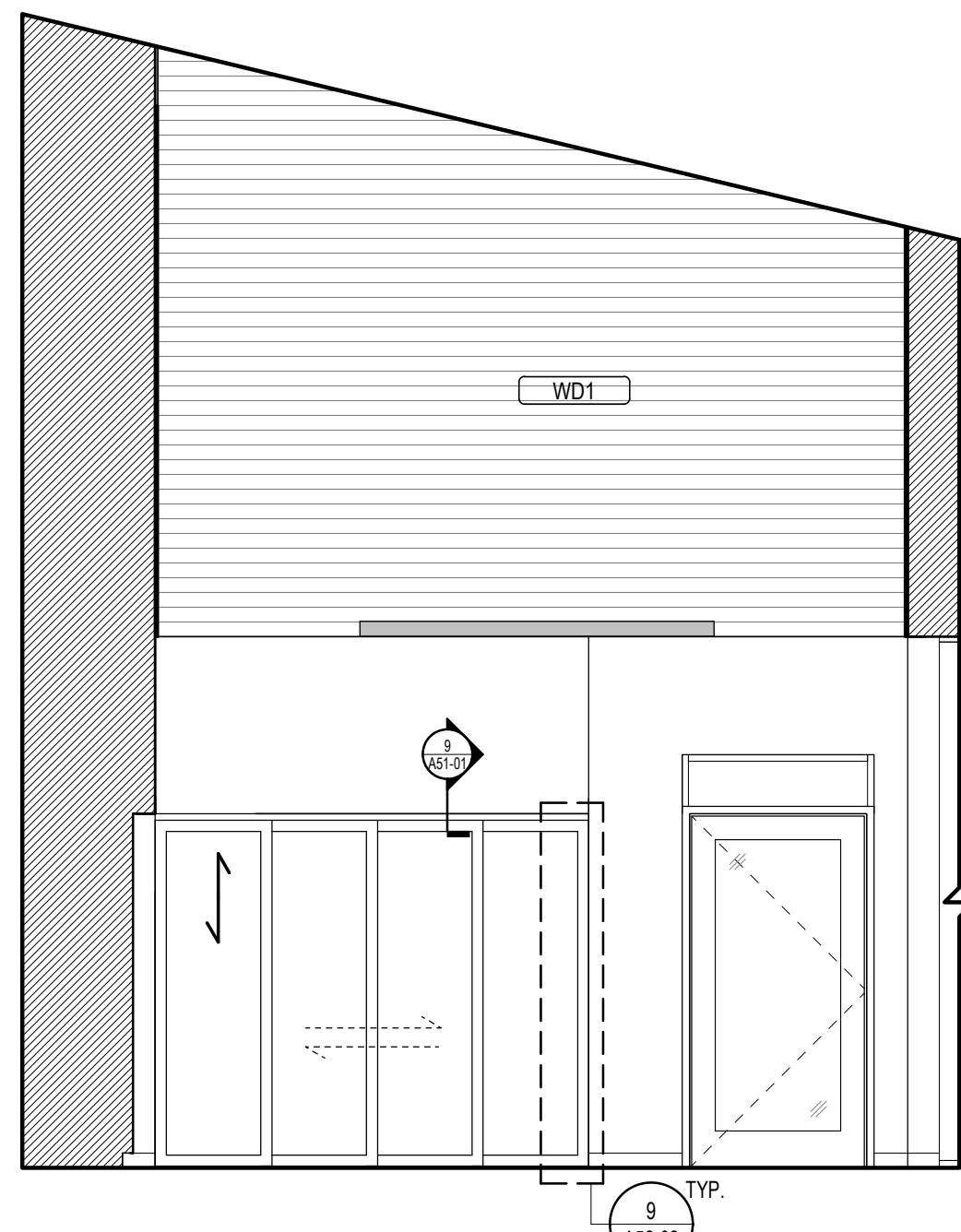


1 CAGING PLANS - VET HOSPITAL ANIMAL HOLDING

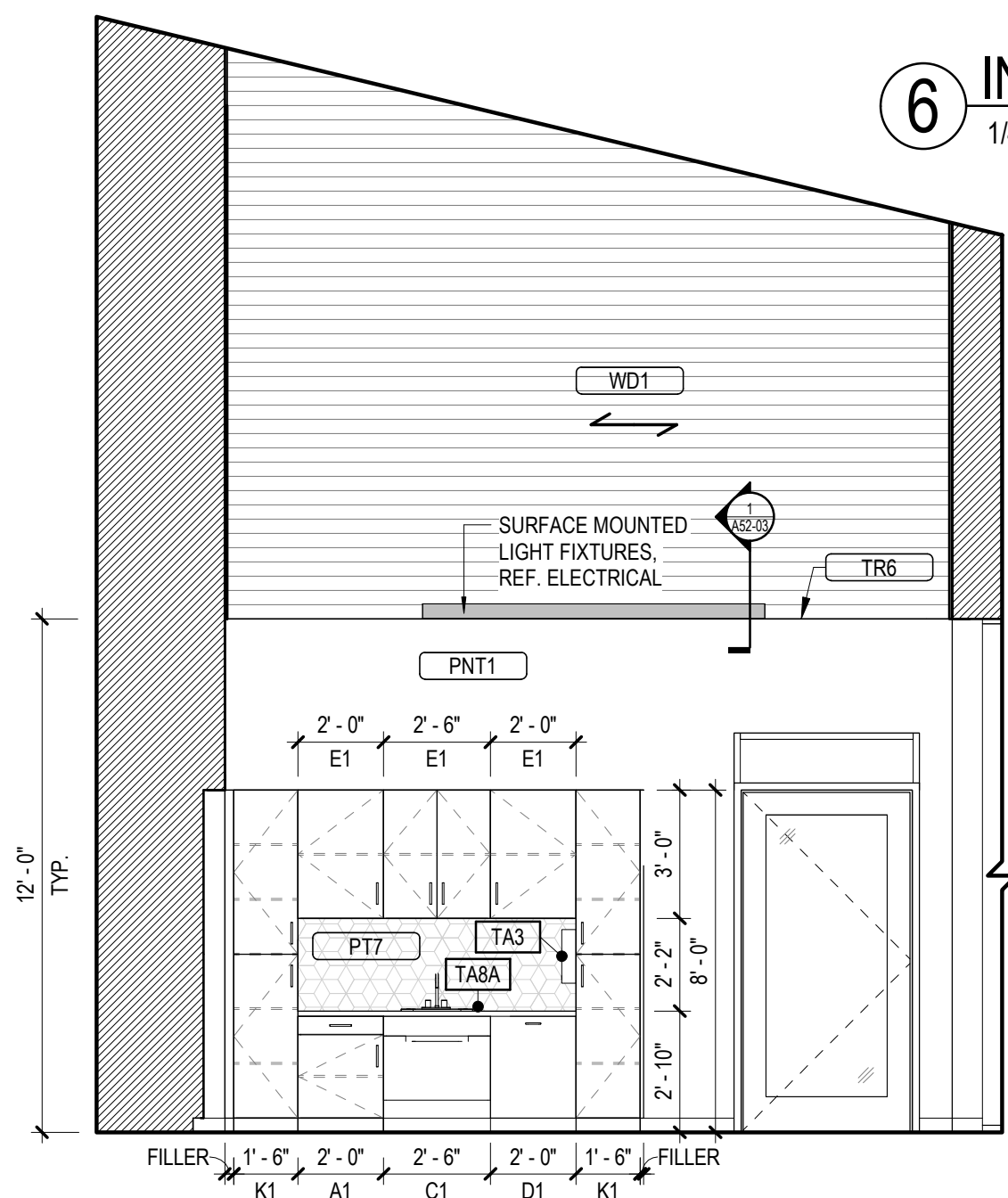
3/8" = 1'-0"



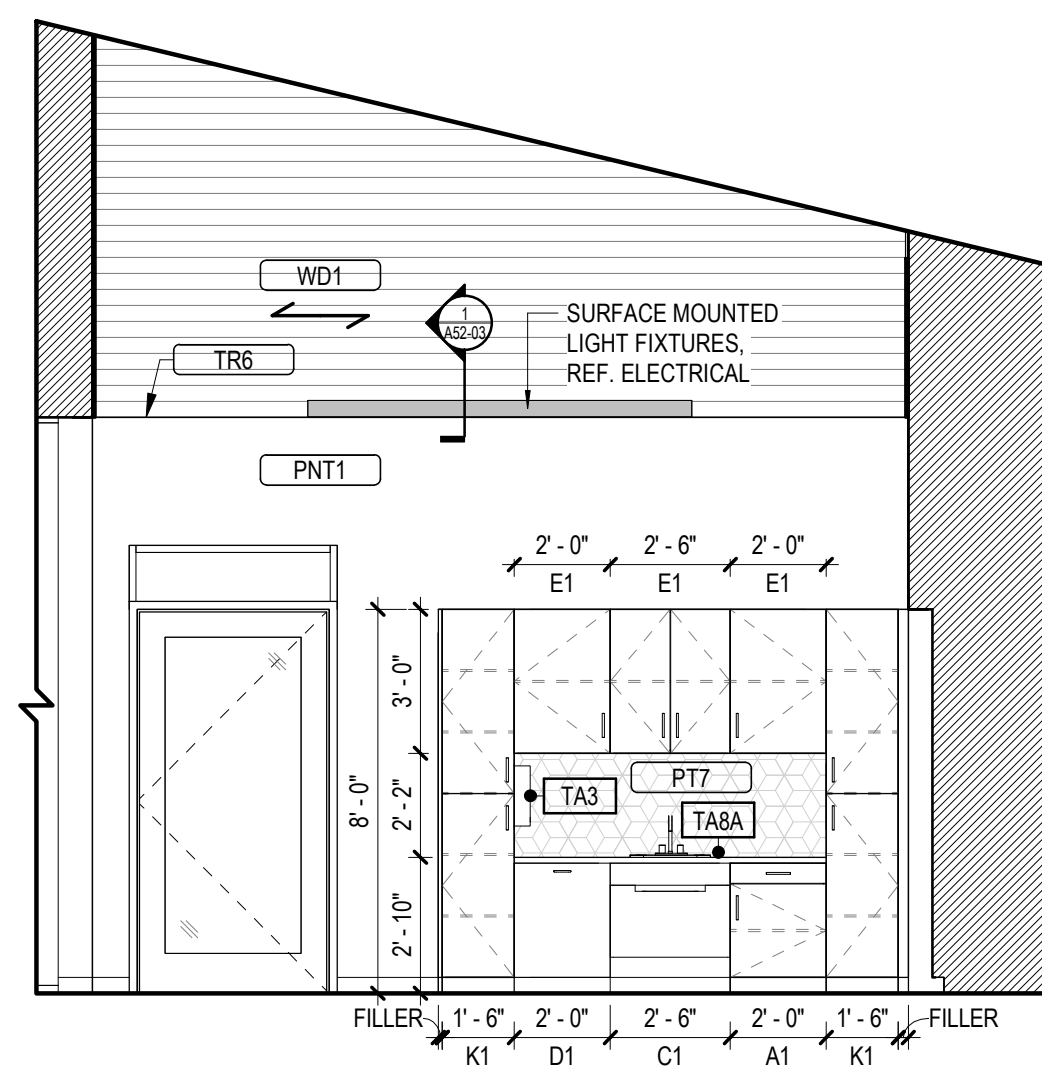
7 INT ELEVATION - CLASSROOM - NORTH
1/4" = 1'-0"



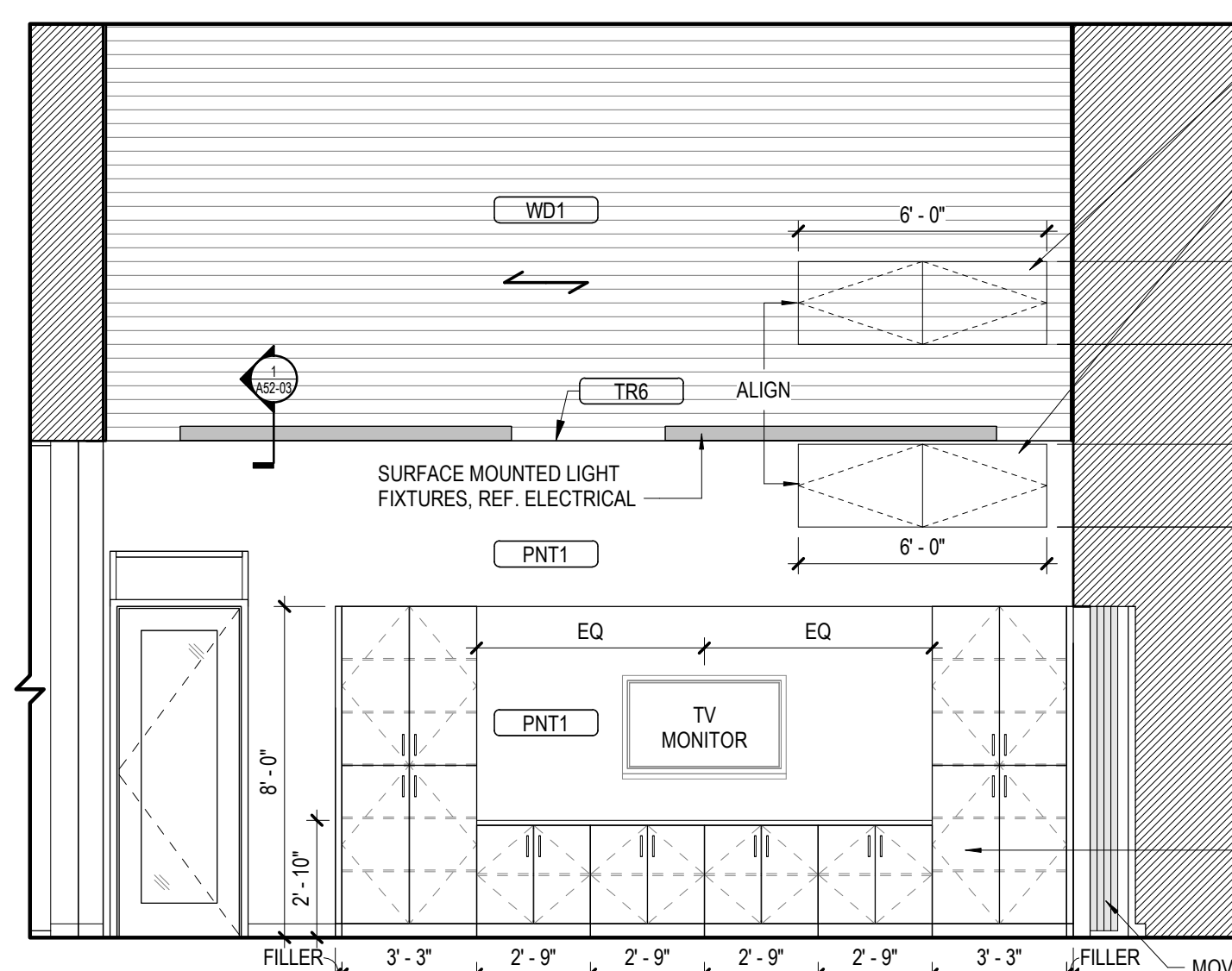
6 INT ELEVATION - MILLWORK CONCEALED
1/4" = 1'-0"



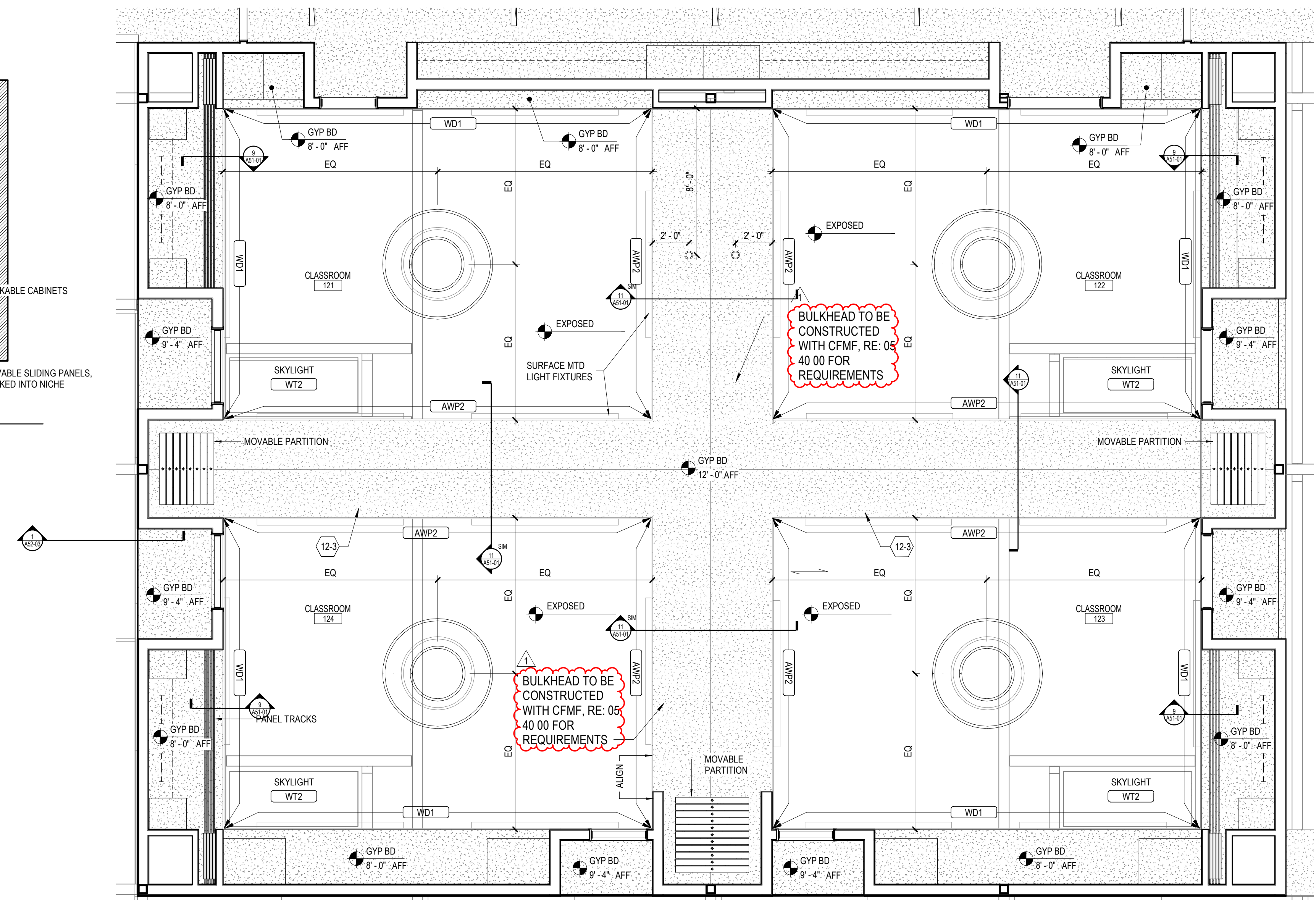
5 INT ELEVATION - OPEN MILLWORK - SOUTH CLASSROOMS
1/4" = 1'-0"



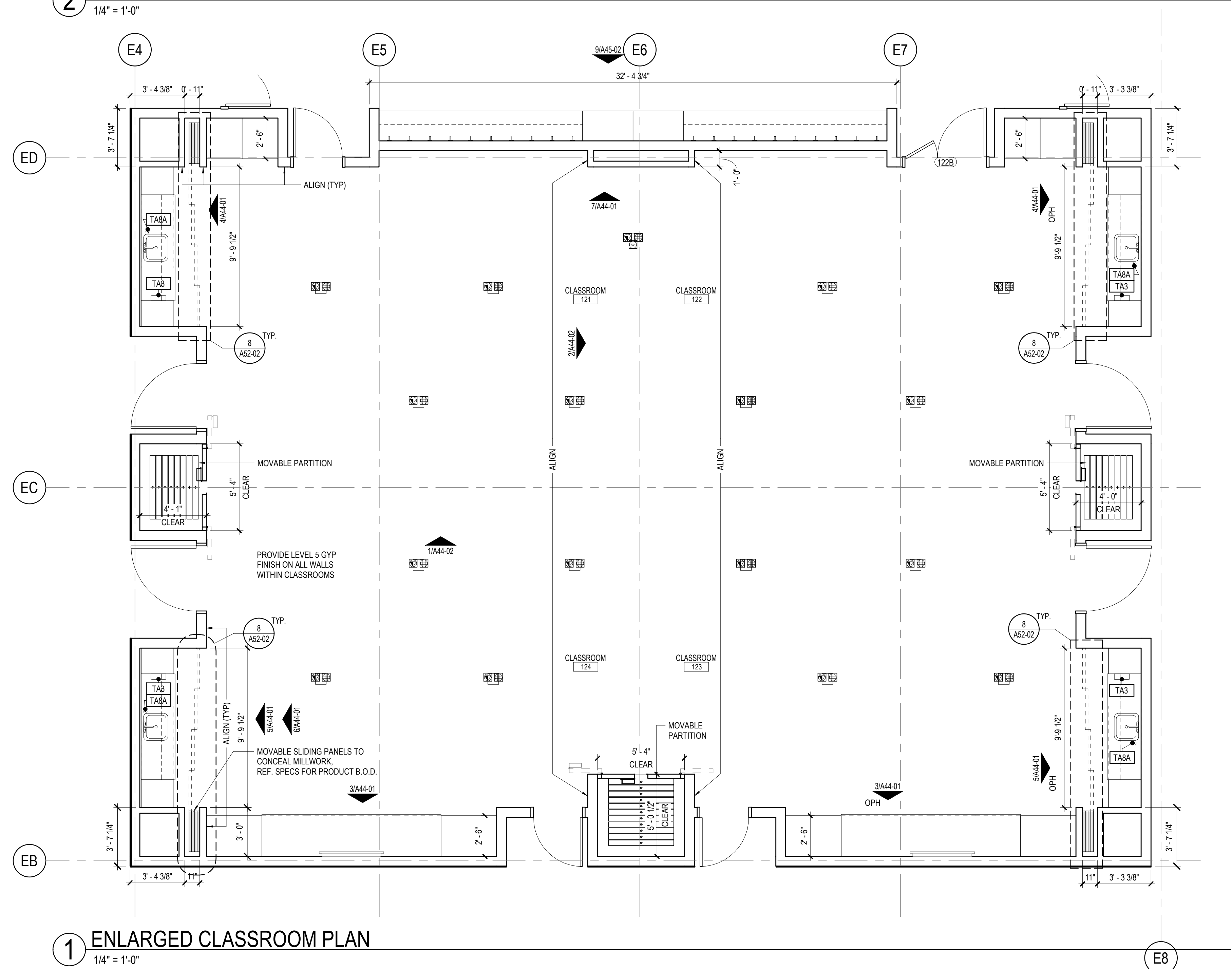
4 INT ELEVATION - OPEN MILLWORK - NORTH CLASSROOMS
1/4" = 1'-0"



3 INT ELEVATION - CLASSROOM DISPLAY WALL - SOUTH
1/4" = 1'-0"



2 ENLARGED CLASSROOM RCP
1/4" = 1'-0"



1 ENLARGED CLASSROOM PLAN
1/4" = 1'-0"

Perkins&Will

1001 McKinney
Suite 1300
Houston, TX 77002
1713.366.4000
www.perkinswill.com

CONSULTANTS

CIVIL
WALKER PARTNERS, LLC
823 WASHINGTON AVENUE, SUITE 100,
WACO, TEXAS 76701
STRUCTURAL
ENIGHT HAYNES WHALEY
12803 SW FREEWAY, SUITE 603,
STAFFORD, TEXAS 77477
MEP
AFFILIATED ENGINEERS, INC.
ONE GREENWAY PLAZA, SUITE 150,
HOUSTON, TEXAS 77046
LANDSCAPING

OWNER
CITY OF WACO
P.O. BOX 2570, WACO, TX 76702



PROJECT



CAMERON PARK ZOO:
EDUCATION CENTER &
VET HOSPITAL

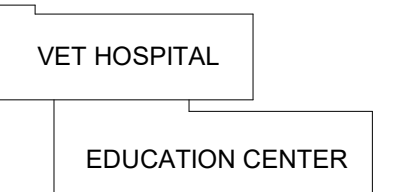
1701 N. 4TH STREET
WACO, TX 76707



CITY OF WACO
CAMERON PARK ZOO

P.O. BOX 2570, WACO, TX
76702

KEYPLAN



ISSUE CHART

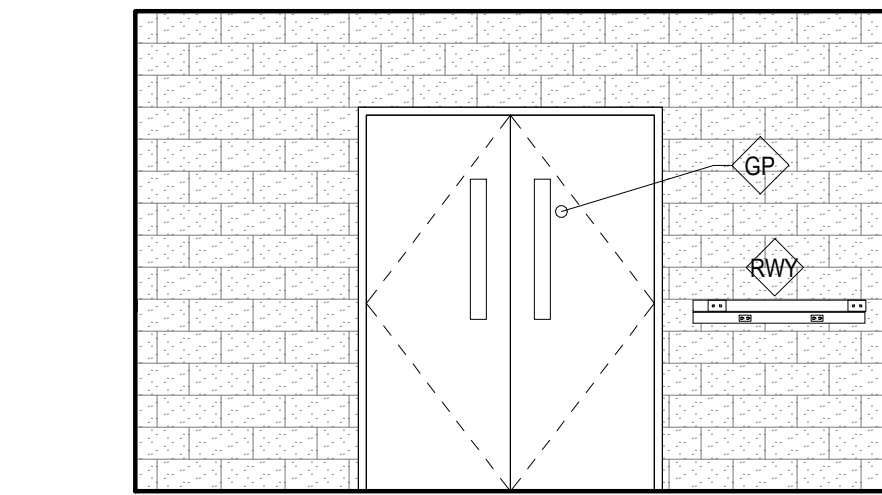
1	ADDENDUM 2	11/9/2022
DATE	DATE	DATE
Job Number	185236.000	185236.000
TITLE	TITLE	TITLE

ENLARGED PLANS &
INT ELEVATIONS

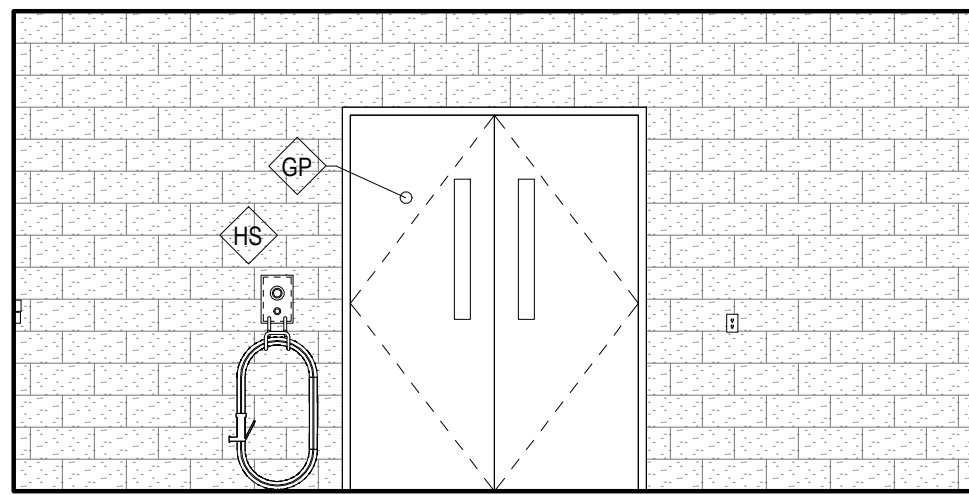
SHEET NUMBER

A44-01

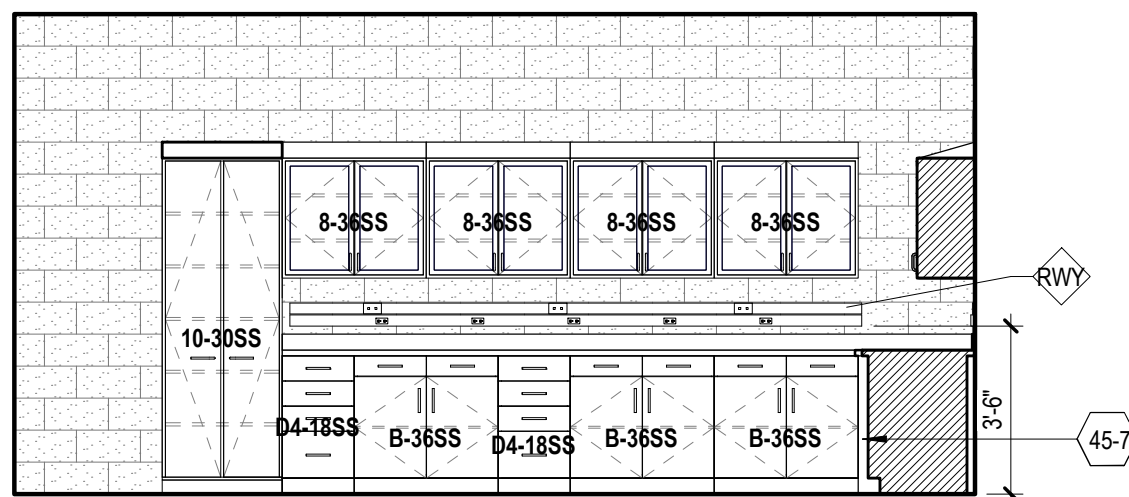
© 2020 Perkins and Will



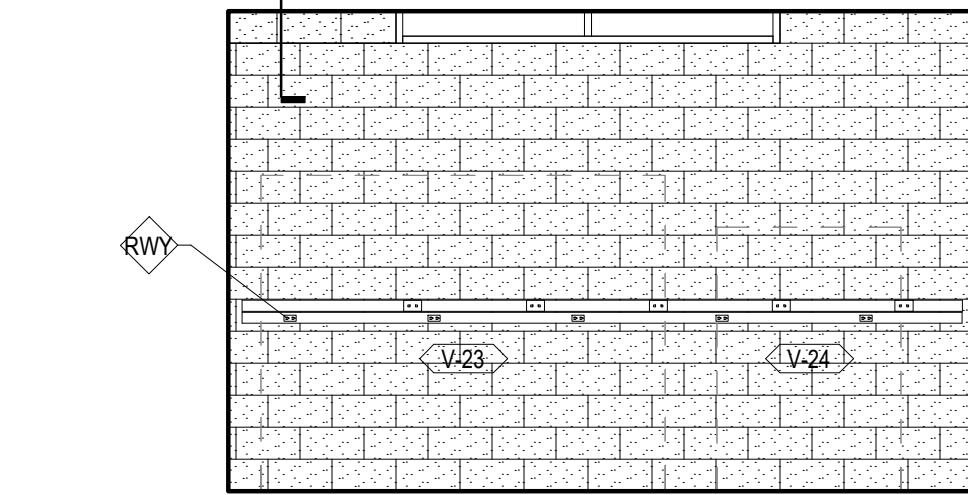
7 INT ELEVATION - RADIOLOGY NORTH
1/4" = 1'-0"



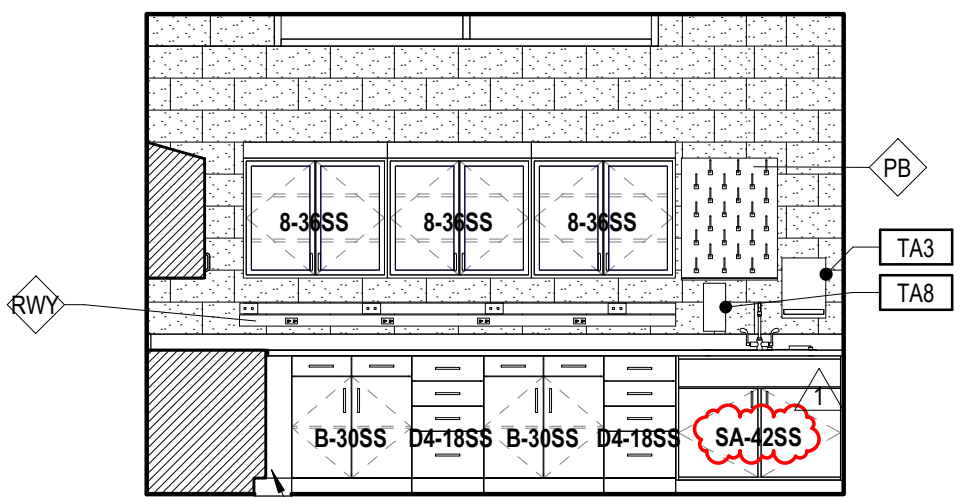
6 INT ELEVATION - RADIOLOGY EAST
1/4" = 1'-0"



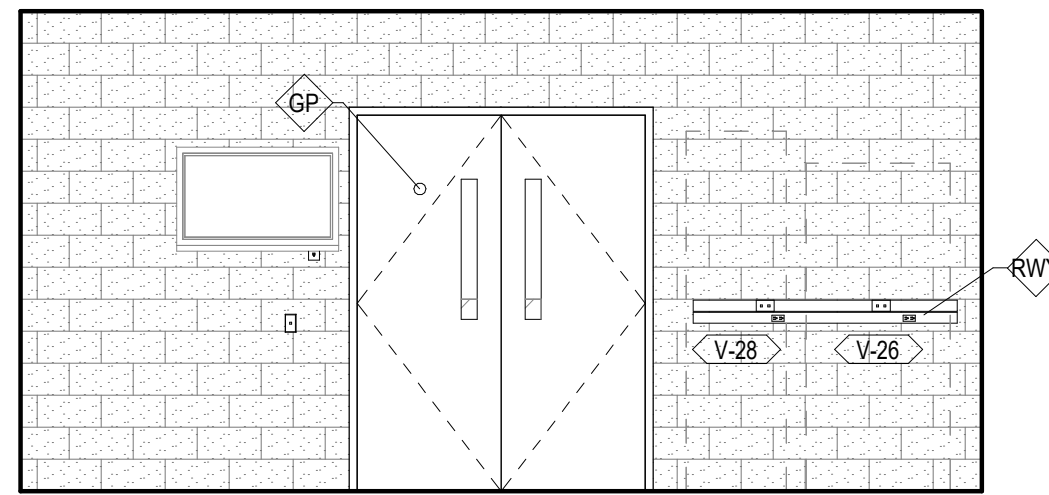
3 INT ELEVATION - TREATMENT EAST
1/4" = 1'-0"



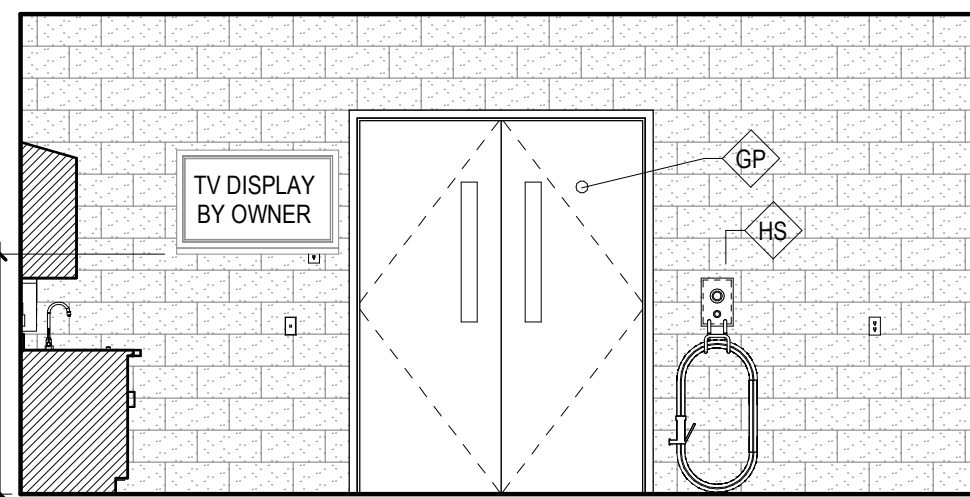
5 INT ELEVATION - RADIOLOGY SOUTH
1/4" = 1'-0"



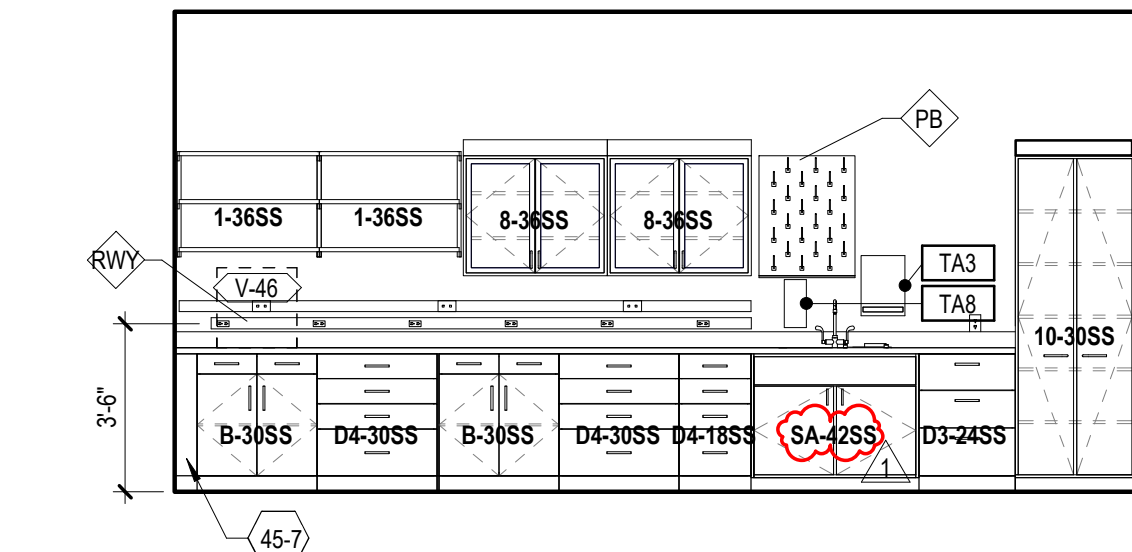
2 INT ELEVATION - TREATMENT SOUTH
1/4" = 1'-0"



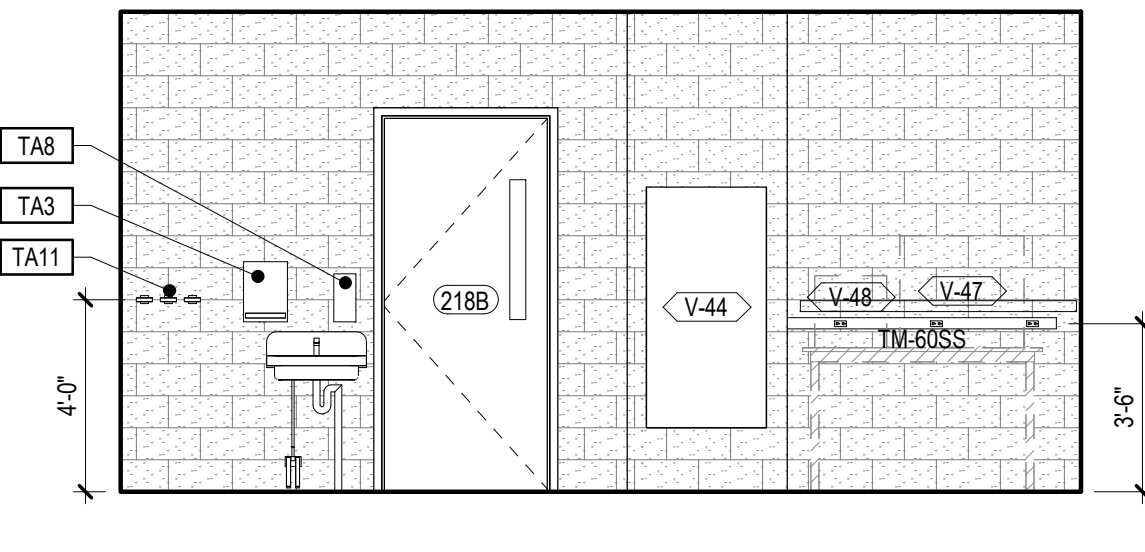
4 INT ELEVATION - RADIOLOGY WEST
1/4" = 1'-0"



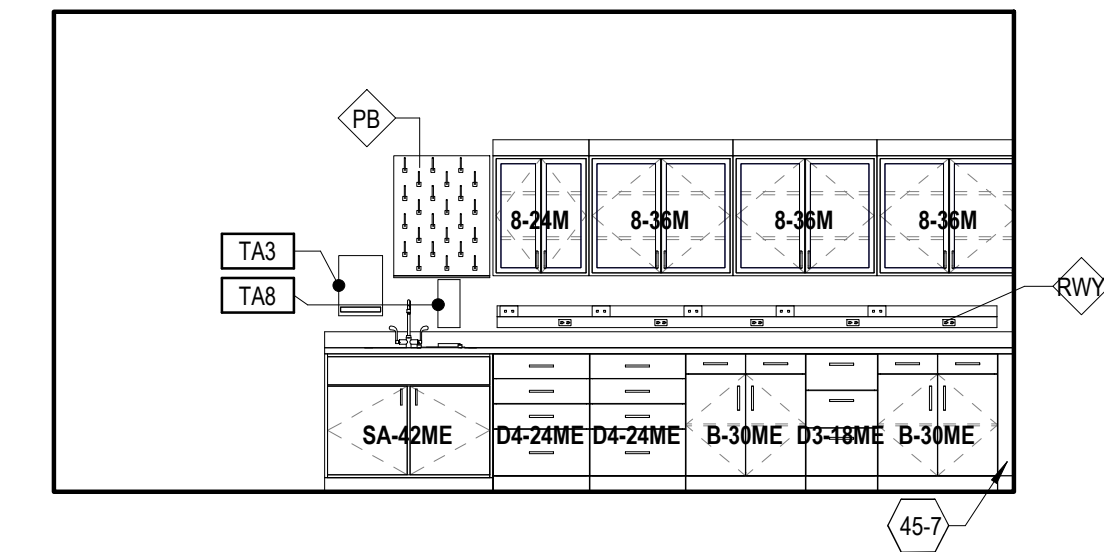
1 INT ELEVATION - TREATMENT WEST
1/4" = 1'-0"



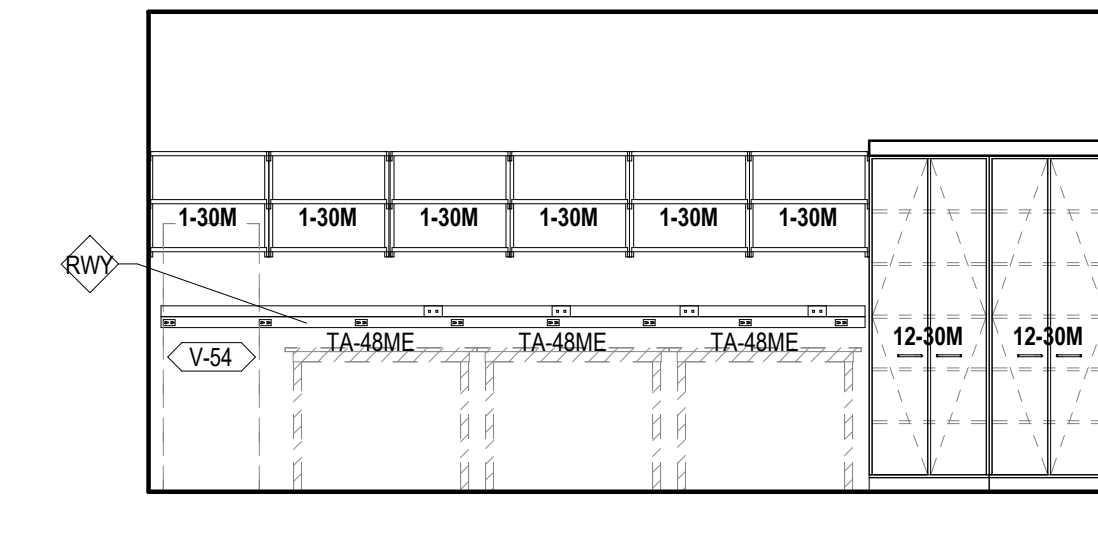
14 INT ELEVATION - INST. PREP WEST
1/4" = 1'-0"



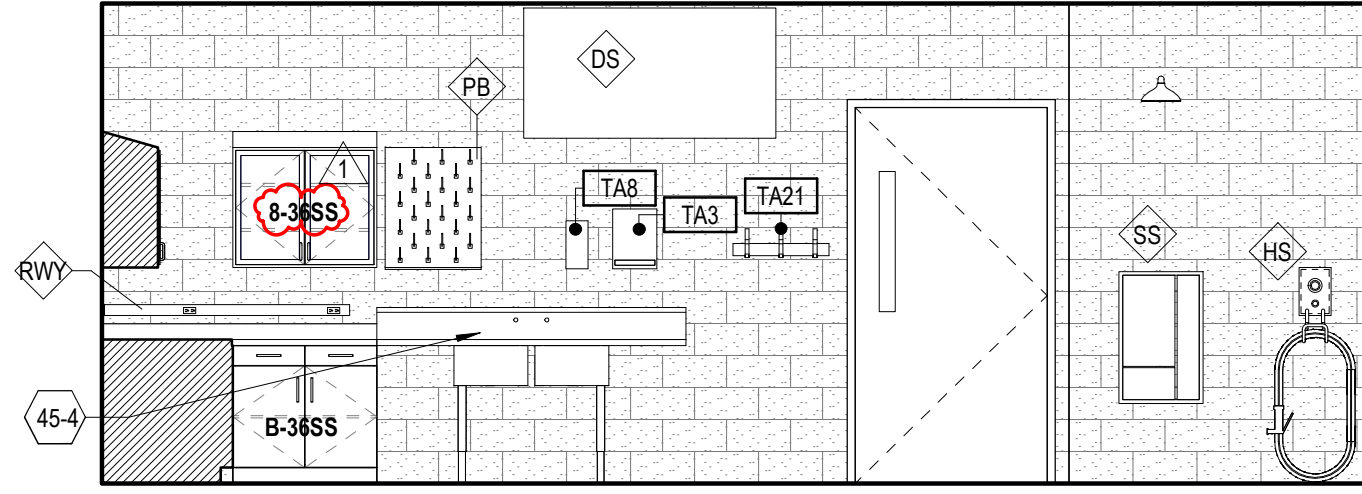
13 INT ELEVATION - INST. PREP EAST
1/4" = 1'-0"



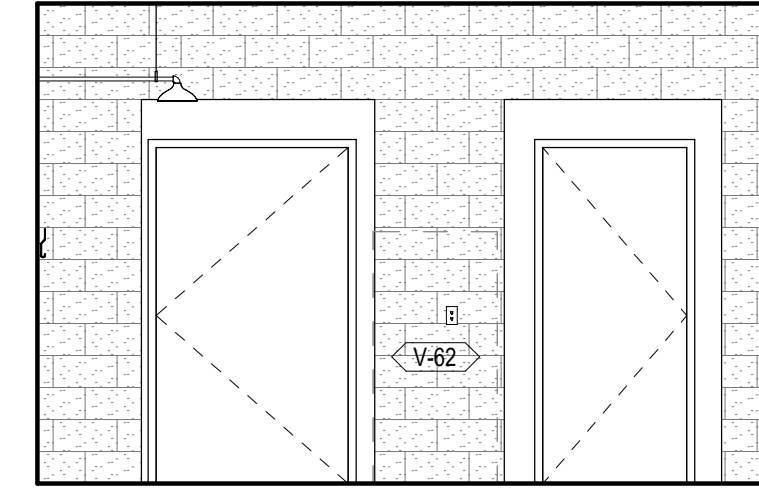
12 INT ELEVATION - CLINICAL PATHOLOGY EAST
1/4" = 1'-0"



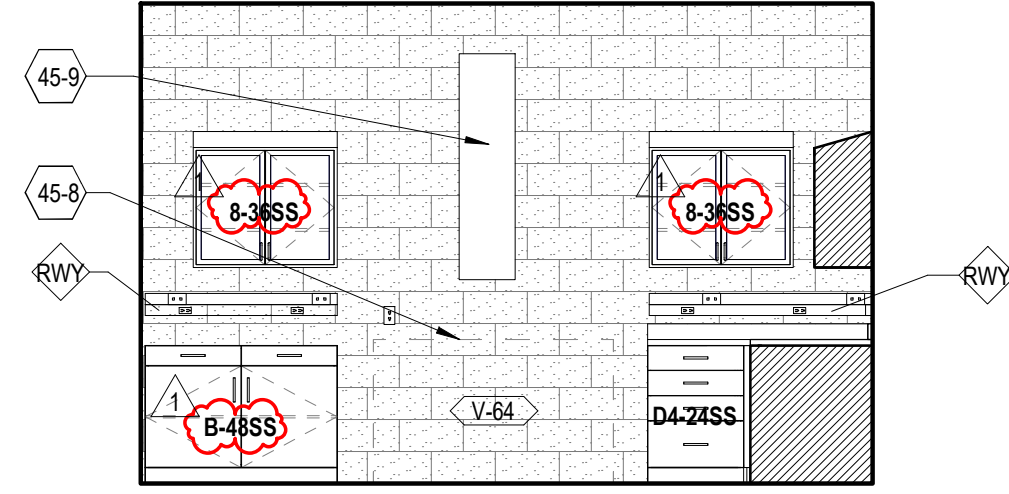
11 INT ELEVATION - CLINICAL PATHOLOGY WEST
1/4" = 1'-0"



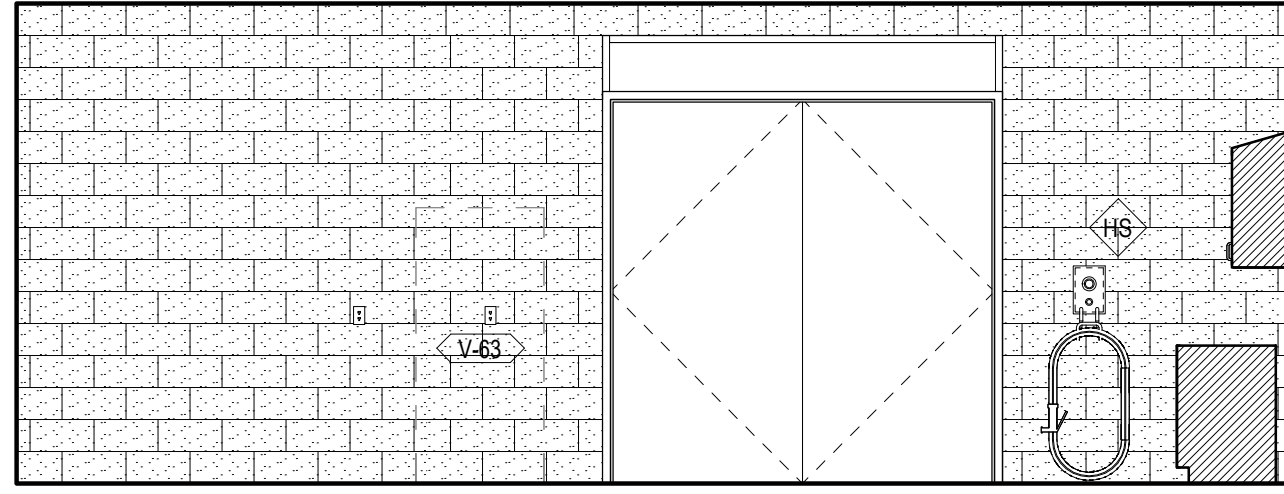
16 INT ELEVATION - NECROPSY SOUTH
1/4" = 1'-0"



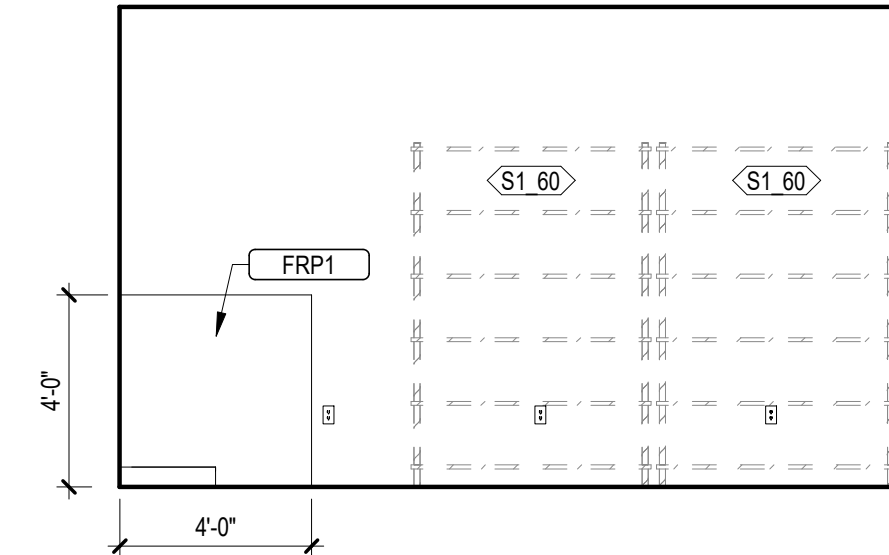
15 INT ELEVATION - NECROPSY WEST
1/4" = 1'-0"



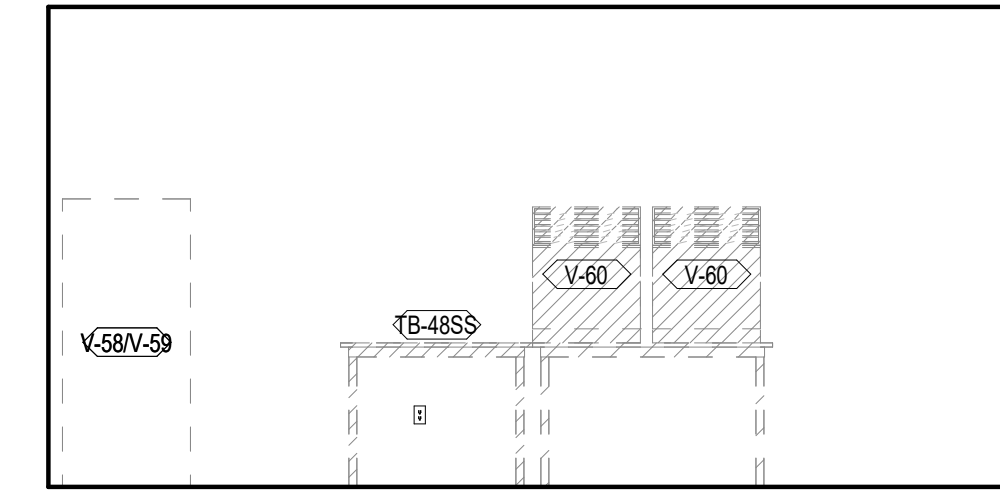
17 INT ELEVATION - NECROPSY EAST
1/4" = 1'-0"



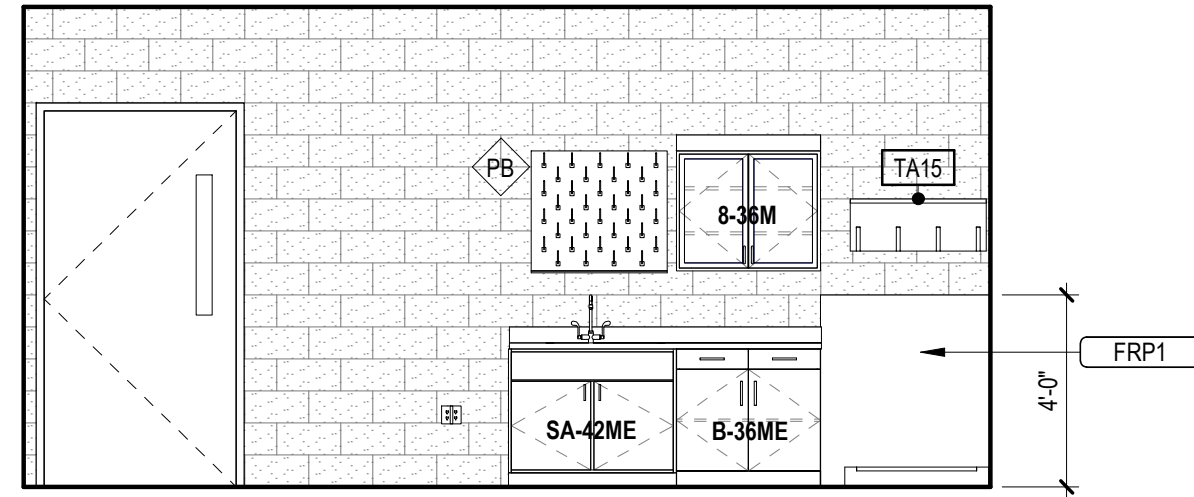
18 INT ELEVATION - NECROPSY NORTH
1/4" = 1'-0"



20 INT ELEVATION - LAUNDRY EAST
1/4" = 1'-0"



19 INT ELEVATION - LAUNDRY WEST
1/4" = 1'-0"



21 INT ELEVATION - JANITOR/STORAGE NORTH
1/4" = 1'-0"

INTERIOR ELEVATION
GENERAL NOTES

- UTILITIES ON THESE DRAWINGS ARE SHOWN FOR REFERENCE AND LOCATION ONLY. REFER TO MEP DRAWINGS FOR MORE INFORMATION.
- REFER TO A17 SERIES FOR UTILITY, CASEWORK AND EQUIPMENT COORDINATION PLANS.
- REFER TO A17 SERIES FOR CAGING PLANS AND ELEVATIONS.
- UTILITY ROUTING TO BE CONCEALED IN-WALL AND/OR ABOVE CEILING. EXPOSED CONDUIT NOT PERMITTED UNLESS NOTED OTHERWISE.

INTERIOR ELEVATION LEGEND

TA1

TOILET ACCESSORY. REFER TO A43-01 FOR LEGEND.

OWNER FURNISHED ITEM/ EQUIPMENT

CONTRACTOR FURNISHED ITEM/ EQUIPMENT

V-44

EQUIPMENT TAG, RE: A17 SERIES FOR EQUIPMENT SCHEDULE

XX

LAB SYMBOL/ UTILITY SYMBOL, RE: A67-00 FOR LEGEND

OWNER FURNISHED OWNER INSTALLED CASEWORK

OWNER FURNISHED OWNER INSTALLED EQUIPMENT ITEM

CASEWORK TYPE PLAN DESIGNATIONS

TYPE OF CASEWORK

WIDTH

CABINET MATERIAL

COUNTERTOP MATERIAL

MA - 30

ME

PLAN DESIGNATIONS

SS

DESIGNATES STAINLESS STEEL CABINET AND COUNTERTOP FINISH

E

DESIGNATES EPOXY COUNTERTOP FINISH

M

DESIGNATES PAINTED METAL CASEWORK

P

DESIGNATES POLYPROPYLENE CABINET FINISH

MISC. EQUIPMENT
MOUNTING HEIGHTS

RE: A43-00 FOR MOUNTING HEIGHTS OF TOILET ACCESSORIES NOT SHOWN HERE.

RE: A67-01 FOR PEG BOARD MOUNTING DETAILS

HOSE STATION

SURFACE MOUNTED RACEWAY

NOTES BY NUMBER

<<< Indicates Sheet Keynote on Plan

45-4 SCULLERY TYPE SINK, RE: PLUMBING

45-6 MECHANICAL GRILLE FOR LOW EXHAUST, RE: MECHANICAL

45-7 PROVIDE FILLER AS REQUIRED

45-8 COORDINATE ELEVATION OF POWER, PLUMBING AND MECHANICAL CONNECTIONS WITH FINAL EQUIPMENT SELECTION

45-9 MECHANICAL EXHAUST DUCT, RE: MECHANICAL

Perkins&Will

1001 McKinney
Suite 1300
Houston, TX 77002
1713.366.4000
1713.528.3339
www.perkinswill.com

CONSULTANTS

CIVIL

WALKER PARTNERS, LLC
823 WASHINGTON AVENUE, SUITE 100,
WACO, TEXAS 76701

STRUCTURAL

ENSIGHT HAYNES WHALEY
12603 SW FREEWAY, SUITE 603,
STAFFORD, TEXAS 77477

MEP

AFFILIATED ENGINEERS, INC.
ONE GREENWAY PLAZA, SUITE 150,
HOUSTON, TEXAS 77046

LANDSCAPING

PROJECT

CAMERON PARK ZOO

CAMERON PARK ZOO:
EDUCATION CENTER &
VET HOSPITAL

1701 N. 4TH STREET
WACO, TX 76707

CITY OF WACO

CITY OF WACO
CAMERON PARK ZOO

P.O. BOX 2570, WACO, TX
76702

KEYPLAN

VET HOSPITAL

EDUCATION CENTER

TRUE NORTH

ISSUE CHART

11/9/2022

ADDENDUM 2

DATE

11/9/2022

Job Number

185236.000

TITLE

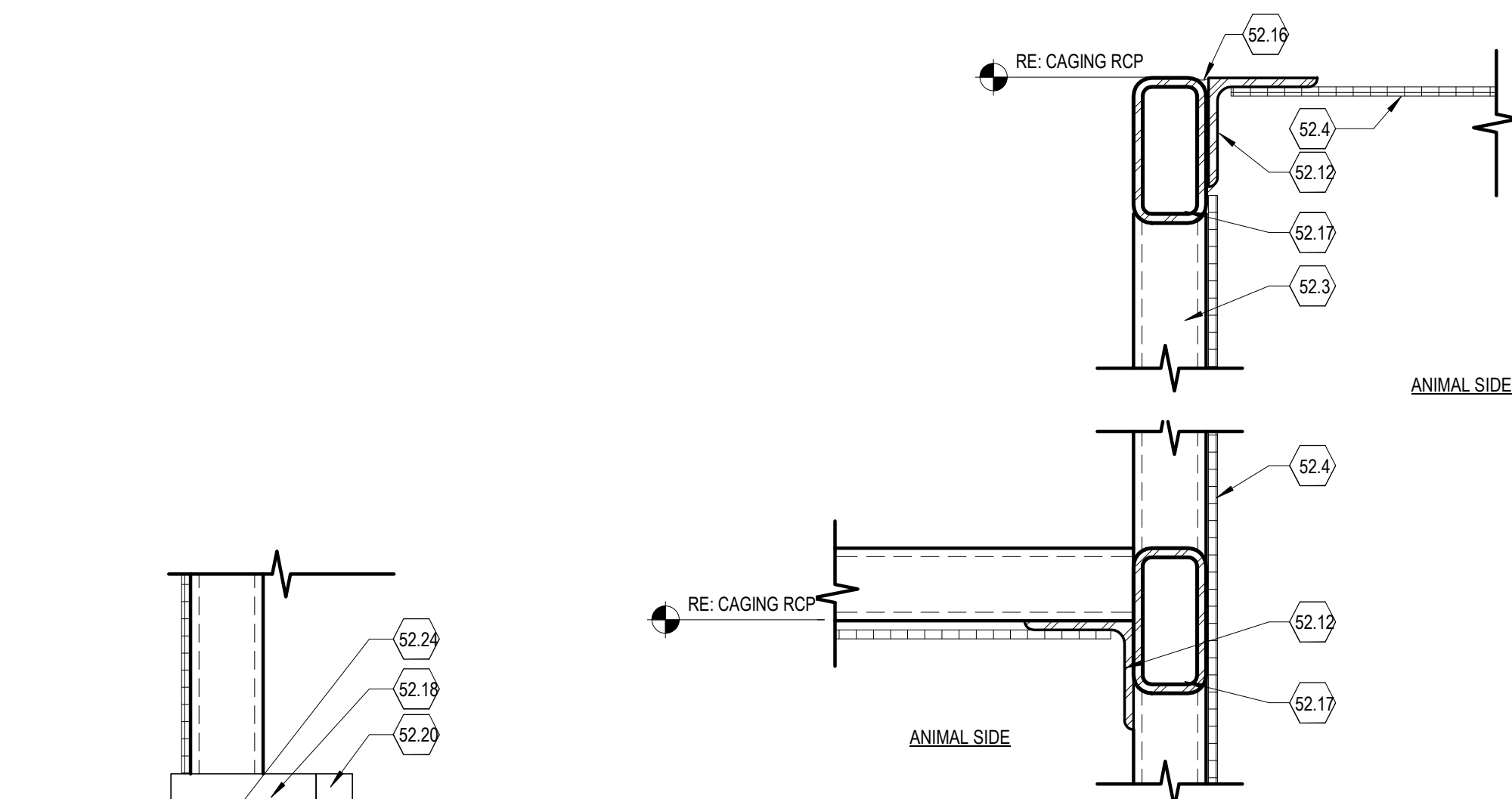
INTERIOR
ELEVATIONS - VET
HOSPITAL

SHEET NUMBER

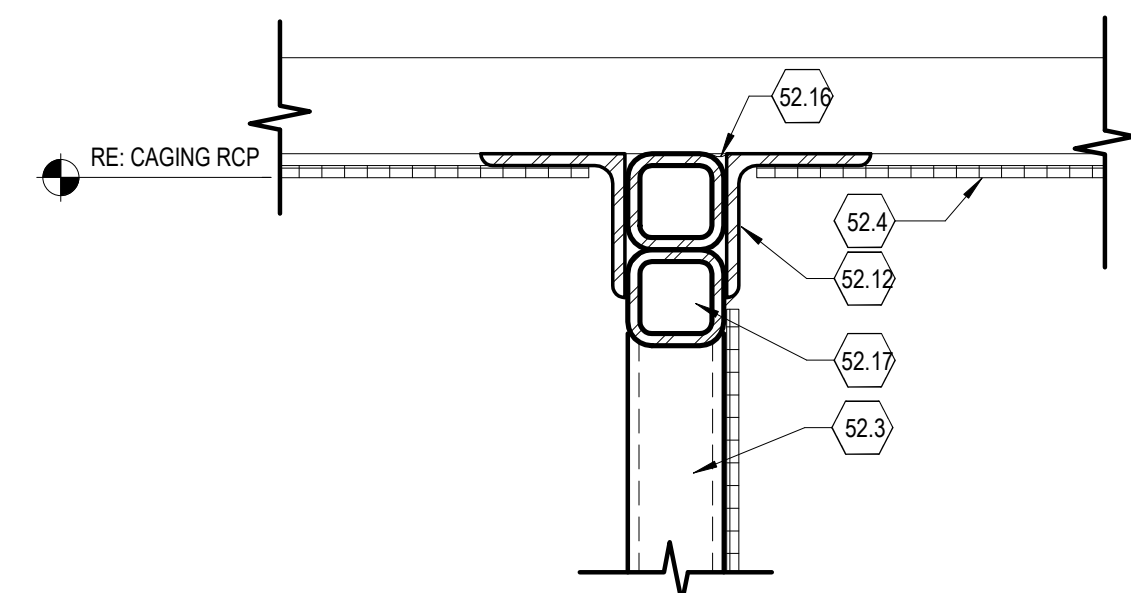
A45-11

© 2020 Perkins and Will

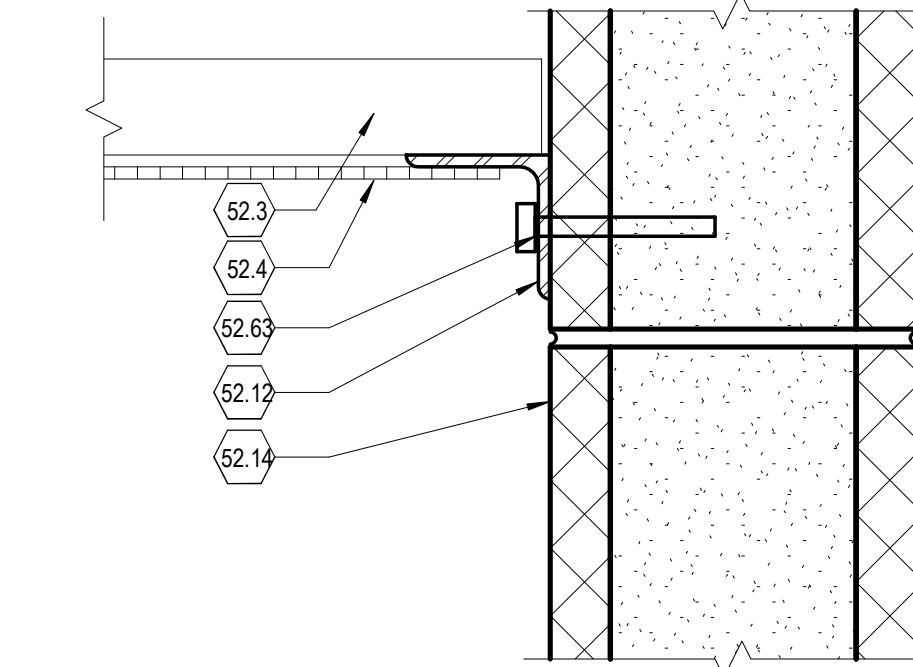
ISSUE FOR BID & PERMIT 04/01/2022



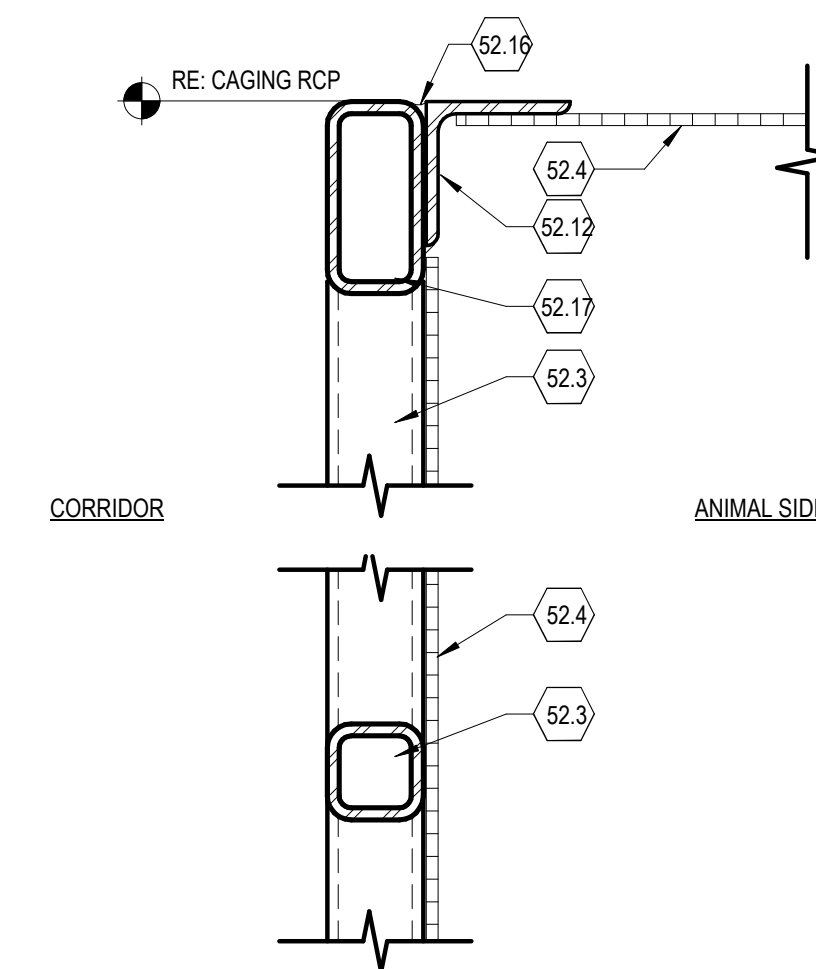
15 SECTION - CAGE CEILING HEIGHT TRANSITION
3" = 1'-0"



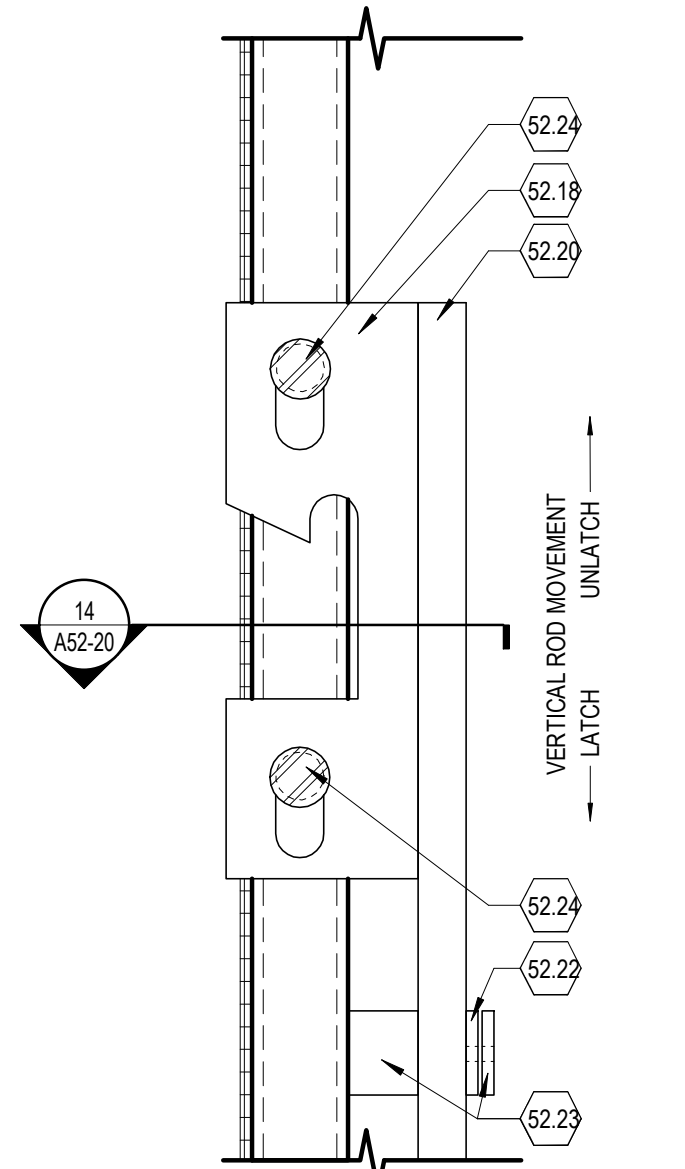
12 CAGE CEILING @ CAGE WALL
3" = 1'-0"



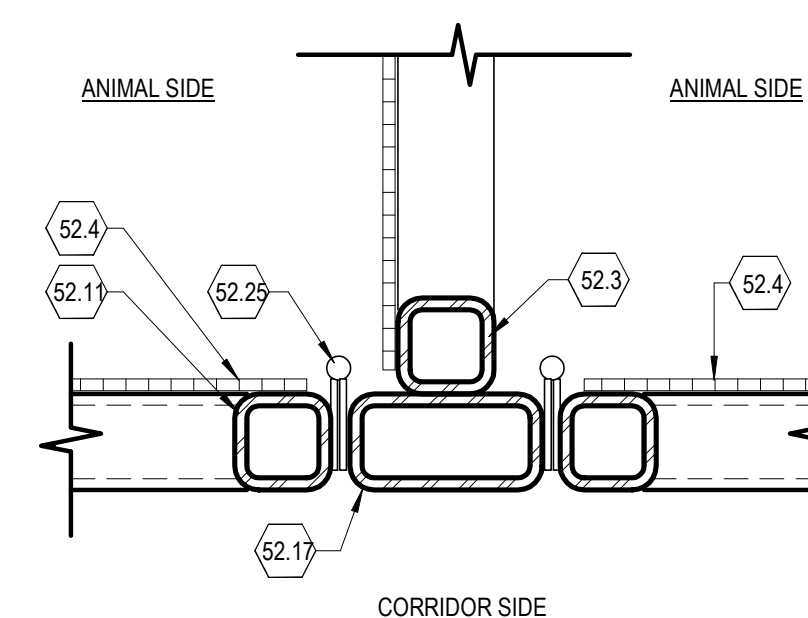
8 SECTION - CAGE CEILING TO CMU WALL
3" = 1'-0"



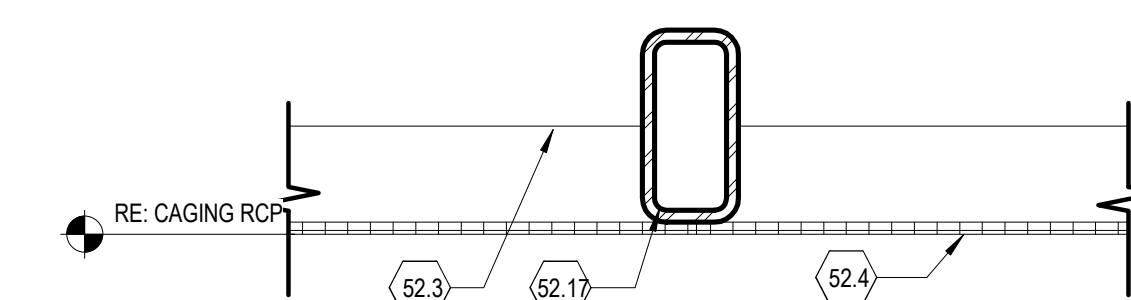
4 SECTION - CAGE HEAD TO CAGE CEILING TRANSITION
3" = 1'-0"



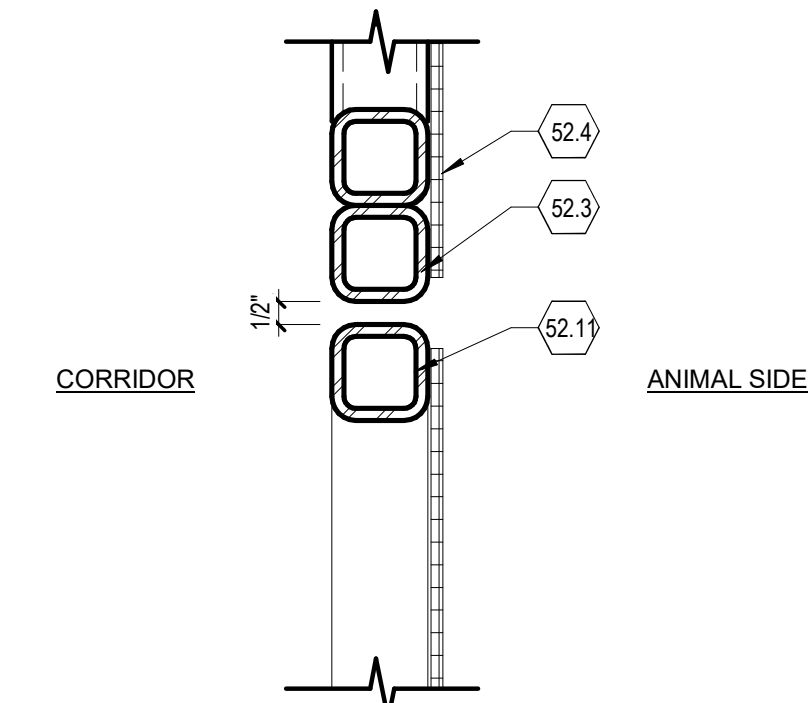
14 PLAN DETAIL - AC-01 LATCHING DEVICE
3" = 1'-0"



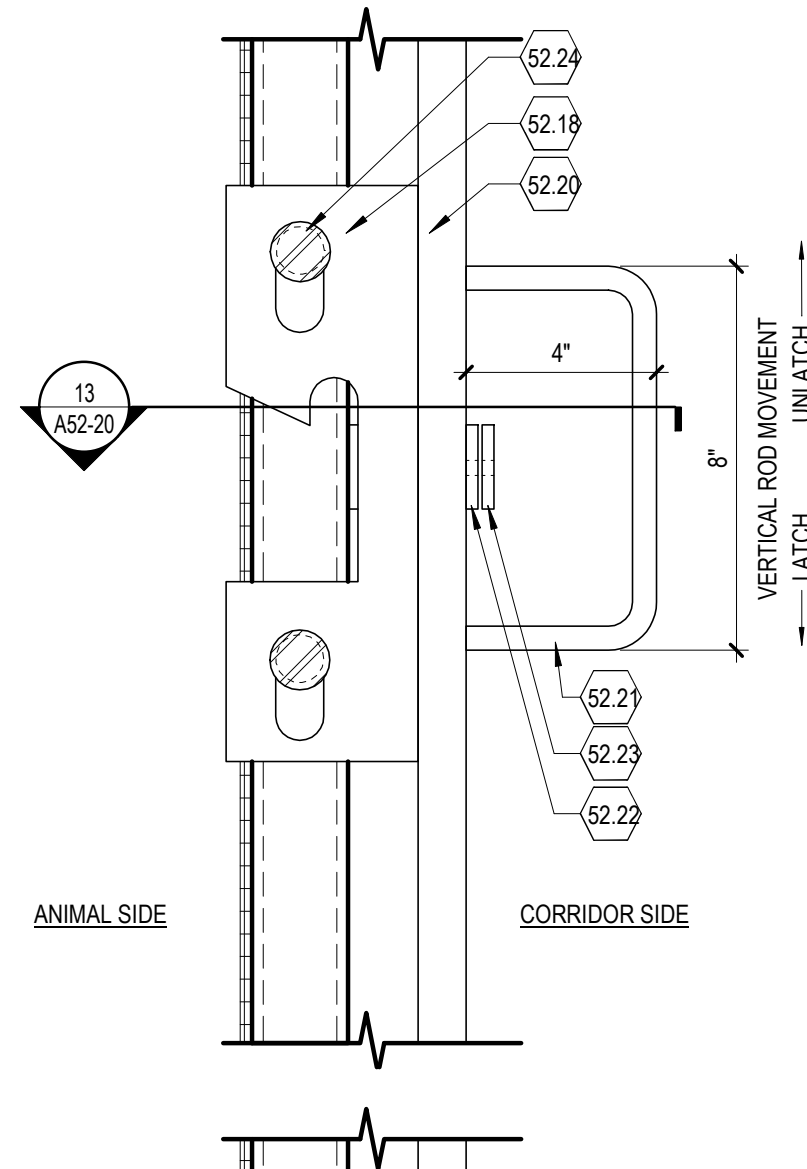
11 PLAN - AC-01/AC-02 GATE HINGE @ CAGE INTERSECTION
3" = 1'-0"



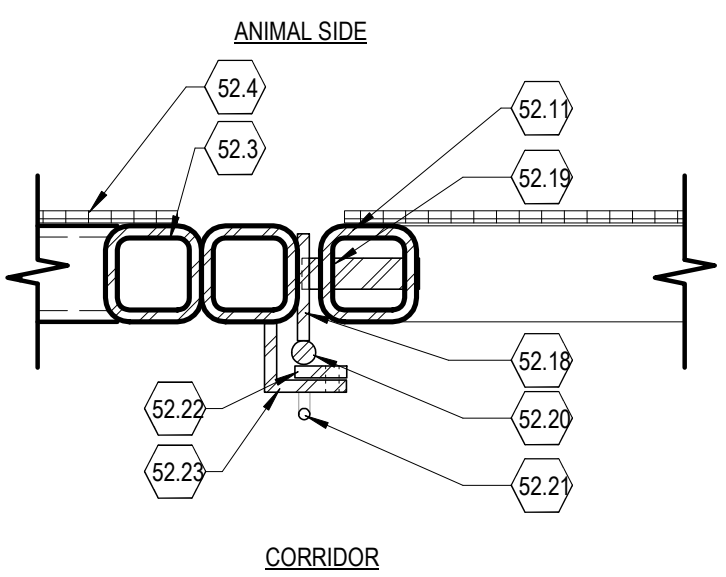
7 CAGE CEILING - PRIMARY MEMBER
3" = 1'-0"



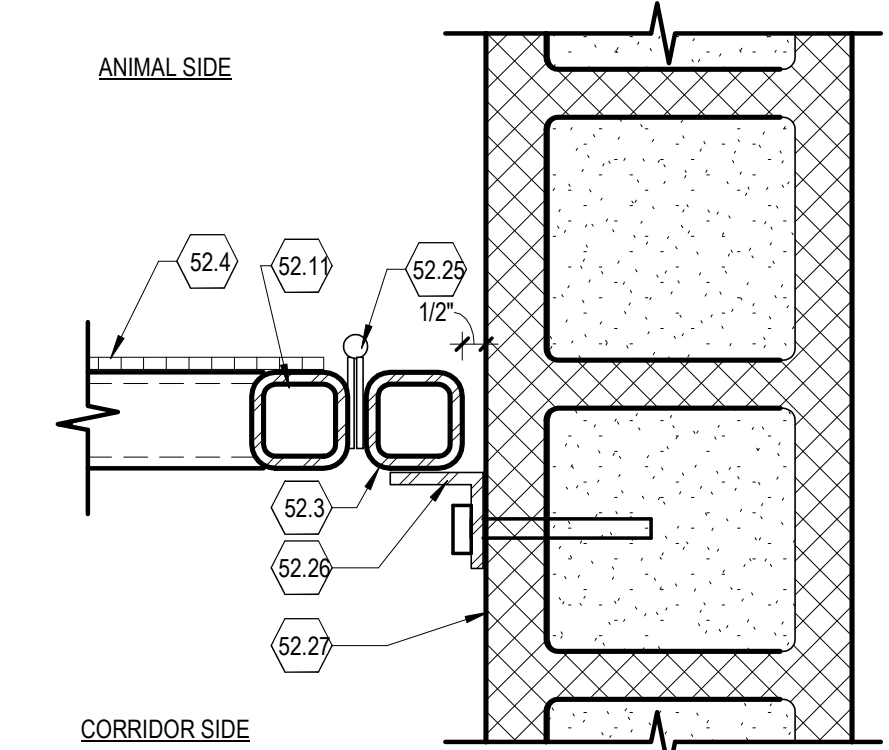
3 SECTION - CAGE @ DOOR HEAD
3" = 1'-0"



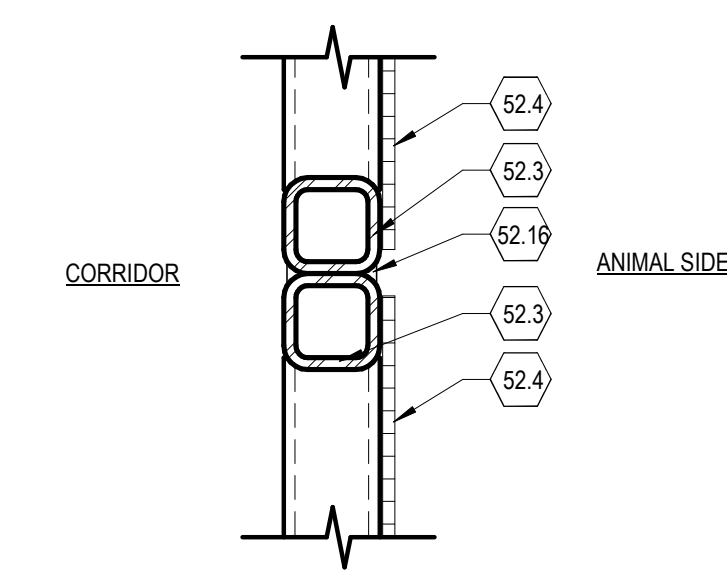
13 PLAN DETAIL - HANDLE & PADLOCK STAPLE
3" = 1'-0"



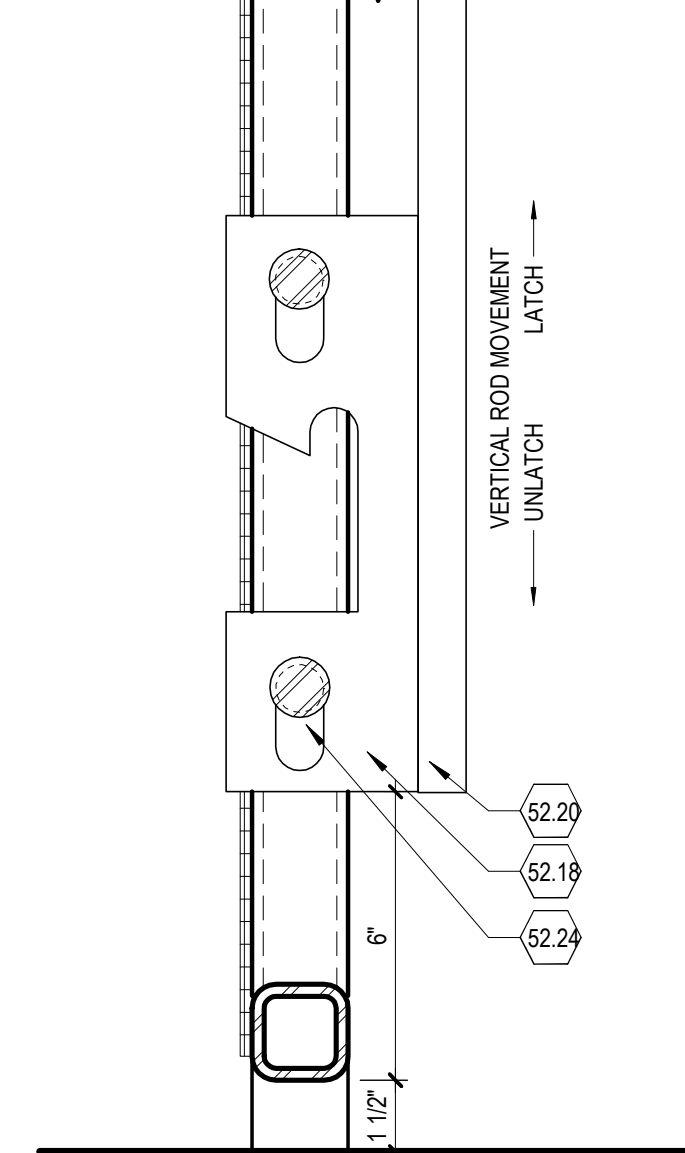
10 PLAN DETAIL - AC-01/AC-02 GATE HINGE @ CMU
3" = 1'-0"



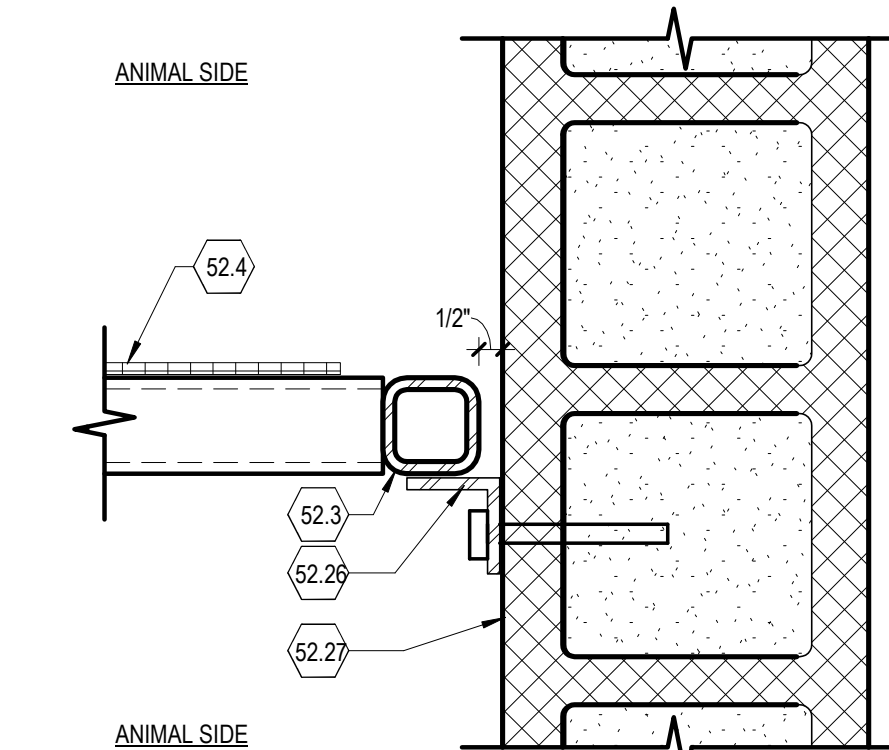
6 PLAN - CAGE PANEL CONNECTION
3" = 1'-0"



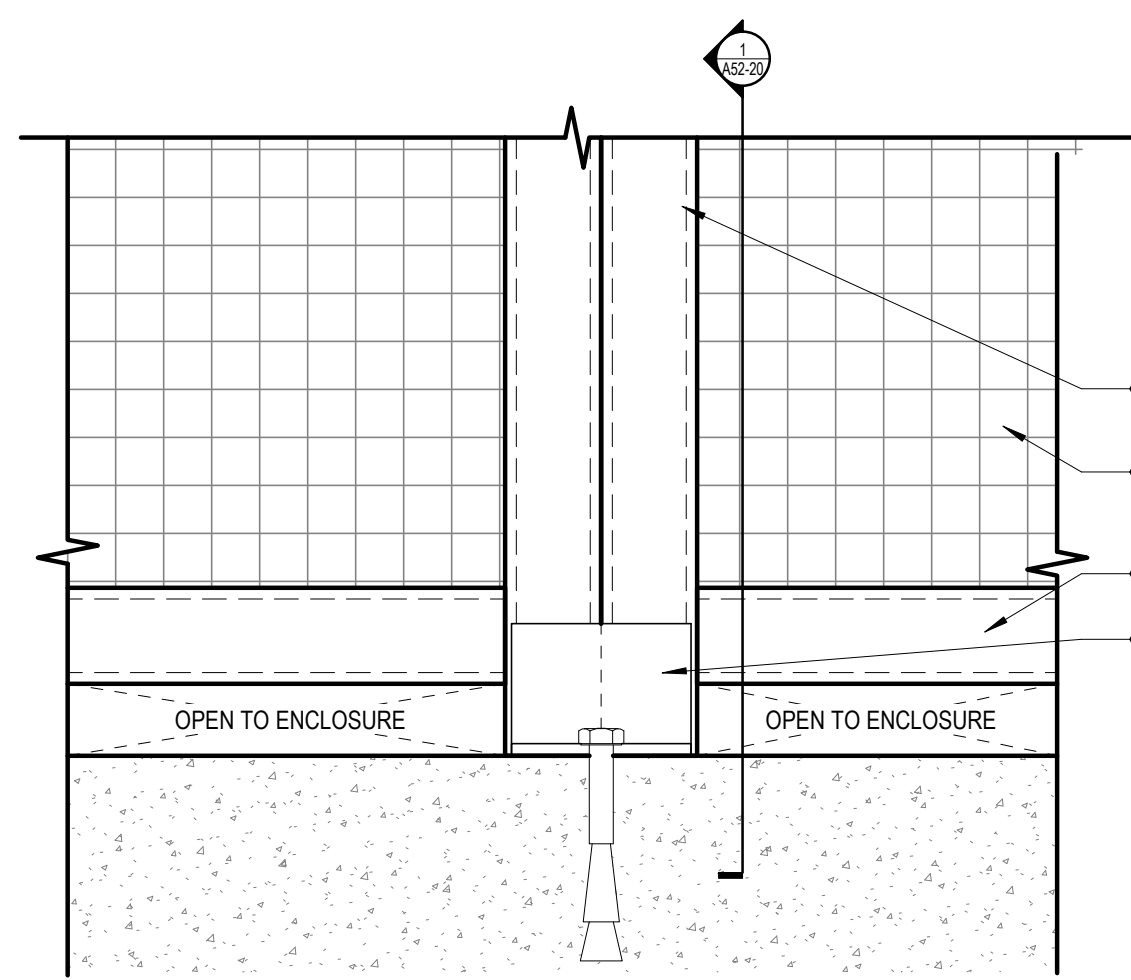
2 SECTION - CAGE PANEL CONNECTION
3" = 1'-0"



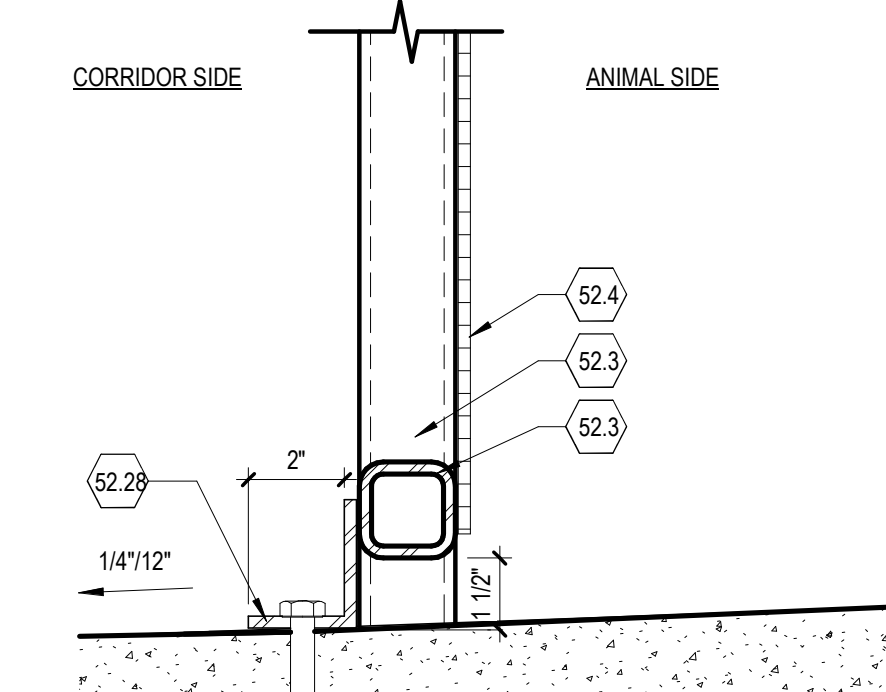
16 SECTION DETAIL - AC-01/AC-02 GATE LATCHING DEVICE
3" = 1'-0"



9 PLAN DETAIL - CAGING @ CMU WALL
3" = 1'-0"



5 ELEVATION - CAGE FOOT DETAIL
3" = 1'-0"



1 SECTION - CAGE FOOT DETAIL
3" = 1'-0"

ANIMAL CAGING GENERAL NOTES

- THE CONTRACTOR SHALL VERIFY AND COORDINATE CLEAR DIMENSIONS REQUIRED FOR OWNER FURNISHED CRATES AND CAGES THAT WILL BE AFFIXED TO ANIMAL CAGING PRIOR TO CAGING FABRICATION.
- REFER TO EQ. CASEWORK & UTILITY COORDINATION PLANS FOR UTILITY REQUIREMENTS.
- OPERATION OF CAGING SLIDES TO BE COORDINATED WITH OWNER STANDARDS PRIOR TO SHOP DRAWING PHASE. DRAWINGS INDICATE DESIGN INTENT.
- FINAL DIMENSIONS, SIZES AND CONFIGURATION OF SLIDE AND GATE OPERATION AND LOCKING TO BE COORDINATED WITH OWNER PRIOR TO SHOP DRAWINGS.
- AFTER ERECTION AND FINAL FINISHING OF FRAMING MEMBERS PROVIDE COLD GALVANIZING PAINT FINISH ON ALL SURFACES OF CAGE FRAMING (REGARDLESS OF CONDITION OF HOT DIP GALVANIZING FINISH) TO PROVIDE A CONSISTENT FINISH THROUGHOUT.
- AFTER ERECTION GRIND ALL WELDS AND CUT STEEL COMPONENTS TO BE SMOOTH AND FREE OF BURRS AND SHARP EDGES. ENSURE ALL COMPONENTS ARE FREE FROM BURRS AND SHARP EDGES AFTER FABRICATION AND GALVANIZING. MAKE EXPOSED JOINTS BUTT TIGHT, FLUSH AND HAIRLINE. EASE EXPOSED EDGES TO SMALL UNIFORM RADIUS. NOTIFY OWNER AND ARCHITECT ONCE COMPLETE FOR FINAL REVIEW AND APPROVAL. UNSATISFACTORY CONDITIONS MUST BE CORRECTED PRIOR TO FINAL APPROVAL.
- REFER TO A17-05 FOR CAGING DOOR SCHEDULE AND TYPES
- REFER TO A52-20 SERIES FOR CAGING DETAILS
- REFER TO A10 / A12 SERIES FOR ITEMS NOT NOTED ON THESE PLANS

ANIMAL CAGING LEGEND

CAGING TAG. REFER TO CAGING SCHEDULE FOR TYPES

ANIMAL CAGING SCHEDULE

- AC-01** LOCATION: INT/EXT CARNIVORE/PRIMATE HOLDING & EXT LARGE KEEPER CORRIDOR
SIZE: 1" x 1" x 1/4" DIA
MATERIAL: GALVANIZED STEEL LOCK CRIMP WIRE MESH
- AC-02** LOCATION: TYPICAL VET HOSPITAL HOLDING
SIZE: 2" x 2" x 1/8" DIA
MATERIAL: GALVANIZED STEEL LOCK CRIMP WIRE MESH
- AC-03** LOCATION: VET HOSPITAL AVIARY CEILING
SIZE: 2" x 2" x 1/8" DIA
MATERIAL: STAINLESS STEEL WOVEN WIRE NETTING
- AC-04** LOCATION: INT/EXT ANIMAL AMBASSADOR HOLDING
SIZE: 1" x 1" x 18 GAUGE
MATERIAL: ALUMINUM WIRE CAGING, BLACK FINISH
- AC-05** LOCATION: TYPICAL EXTERIOR VET HOSPITAL KEEPER CORRIDOR
MATERIAL: 9 GAUGE CHAINLINK, GALVANIZED

ANIMAL CAGING NOTES BY NUMBER

- <<< Indicates Sheet Keynote on Plan
- 52.3 2"x2"x1/4" HSS FRAMING MEMBER
- 52.4 ANIMAL CAGING WIRE MESH WELDED TO FRAMING MEMBER. GRIND WELDS SMOOTH. RE: CAGING SCHEDULE FOR SIZING
- 52.11 GATE FRAME ASSEMBLY, RE: CAGING DOOR SCHEDULE
- 52.12 3"x3" STEEL ANGLE
- 52.14 CMU WALL, FULLY GROUTED
- 52.16 WELDED CONNECTION AT PANEL SECTIONS
- 52.17 2"x4"x1/4" HSS FRAMING MEMBER
- 52.18 1/4" THICK STEEL PLATE LATCH, WELDED TO VERTICAL ROD
- 52.19 1" STEEL ROD LATCH CATCH WELDED TO DOOR FRAME
- 52.20 VERTICAL ROD WITH HANDLE AND PADLOCK STAPLE
- 52.21 STEEL BAR HANDLE
- 52.22 PADLOCK STAPLE, WELDED TO VERTICAL ROD
- 52.23 PADLOCK STAPLE, WELDED TO CAGING FRAME
- 52.24 STEEL ROD WELDED TO CAGE FRAME, SIZED TO ALLOW STEEL PLATE LATCH TO SLIDE VERTICALLY. CAP ROD TO SECURE LATCH PLATE.
- 52.25 HEAVY DUTY WELD ON HINGE WITH NON-REMOVABLE PIN, FULLY WELDED TO DOOR AND FRAME
- 52.26 STEEL CLIP WELDED TO CAGE FRAME. FASTEN TO CMU PARTITION WITH APPROVED MECHANICAL FASTENER. WELD BOLT HEAD TO STEEL CLIP.
- 52.27 FULLY GROUTED CMU BLOCK
- 52.28 STEEL CLIP WELDED TO CAGE FRAME. FASTEN TO CONCRETE SLAB WITH APPROVED MECHANICAL FASTENER. WELD BOLT HEAD TO STEEL CLIP. SCAN SLAB FOR REINFORCEMENT TO AVOID CONFLICT WITH FASTENER.
- 52.63 MECHANICAL FASTENER APPROVED FOR CMU

Perkins&Will

1001 McKinney
Suite 1300
Houston, TX 77002
1713.366.4000
www.perkinswill.com

CONSULTANTS

CIVIL
WALKER PARTNERS, LLC
823 WASHINGTON AVENUE, SUITE 100,
WACO, TEXAS 76701

STRUCTURAL
ENSIGHT HAYNES WHALEY
12803 SW FREEWAY, SUITE 603,
STAFFORD, TEXAS 77477

MEP
AFFILIATED ENGINEERS, INC.
ONE GREENWAY PLAZA, SUITE 150,
HOUSTON, TEXAS 77046

LANDSCAPING

OWNER
CITY OF WACO
P.O. BOX 2570, WACO, TX 76702



PROJECT



**CAMERON PARK ZOO:
EDUCATION CENTER &
VET HOSPITAL**

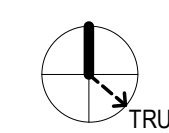
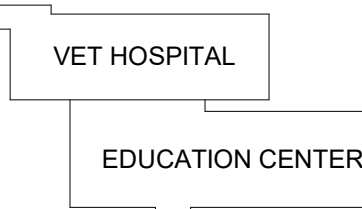
1701 N. 4TH STREET
WACO, TX 76707



**CITY OF WACO
CAMERON PARK ZOO**

P.O. BOX 2570, WACO, TX
76702

KEYPLAN



ISSUE CHART

1	ADDENDUM 2	11/9/2022
ISSUE	ISSUE	DATE
Job Number	185236.000	

TITLE

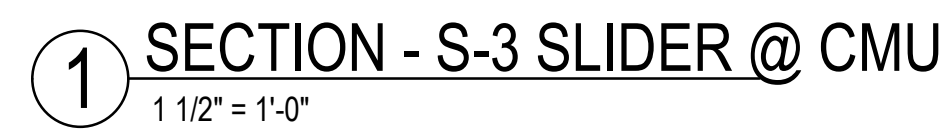
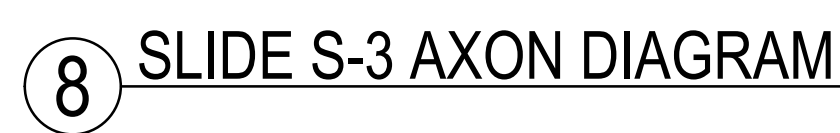
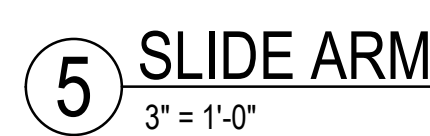
**ANIMAL CAGING
DETAILS**

SHEET NUMBER

A52-20

© 2020 Perkins and Will

ISSUE FOR BID & PERMIT 04/01/2022



© 2020 Perkins and Will