

Solid Waste Facilities Update

City of Waco

May 6, 2025



Kody Petillo, Director of Public Works

Amanda Dyer, Assistant Director of Public Works

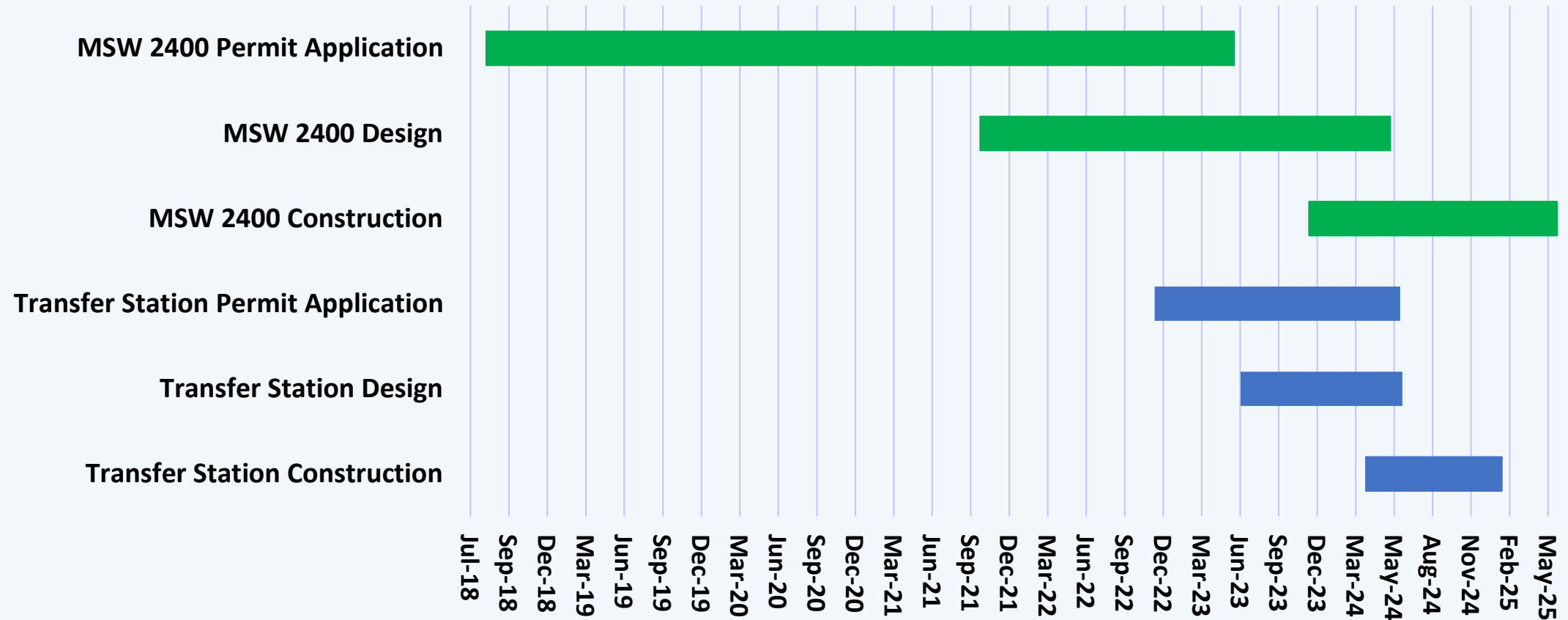
SOLID WASTE FACILITIES UPDATE

Overview

- Project History
- MSW 2400 Progress
- Transfer Station Progress
- Transition Plan

PROJECT HISTORY

SOLID WASTE FACILITIES – PROJECT HISTORY



MSW 2400 & TRANSFER STATION PROGRESS

MSW 2400 LANDFILL



Completed

- Entrance Road
- Perimeter Fencing
- Sector 1
- Scales and Scalehouse

In Progress

- Maintenance Building
- Collection Station

TRANSFER STATION



Completed

- Transfer Station Facility
- Collection Station
- Scales and Scalehouse
- FM 3400 Widening
- Sewer Improvements

SOLID WASTE FACILITIES UPDATE

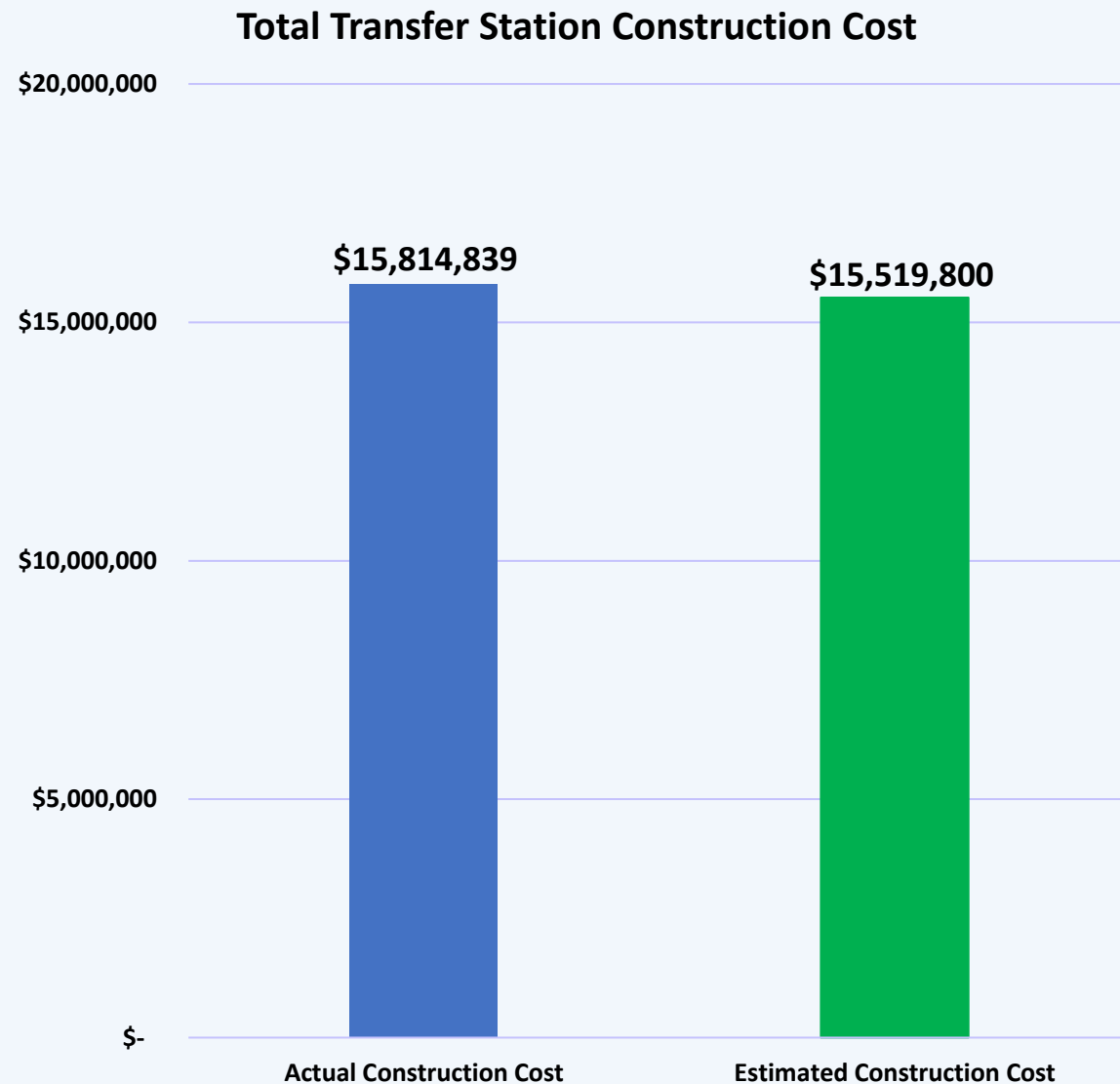


Remaining Work

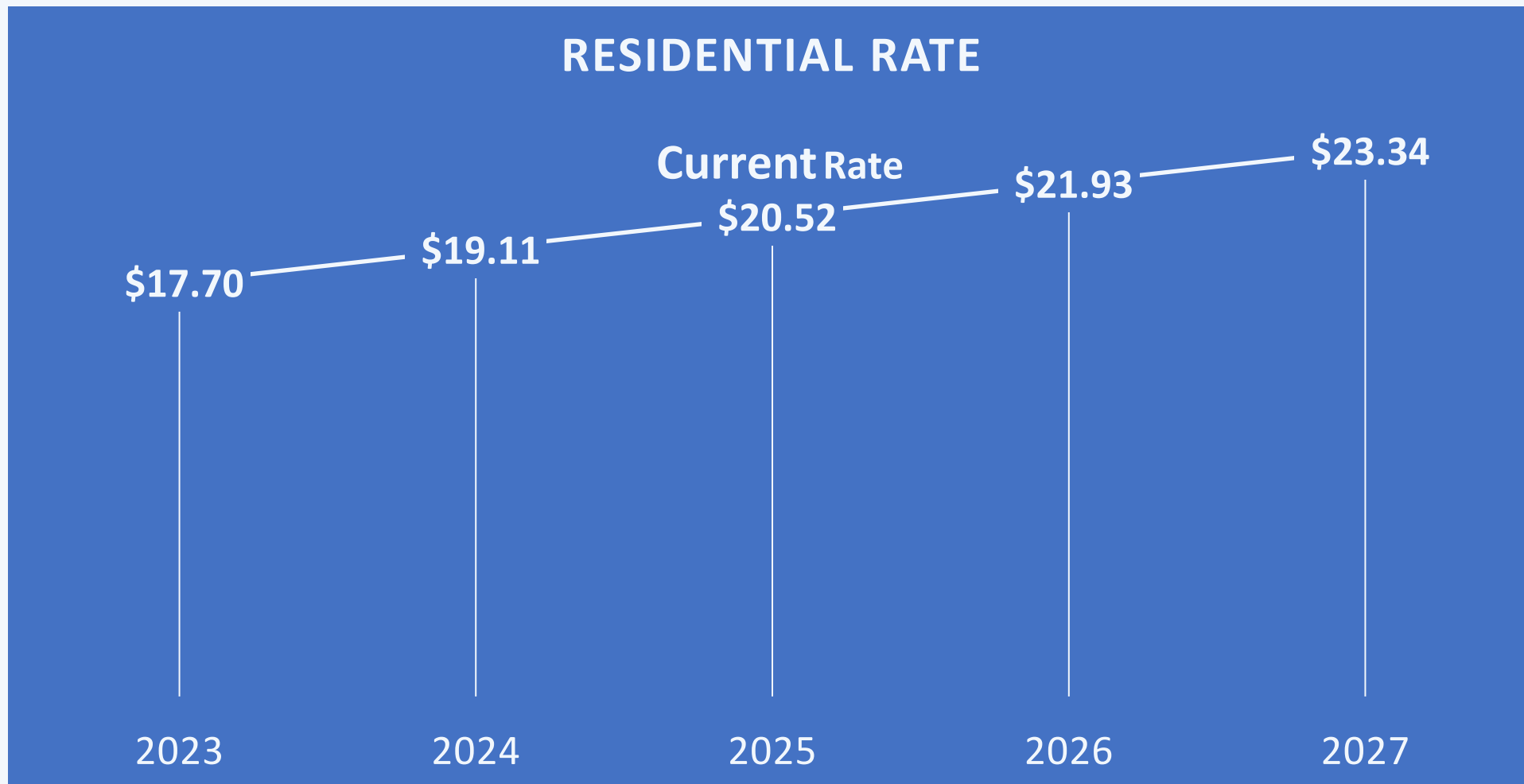
- MSW 2400 Maintenance Building
- MSW 2400 Collection Station
- TCEQ Pre-Opening Inspections

FISCAL SUMMARY

TOTAL CONSTRUCTION COST



RATE IMPACT



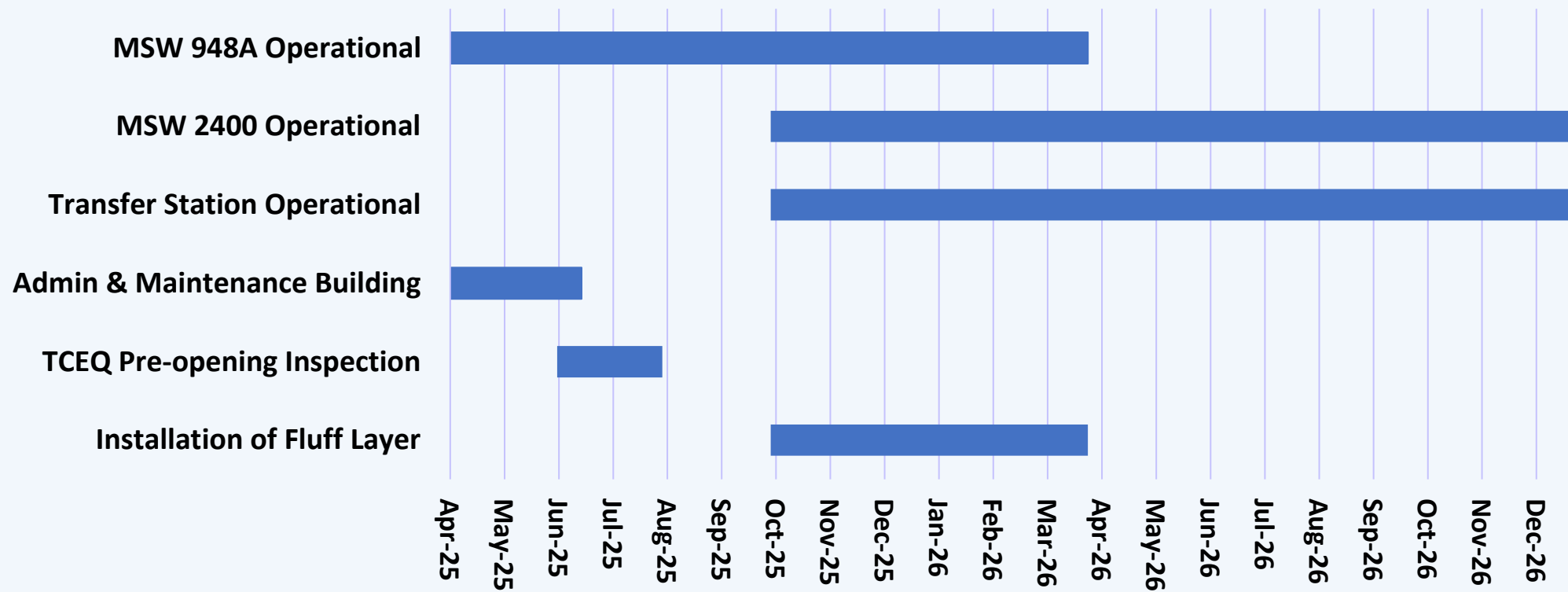
TRANSITION PLAN

SOLID WASTE FACILITIES UPDATE

Transition Plan

- New facilities open: October 1, 2025
- 3–6 months dual operations (948A, 2400, and Transfer Station)
- Establish fluff layer at MSW 2400
- Closure of MSW 948A following sufficient fluff layer development

SOLID WASTE FACILITIES TIMELINE



MSW 2400 LANDFILL



BEFORE



AFTER

TRANSFER STATION



BEFORE



AFTER

SOLID WASTE FACILITIES UPDATE

Summary

- MSW 2400 and Transfer Station construction are substantially complete
- New facilities open October 1, 2025
- MSW 948A closure targeted for Spring 2026
- \$1M annual savings through privatized Transfer Station operations
- MSW 2400 construction costs approx. \$20.8M
- Transfer Station construction costs approx. \$15.8M

THANK YOU.

Please contact kodyp@wacotx.gov for any questions