

# The City of Waco

## China Spring Park Project Update

02.04.2025



Jonathan Cook, Director of Parks & Recreation

# China Spring Park Project Update

---

## Purpose

---

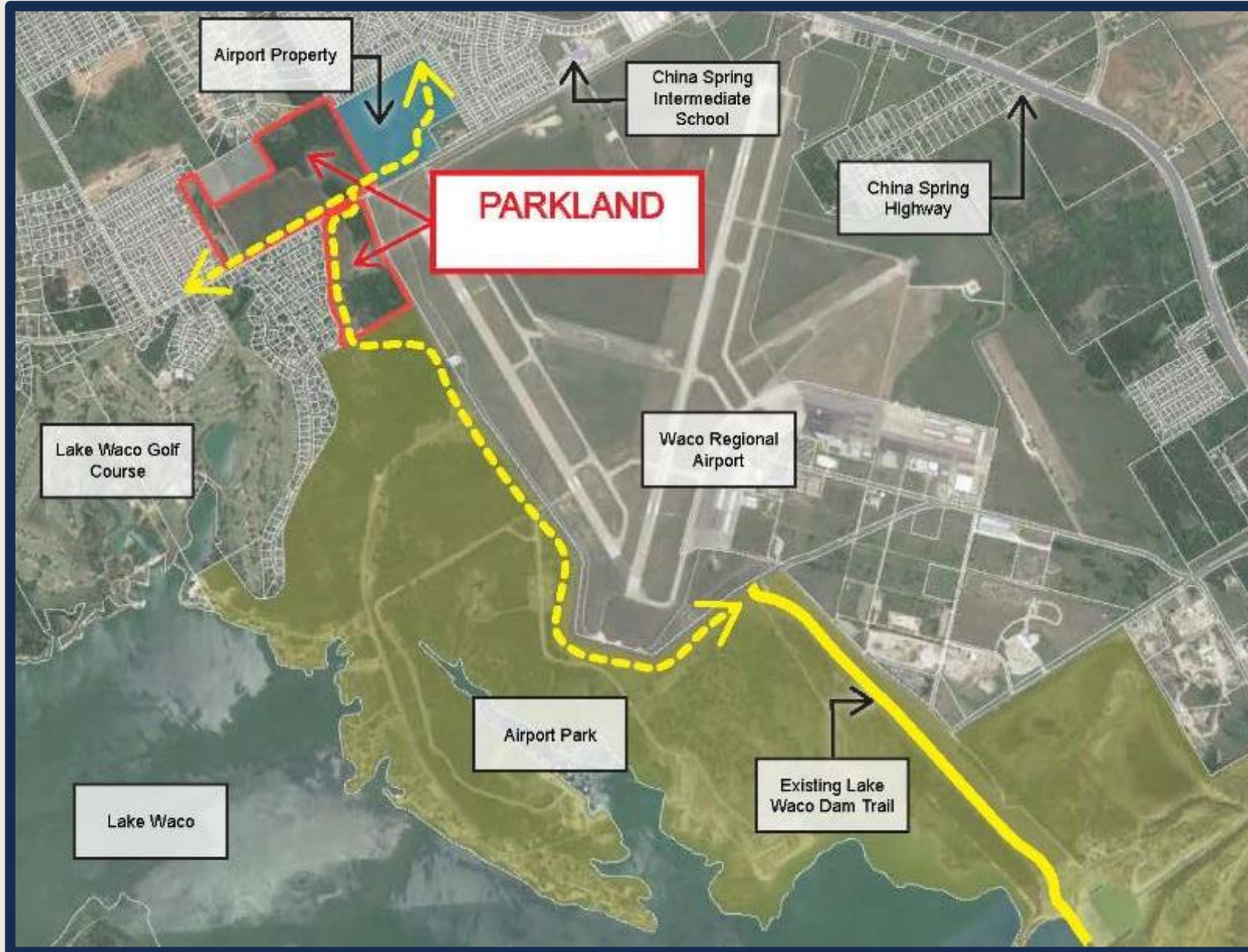
- Provide background on the China Spring Park Development Project
- Review planning values and needs assessment
- Discuss current design and planned amenities and receive feedback
- Next steps

# Project Background



- Parkland in the China Spring area was identified as a priority in 2017 Parks, Recreation and Open Spaces Master Plan.
- Purchase of 85 acres for \$3.2 million approved by City Council in December 2022
- Contract of \$669k awarded to RVi Planning and Landscape Architecture. Visioning and design process in September 2023
  - Site analysis
  - Community input with surveys, neighborhood meetings public, input meetings and stakeholder meetings
  - Vision Plan
  - Schematic and Design Development
  - Construction Documents
- Current construction funding includes \$3.7 million of CIP project funds



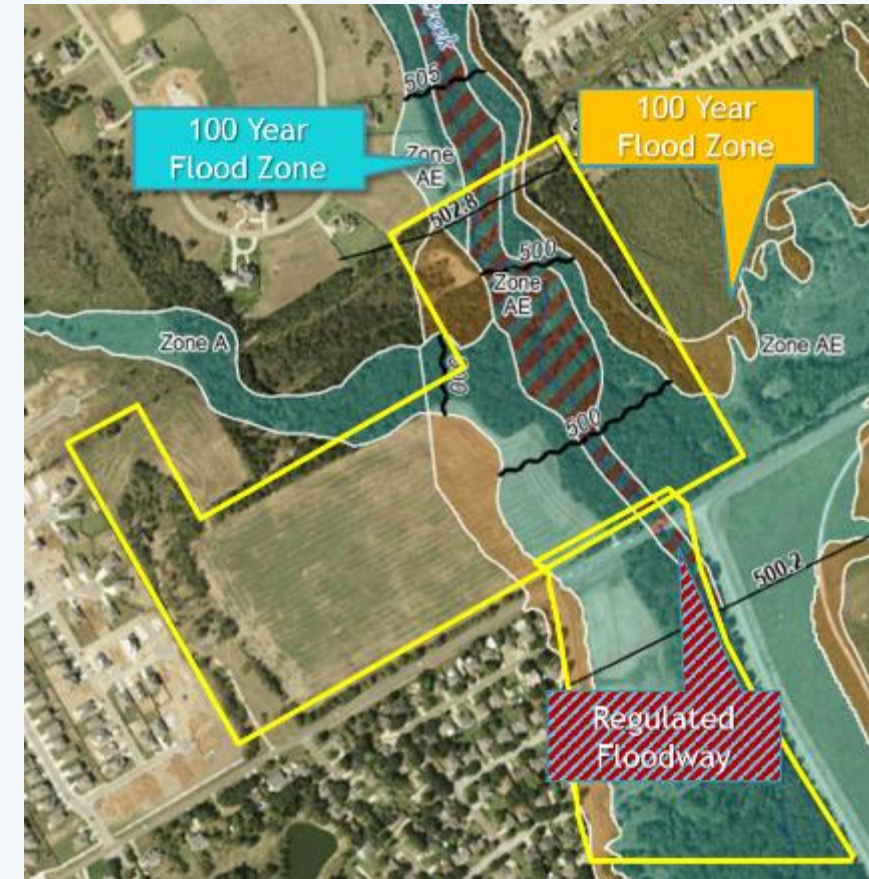


# Park Location

- A natural setting with potential for recreation and connectivity
  - Airport and Fire Station
  - Neighborhoods and School
  - Lake Waco and Corps of Engineers Property
- Two parcels of undeveloped land, located along Flat Rock Road, near the Skeet Eason intersection. Property is on both sides of Flat Rock Road



# Site Analysis

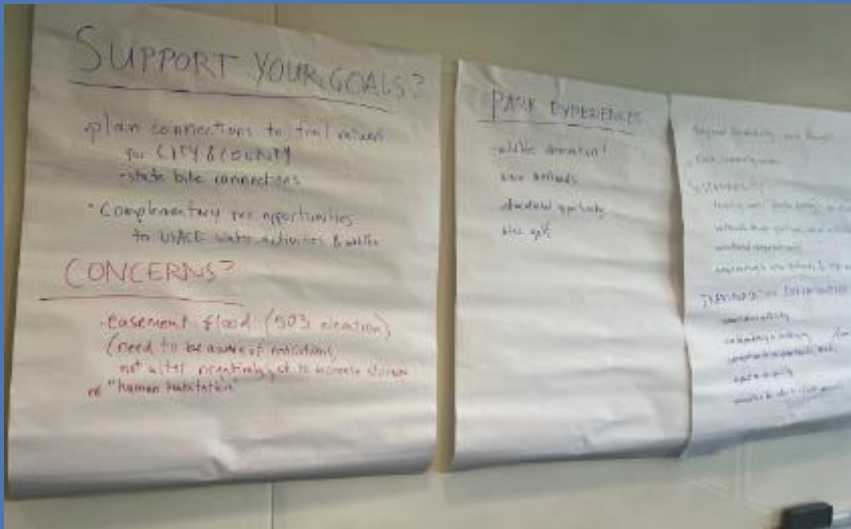






# Community Led Visioning

- 900 completed surveys
- Neighborhood meetings
- Public input meetings
- Stakeholder meetings



# PLANNING VALUES

In conjunction with the City of Waco the following values were created as a guideline for the design and vision of China Spring Park. These planning values were created, refined, and finalized through a design team and client stakeholder workshop, as well as input received during a public meeting, and community survey. These values act as guideposts to direct the design team throughout the planning process, ensuring that any and all design decisions can point back to the value on which it is based.

## Natural Amenities

### Enhance and Preserve Park Natural Amenities

- protect existing watershed and streams
- improve or create habitat areas
- locate intensive uses to minimize impact on natural areas
- improve the health and function of the watershed

## Community

### Foster Social Interaction and Community Cohesion

- develop amenities for families and people of all ages
- include amenities that welcome people of different abilities
- reserve space for community programming
- create gathering spaces

## Passive Recreation

### Connection with Nature/Provide Passive Recreation

- create places for wildlife observation
- develop trail network within the park
- plan connections to larger trail networks for city and county
- provide seating, picnic areas, or other places to pause and relax

## Safety

### Keep Safety in Mind

- work towards providing safe ways for pedestrians and bikers to access the park
- incorporate features such as lighting into the park
- utilize principles of CPTED (Crime Prevention through Environmental Design)
- consider effects of cars and park activities on surrounding neighborhoods

## Active Recreation

### Promote Active Recreation for Fun and Fitness

- provide open space for a variety of field sport uses
- encourage kids to be active with variety of play equipment
- ensure trails and trail materials support walkers, bikers, runners

## Education

### Learning about the Environment

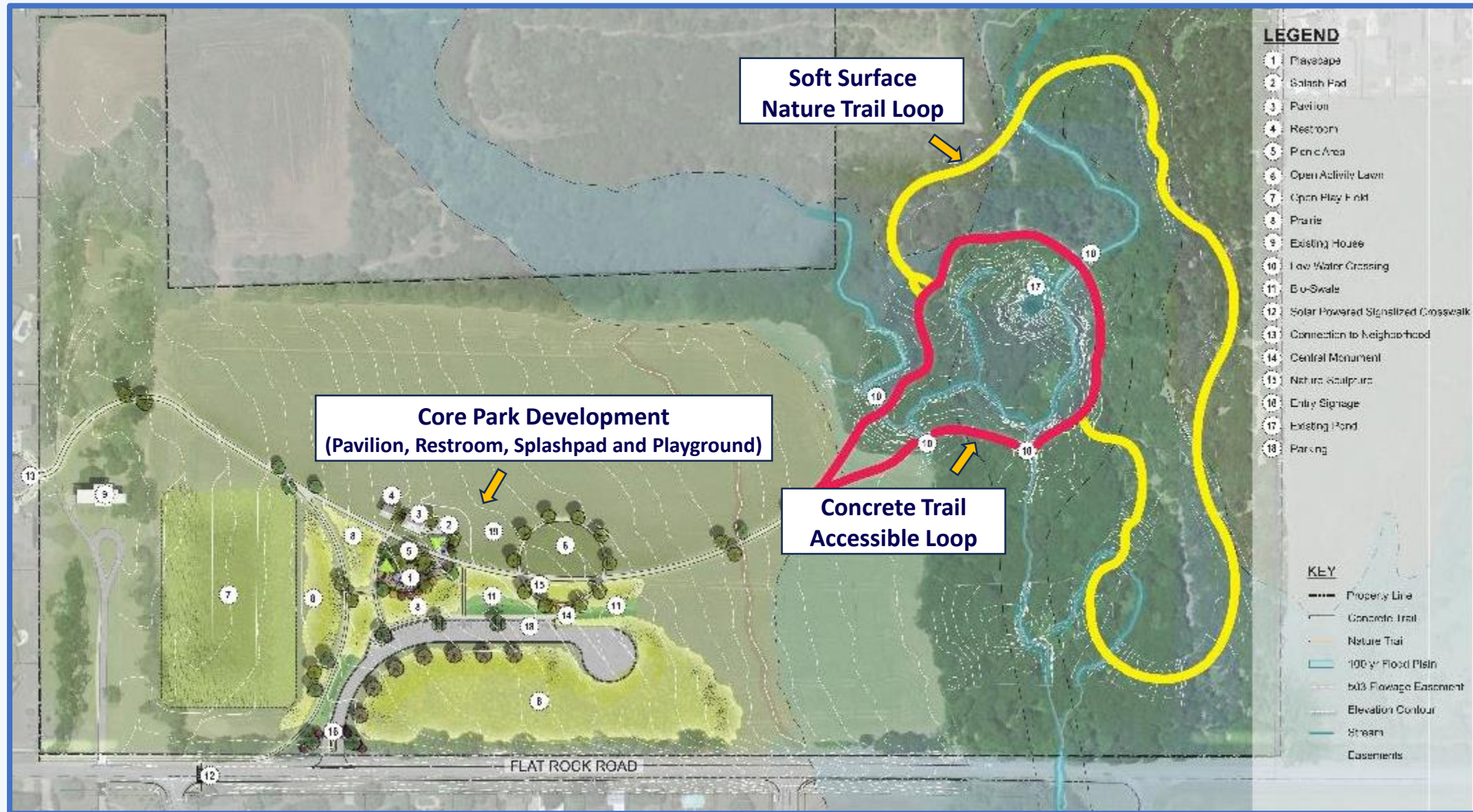
- provide ways to learn about parts of the natural world like birds and other wildlife, plants, or water systems
- complement nearby environmental education opportunities
- make sustainable components of park design visible or understandable

CHINA SPRING PARK - NEEDS ASSESSMENT MATRIX		
PRIORITY	AMENITY	VALUE
1	Trails	Passive Recreation; Active Recreation
1.1	Trails - paved - accessible & multi-use	
1.2	Trails - nature/hiking	
1.3	Trails - connect to larger network	
1.4	Trails - running/fitness	
2	Play areas	Active Recreation; Community
2.1	Play areas - all ages - toddler playground	
2.2	Play areas - all ages - teens/challenging	
2.3	Play areas - inclusive/accessible	
2.4	Play areas - shaded	
2.5	Play areas - natural play	
3	Picnic areas	Passive Recreation; Community
4	Multi-use sports fields	Active Recreation
5	Water play/splash pad	Active Recreation
6	Pavilions/group spaces	Community
7	Natural features & habitat	Natural Amenities; Passive Recreation
7.1	Natural features & habitat - preserve nature	
7.2	Natural features & habitat - watershed function	
7.3	Natural features & habitat - wildlife habitat	
7.4	Natural features & habitat - wildlife observation	
8	Roadway improvements	Safety
8.1	Sidewalks	
8.2	Pedestrian safety/traffic slowing	
8.3	Bike lanes	
8.4	Lighting at sidewalks and entries	
9	Restrooms	Community
10	Parking	Safety
11	Disc golf	Active Recreation
12	Skatepark and/or pump track	Active Recreation
13	Environmental education	Education
14	Event space	Community
15	Design with nature	Natural Amenities; Education
16	Community center	Community

*Aligning Values with  
Design Priorities*



# Site Map







## ***Building around Trails Native Vegetation***







## LEGEND

- ① Pavilion with Picnic Tables
- ② Restroom
- ③ Picnic Tables
- ④ Shade Sail
- ⑤ 2-5 yr. Play Area
- ⑥ 5-12 yr. Playscape
- ⑦ Splash Pad
- ⑧ Prairie
- ⑨ Decomposed Granite with Boulders
- ⑩ Bench





Bench



Trash Receptacle (Recycling Receptacle will have recycling logo)



Picnic Table



Restroom (note: stone type, siding color, and roof material are not representative)



Limestone Veneer



Pavilion











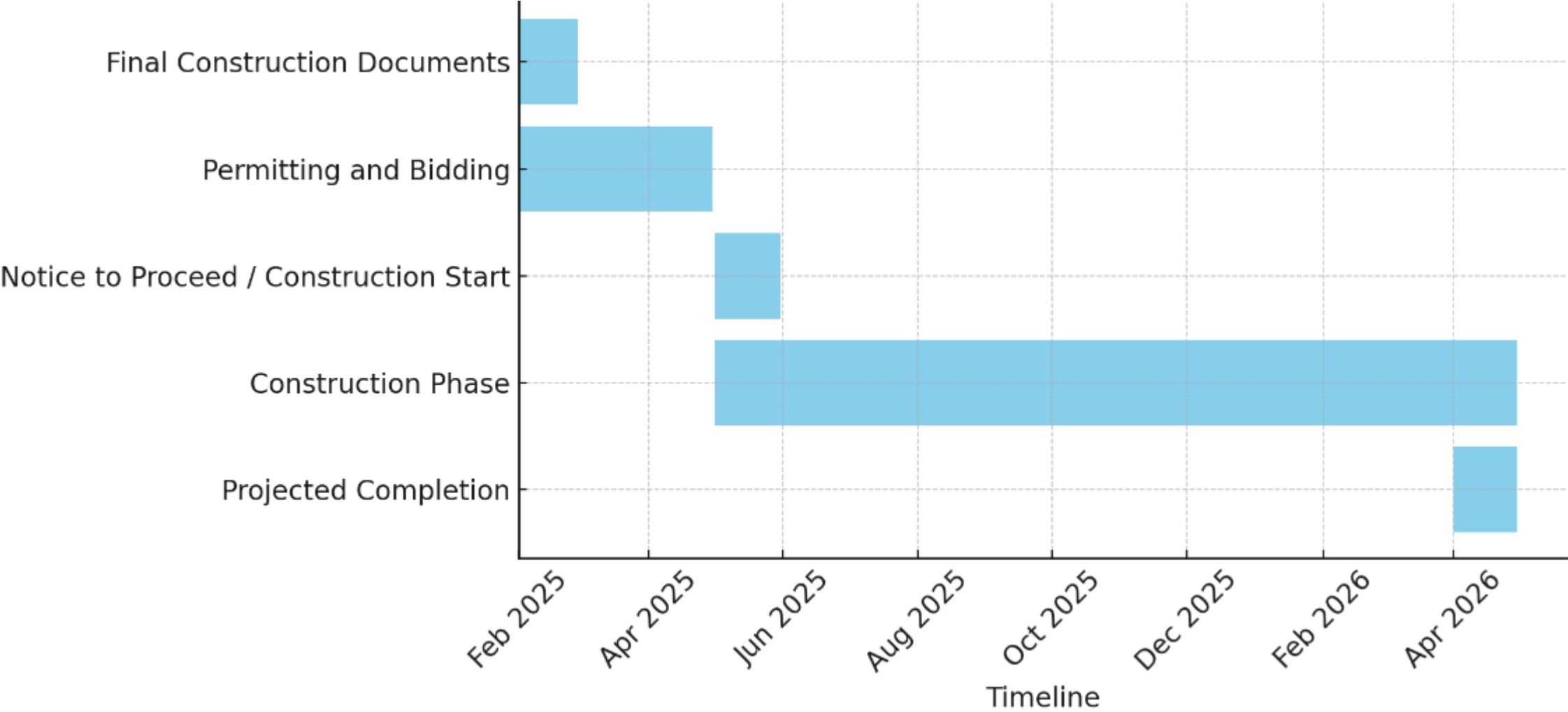








# Status and Timeline



# China Spring Park Project Summary / Next Steps

---

## Summary

---

- **February 2025** – Final Construction Documents
- **February - April 2025** – Permitting and Bidding
- **May 2025** – Notice to Proceed / Construction Start
- **Estimated Construction Timeline:** 9-12 months
- **Spring 2026** – Estimated Projected Completion

### Information and Updates:

Park Project website: [www.waco-texas.com/parks](http://www.waco-texas.com/parks)

Parks and Recreation Facebook and Instagram pages



# THANK YOU.

Questions: Jonathan Cook, Director of Parks & Recreation  
[jonathanc@wacotx.gov](mailto:jonathanc@wacotx.gov)