

The City of Waco

Floyd Casey Park Development

03.19.2024



Jonathan Cook, Director of Parks & Recreation

Connors Ladner & Margarita Padilla, Design Workshop



OVERVIEW

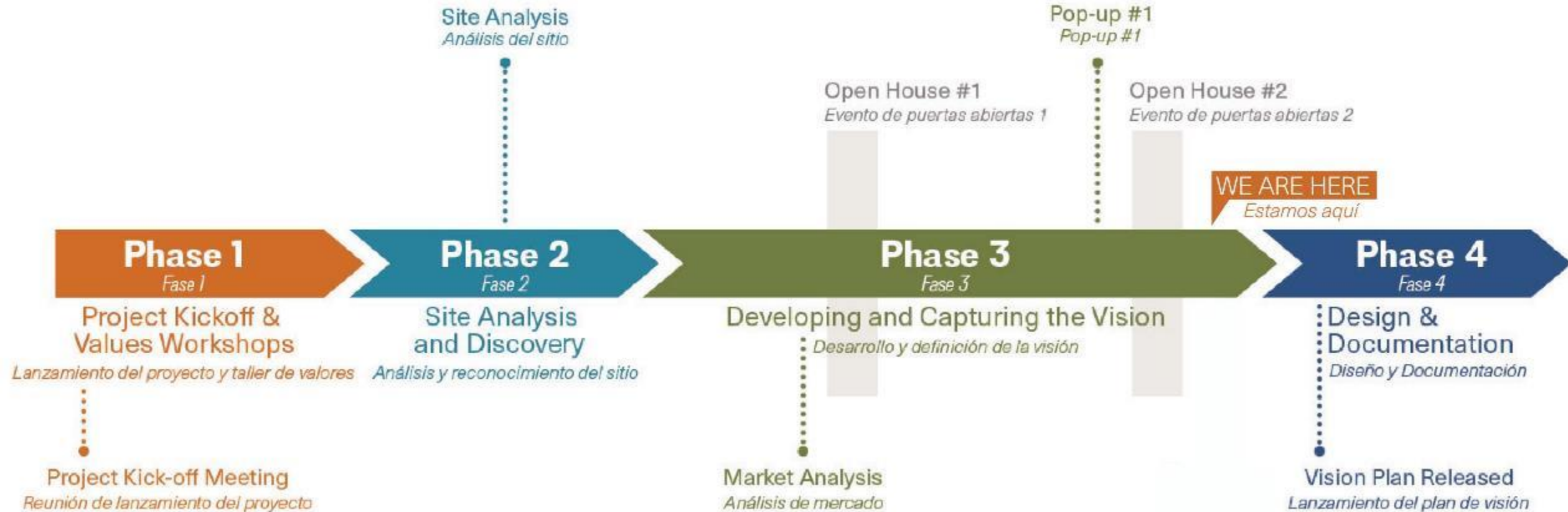
- Project Goals
- Project Recap
- Project Timeline
- Vision Presentation
- Heritage Trail Element

PROJECT GOALS

- Establish a new regional park
- Enhance connection to creek and nature and improve ecological health of the site
- Create Hub for metropolitan trail connection
- Upgrade the existing Track and Field Facility
- Opportunities to honor Hispanic Heritage within community



Project Process



PROJECT RECAP

- Project Design Kick off in June 2023
- First Open House in October 2023
- Public Survey received 250+ Responses
- Second Open House in December 2023
- Conceptual Vision Plan Completed March 2024



PROJECT TIMELINE

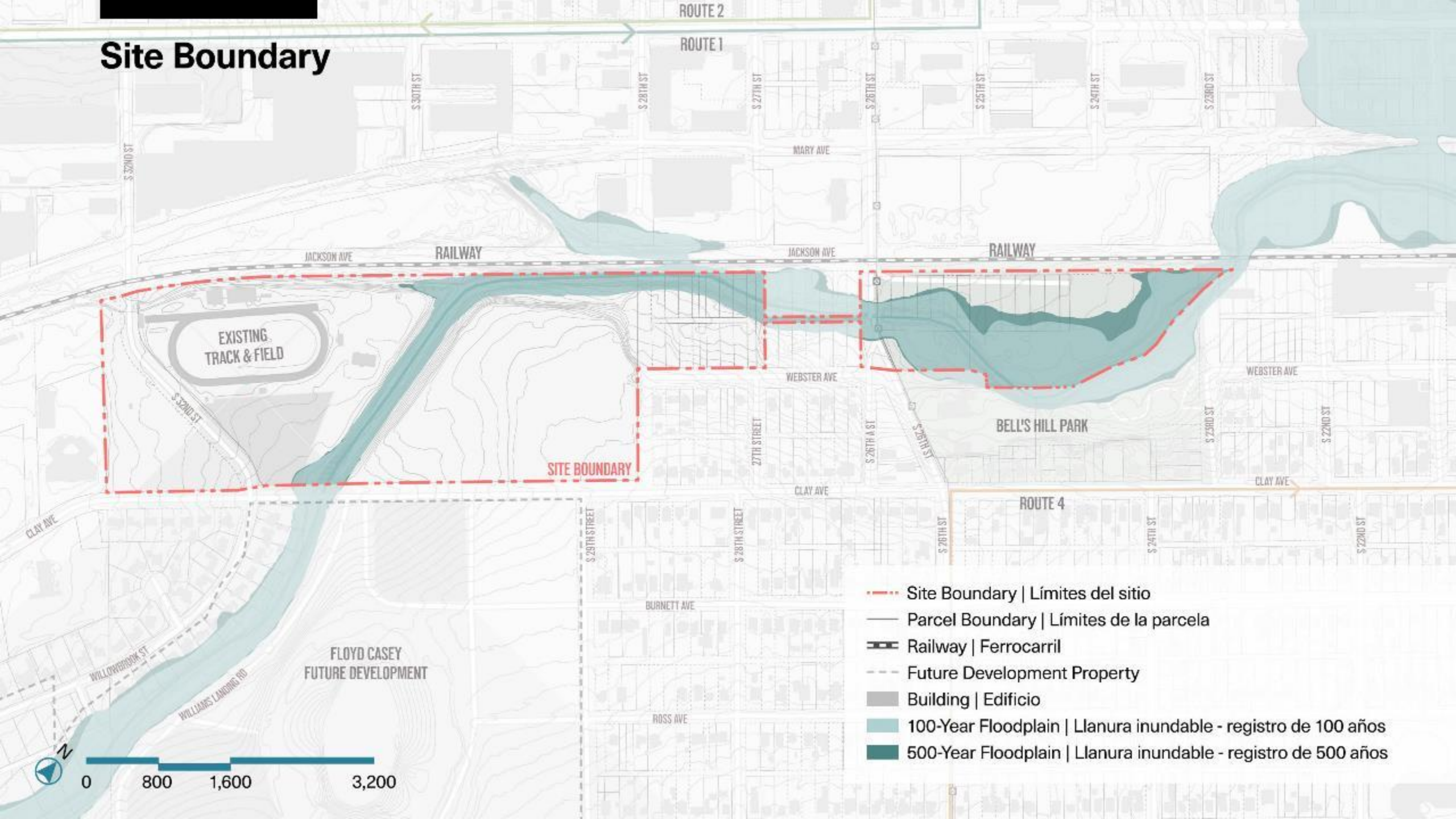
- **April – June 2024:** Completion of vision site plan and cost analysis
- **June – December 2024:** Schematic design and construction documents
- **Early 2025:** Bidding and groundbreaking

Funding

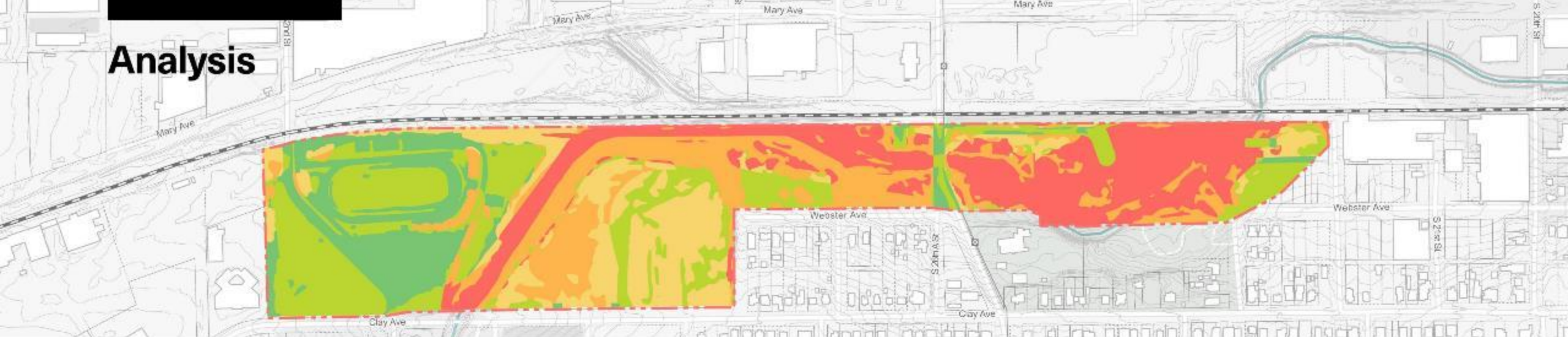
- \$22 million (CIP) for design and construction



Site Boundary



Analysis



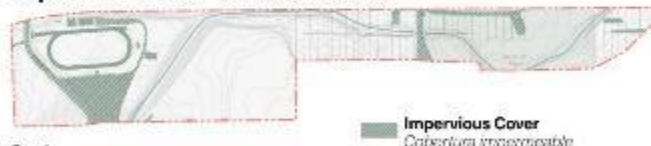
Suitability Analysis Map shows the most desirable areas of development based on the location of floodplains, drainage, existing impervious cover, tree canopy, soil, topography, and slope.



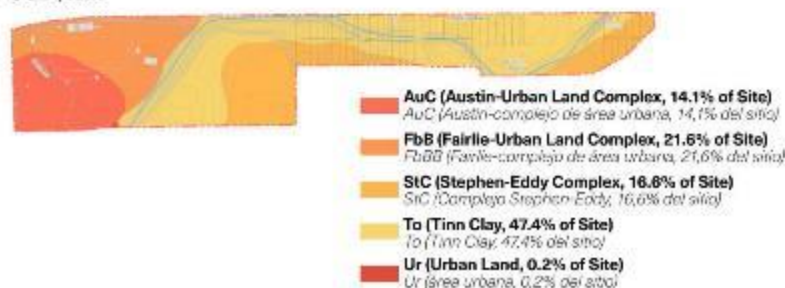
Floodplain | Llanura inundable



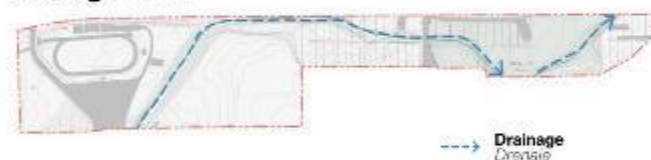
Impervious Cover | Cobertura impermeable



Soil | Suelo



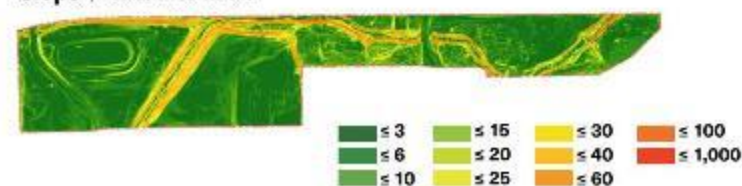
Drainage | Drenaje



Tree Canopy | Dosis arbórea



Slope | Inclinación del terreno



Suitability Analysis Structure

Estructura del análisis de viabilidad



HISTORY OF THE SITE

- 1950 – Baylor Stadium opens, which would later be known as Floyd Casey Stadium.
- 1967 – Track was built, and the facility was named after coaches Jack Patterson and Clyde Hart.
- 1992 – City of Waco and Waco ISD collaborated more on development. Waco summer track program inception.
- 2014 – Baylor moves from Floyd Casey site to McLane Stadium. City of Waco begins planning to transform and extend the public landscape around the Hart-Patterson Track Complex.



Goal Setting

What are the goals for the project?



Destination

- Establish the park as a must-visit **destination** within the City of Waco.
- Craft a **distinctive sense of place** through a thoughtfully built environment design.
- Create an **inclusive playground**.
- Consider the feasibility of introducing a Nature Center or similar educational space.
- Integrate rentable pavilions into the Parks and Recreation Department's reservation system.



Mobility

- Establish the site as a **central hub for metropolitan trail** connectivity.
- Design and implement **safe and accessible** connections to and from the park.
- Accommodate **diverse transportation modes** for people of all ages.
- Integrate seamless connections to the **public transit system**.



History and Culture

- Honor the **history of the neighborhood** by paying homage to culture and traditions.
- Distinguish the **park's identity** from other landmarks like the River Walk.
- Utilize **regional materials** to connect the park's aesthetic with Waco's identity.
- Establish the site as a unique trailhead and corridor, reflecting its **distinctive character**.
- Celebrate the site's historic **Olympic** and collegiate legacy through design elements.



Environment

- Engage with, and optimize the potential of **Waco Creek**, considering ecological significance.
- Develop strategies to mitigate **flooded events**, ensuring the park's resilience.
- Utilize the park as an opportunity to enhance the **visual appeal of trails and amenities**.
- Incorporate sustainable practices, leveraging the City's existing **sustainability office**.
- Seamlessly integrate the surrounding **wetlands** into the park's identity.



Inclusion

- Create an environment accessible to individuals with **diverse physical abilities**.
- Design areas that cater to people of **all ages**, from children to seniors.
- Incorporate elements from various cultures into the design environment to **celebrate diversity**.

Community

- Garner strong community support through **inclusive engagement processes**.
- Design programming that caters to the needs and interests of the **local neighborhood**.
- Foster **year-round activation** of the park, offering a variety of activities for all seasons.



Art

- Embrace **Waco's vibrant artistic scene** by integrating sculptures or murals.
- Explore formalized methods to support and facilitate **creative expressions**.



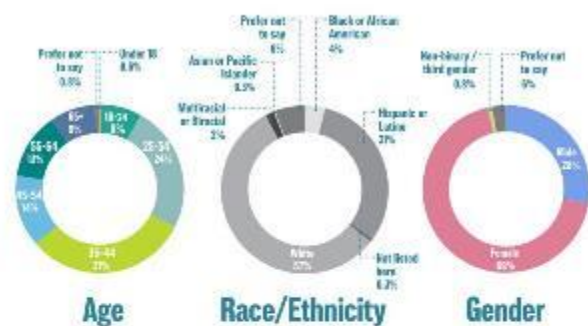
Economy

- Explore **commercial elements** within the park to **enhance vibrancy and activity**.
- Strategically plan for **revenue-generating** opportunities that contribute to the park's sustainability.

Public Online Survey Results

Future Park

370
Responses



Top 5 Additional Uses for the New Park



Top 5 Additional Sport Features for the New Park



69.4% visit parks in Waco more than several times per month



Biggest barriers to visiting a park by biking or walking

"I live too far from a park to walk or bike." 48%



The public wants ...

An inclusive park is ...

A safe place for families to enjoy. 81%

A mix of **diverse** and **equitable** active and passive outdoor activities for the entire Waco community to enjoy. 69%

Offer trails and greenways that expand access to all community members. 55%

A sense of place is like...



Great family-oriented activities for locals to engage in. 72%

The use of **local materials** and **native landscape**. 51%

By integrating work from **local artists** to create an all-encompassing culture for the community to enjoy. 47%

A park near the creek is like...



Opportunities for hiking and exploring for all ages and abilities. 64%

Maximize landscape along the creek edges to increase and protect wildlife habitat. 62%

Restore the creek edges and provide opportunities for visitors to interact with the creek. 58%





Vision

Floyd Casey Park

Public Engagement

COMMUNITY OPEN HOUSE #1 OCTOBER 26TH, 2023

30+ PARTICIPANTS

316 DOTS

COMMUNITY SURVEY

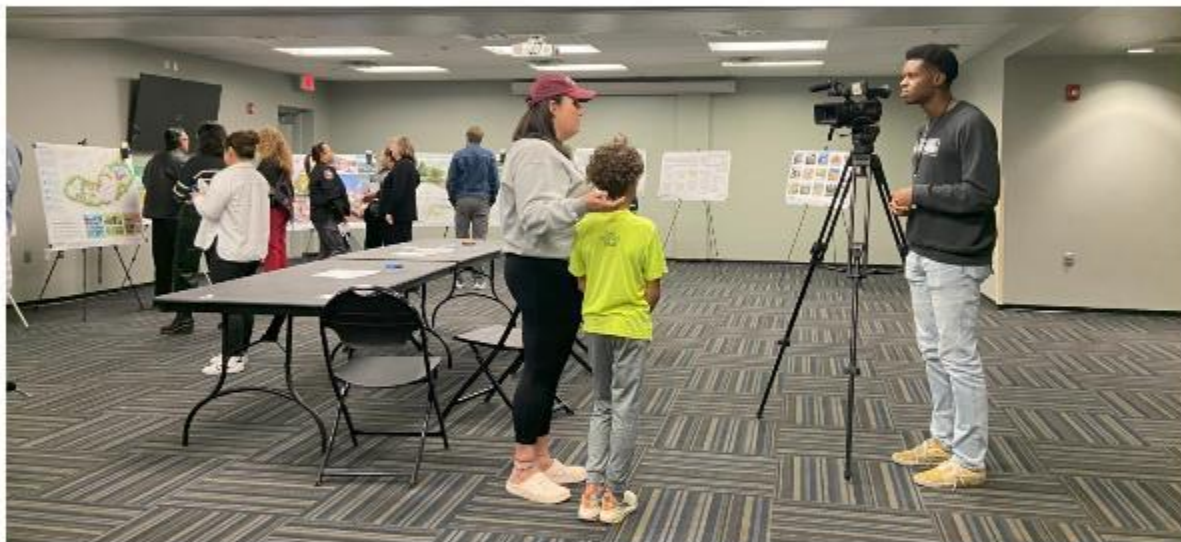


COMMUNITY OPEN HOUSE #2 DECEMBER 12TH, 2023

30+ PARTICIPANTS

142 DOTS

COMMUNITY SURVEY



Floyd Casey Park

Vision Plan | Framework



1.26 MILES
MAJOR TRAIL

1.24 MILES
SECONDARY TRAIL

850 SPACES
PARKING



Floyd Casey Park

Vision Plan



- | | | | | |
|---------------------------------------|-------------------------------------|--|-------------------------------------|-------------------------|
| 1 Parking Lot | 8 Pedestrian Bridge | 14 Main Gathering Plaza | 21 Great Lawn | 28 Raised Intersection |
| 2 Bus Parking Lot | 9 Stormwater Retention Pond | 15 Food Trucks | 22 Enhanced Practice Baseball Field | 29 Flex Lawn |
| 3 Track and Field | 10 Boardwalks | 16 Baseball Restroom and Gathering Space | 23 Low Water Crossing | 30 Stormwater Wetland |
| 4 Athlete Entry, Ticketing | 11 Water Play Restroom and Pavilion | 17 All Abilities Playground | 24 Trails | 31 Buffer |
| 5 Proposed Concessions, Visitor Entry | 12 Tennis/Pickle Ball Court | 18 Arrival Plaza and Water Play | 25 Creek Restoration and Wetlands | 32 Maintenance Entrance |
| 6 Existing Athletic Center | 13 Basketball/Futsal Court | 19 Promenade | 26 Native Open Fields | 33 Skate Park |
| 7 Overflow Parking | 14 Main Entrance | 20 Gathering Pavilion and Plaza | | |

Floyd Casey Park

Arrival Plaza



Concert/Movie Night



Climbing Wall



Splash Pad



Lawn



Food Truck Plaza



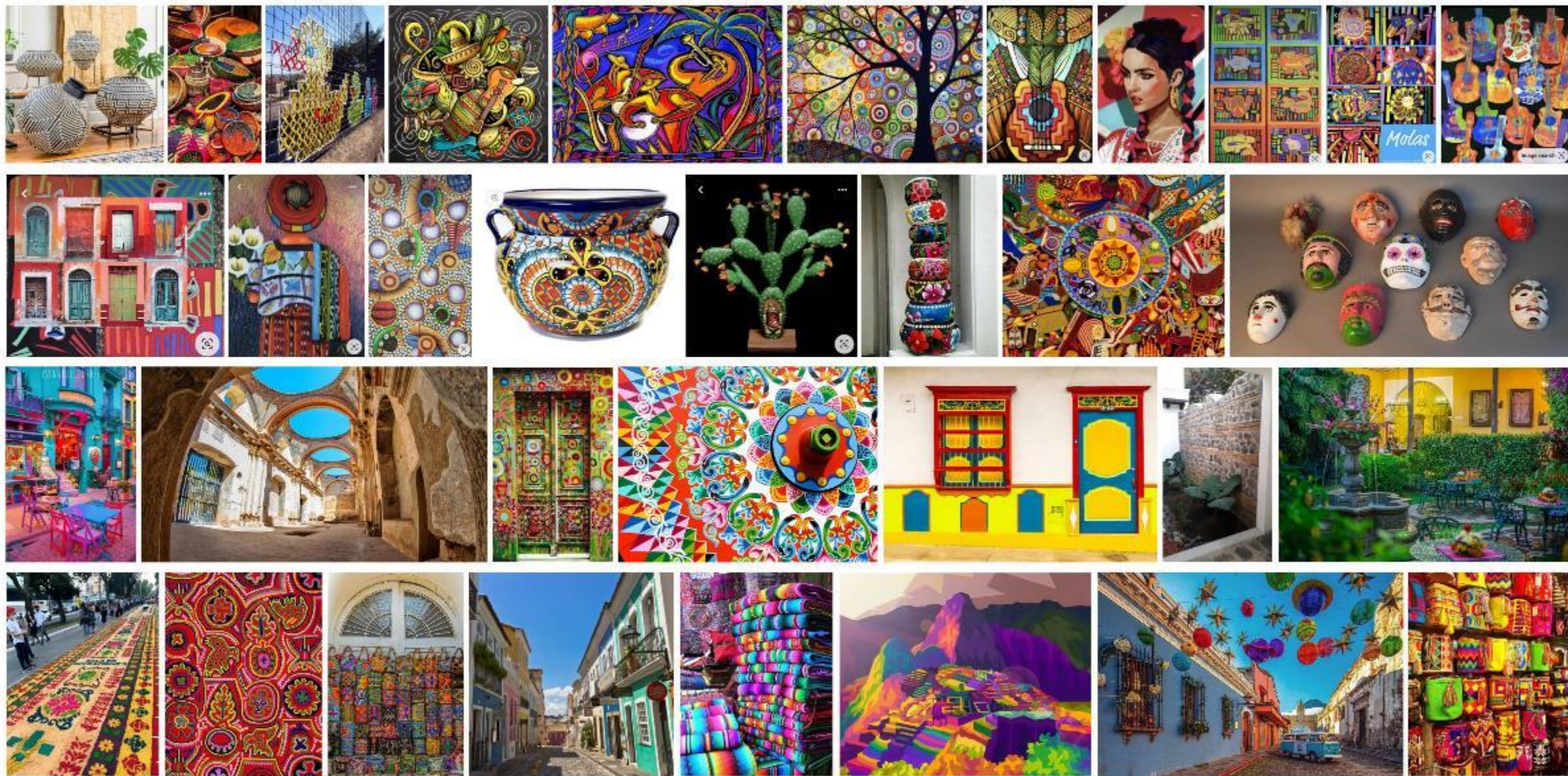
A young girl with curly blonde hair, wearing a grey t-shirt and blue jeans, is seated in a wheelchair on a red metal playground structure. She is smiling broadly, looking upwards. The structure has a red horizontal bar and a curved red frame. In the background, other children and adults are visible on a green rubber safety mat. A woman in a white shirt and blue pants is standing near a swing set. A boy in a blue shirt is sitting on a swing. Another boy in a grey shirt is standing near the swing set. A woman in a black shirt is standing near a fence. The background is filled with green trees and a white metal fence.

All Abilities Playground

- Inspiration
- Design Intention

All Abilities Playground

Inspiration



All Abilities Playground

Design Intention



Floyd Casey Park

All Abilities Playground



Musical Instrument



Shade Structure



Climbing Tower



Climbing Wall



Tactile Learning Wall



Slide



Floyd Casey Park

Vision Plan | Pedestrian Trail



MAJOR TRAIL (10') | LAKE



MAJOR TRAIL (10') | GATHERING PAVILION



Floyd Casey Park

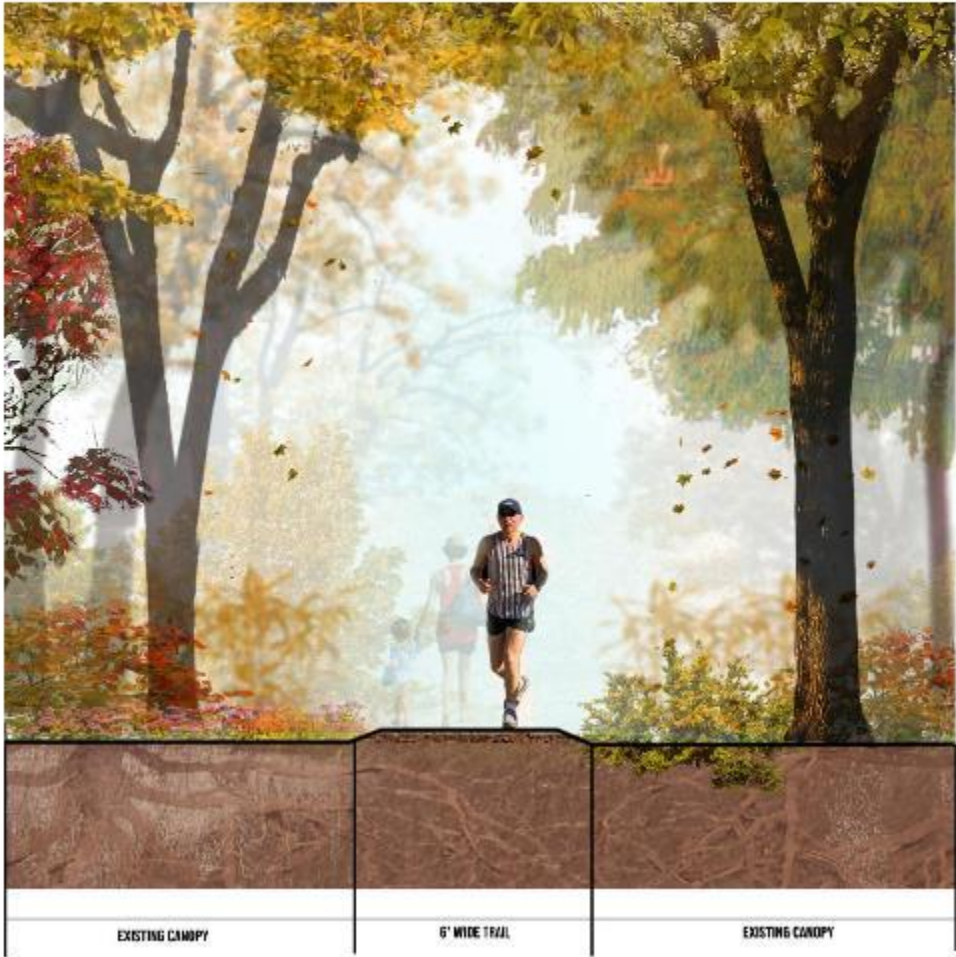
Vision Plan | Pedestrian Trail



MAJOR TRAIL (10') | LAWN

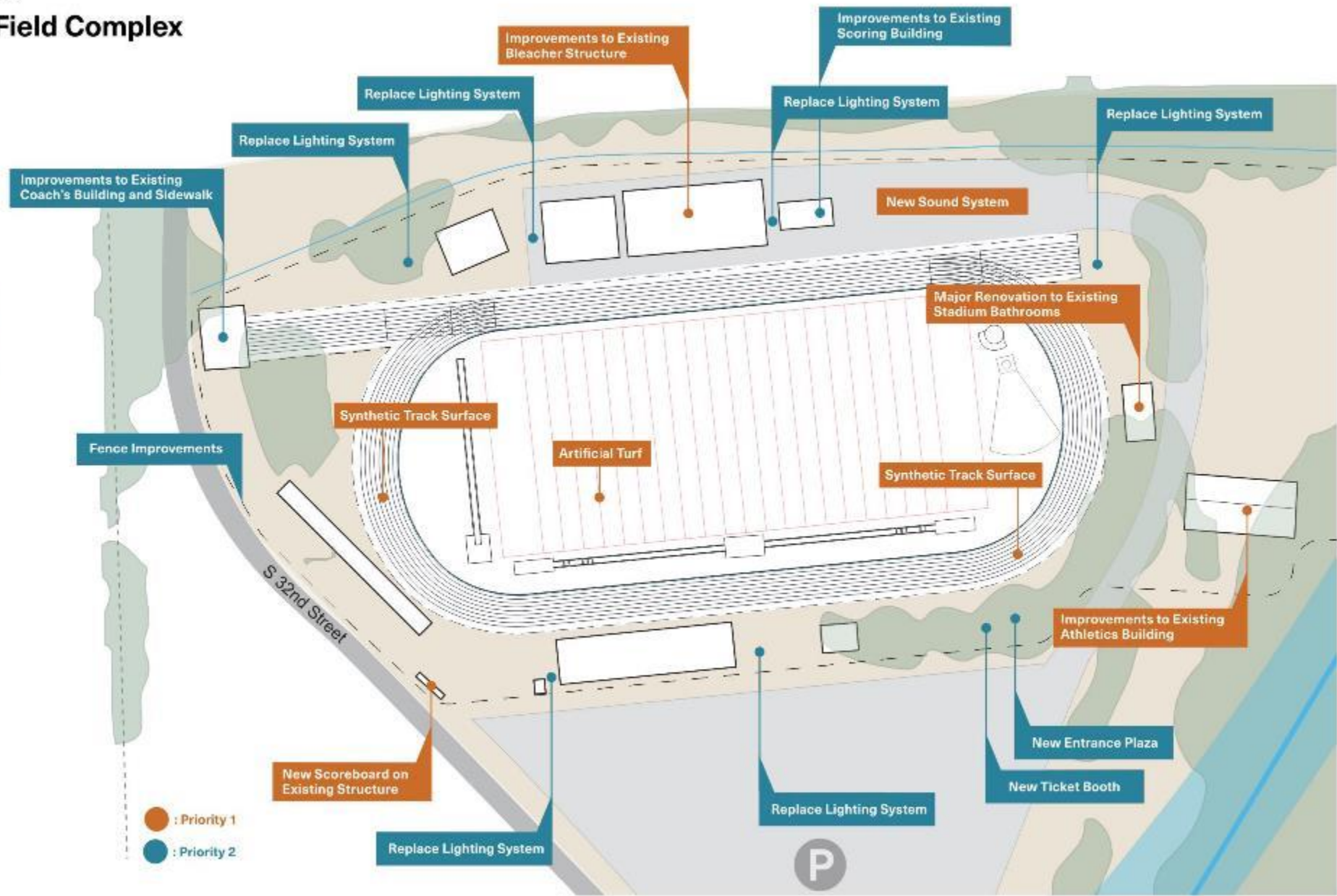
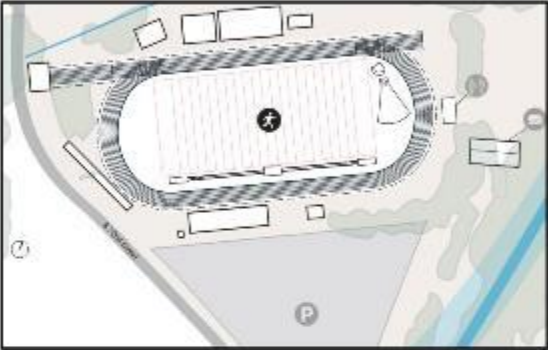


SECONDARY TRAIL (6') | WOODLAND



Floyd Casey Park

Architecture | Track and Field Complex



Floyd Casey Park

Great Lawn



Cultural Art



Playground



Lawn Furniture



Stage



Market



Floyd Casey Park

Stormwater Retention Pond



Pedestrian Trail



Pedestrian Bridge



Stormwater Retention Pond



Wetland



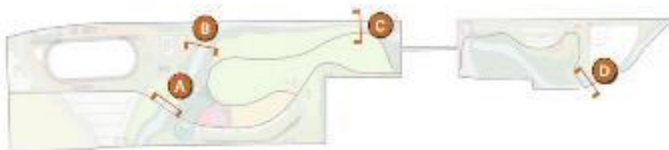
Parking Lot

Floyd Casey Park

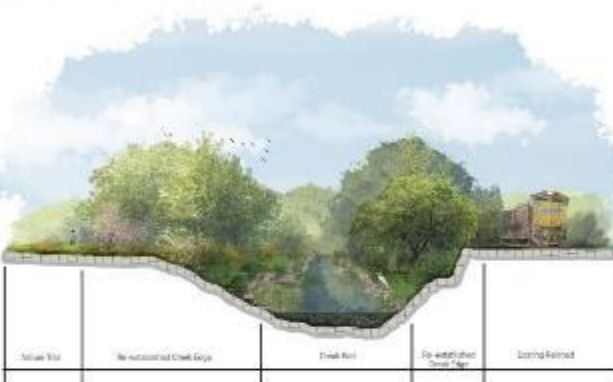
SECTION A



SECTION B



SECTION C



SECTION D





HISPANIC HERITAGE TRAIL ELEMENT

- South Waco Park is home to the South Waco Community Center which houses the Waco Hispanic Museum. This Museum showcases a vibrant historical display linking the Center and park to the Hispanic community
- Goal: Establishing connectivity between South Waco Community Center and the New Floyd Casey Park Development Project that honors the rich cultural history of the surrounding neighborhoods
- Ongoing review of construction and design options
- Identifying trail route
- Exploring authentic and timeless features along the trail to honor the Hispanic community

A large, stylized star graphic composed of several dark blue, curved segments arranged in a circular pattern, creating a star-like shape. The segments are slightly offset from each other, giving it a dynamic, layered appearance. The star is centered on the page and serves as a background for the text.

QUESTIONS?