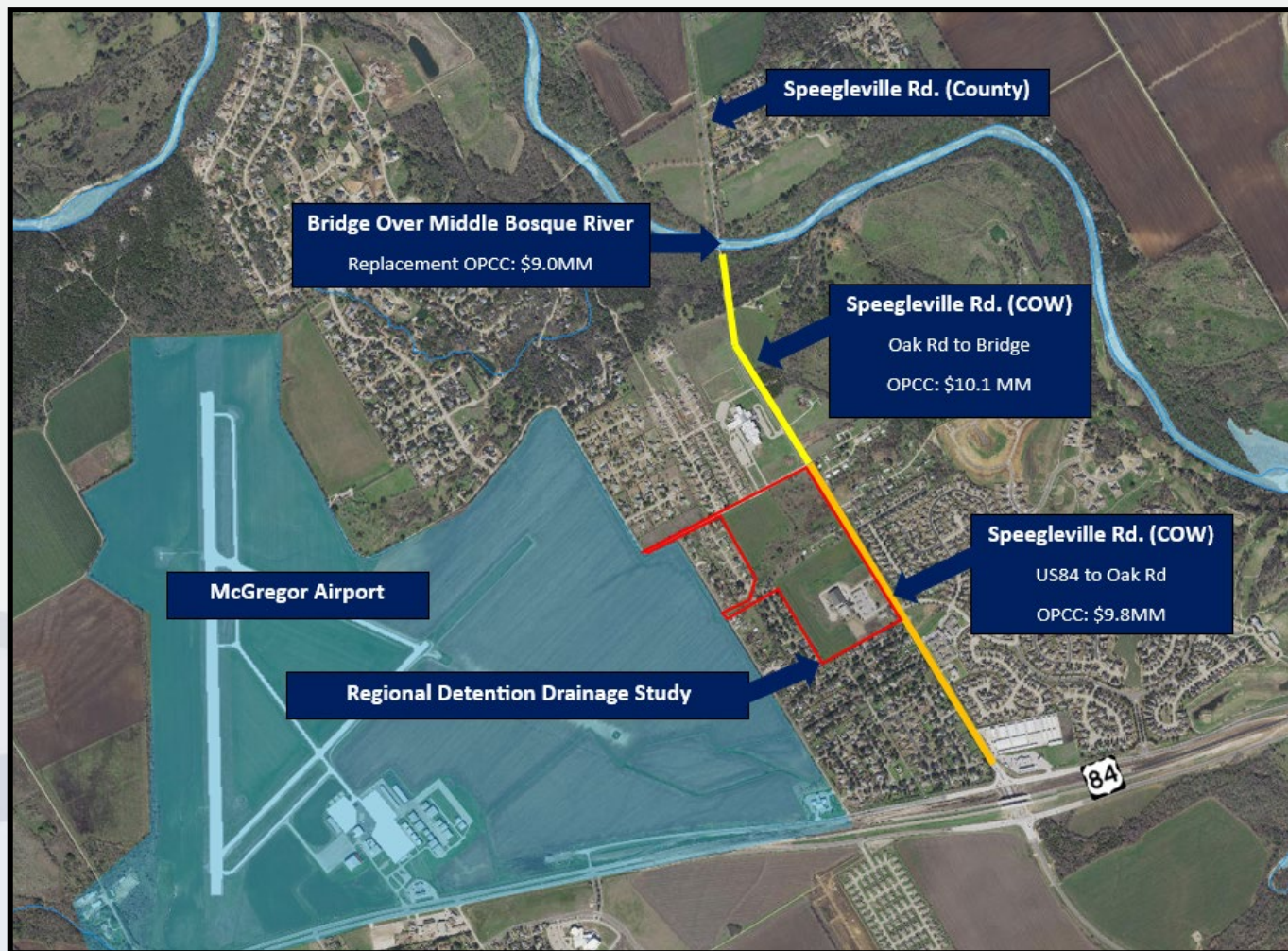


Public Works Department
Engineering Division

Speegleville Road Improvement Project(s)

City Council
September 5, 2023

Project Area



Connectivity

County

Designed and executed a construction project for Speegleville Road (Middle Bosque River to SH 6), including the widening of Speegleville Road leading up to the Middle Bosque River in anticipation for the proposed bridge project.



Widening of Speegleville Road to accommodate new bridge

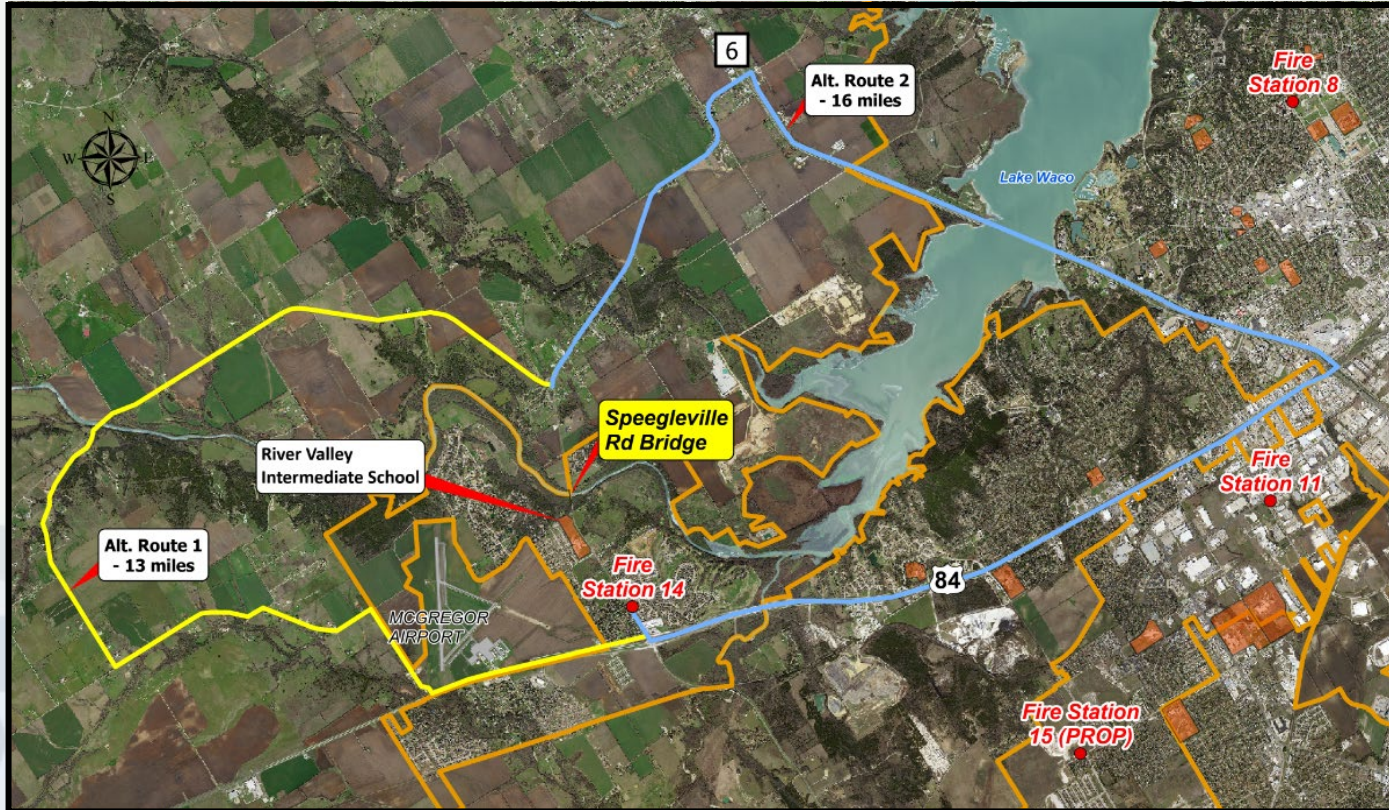
State

Recently completed a roadway project on US 84 which improved the US 84 and Speegleville Road intersection



Completed US 84 and Speegleville Road intersection

Connectivity



Schedule

Activity	Duration (months)	FY22-23		FY23-24		FY24-25		FY25-26		FY26-27	
		1H	2H	1H	2H	1H	2H	1H	2H	1H	2H
Schematic	12	Complete									
Acquisition	15		In progress								
Design	15										
Utility Relocates	12										
Construction	24							EE \$28.3M*			

* Does not include bridge

Critical Items

Environmental

- Completed: Waters of the US Delineation Report, Protected Species Habitat Assessment, Hazardous Material Report
- Next Step: Archeological Report (bridge design will impact scope)

Right-of-Way and Easement Acquisitions

- Surveys, field notes, and appraisals completed for 95% of parcels
- Next step: offers to property owners

Roadway Design (US84 to Bridge)

- Start September 2023 (following City Council approval)
- Next step: Topographic survey

Critical Items

Regional Detention Drainage Study

- Start September 2023 (following City Council approval)
- Will run concurrently to roadway design

Water and Wastewater Infrastructure

- Upgrades and/or replacements are needed
- Next Step: coordination with Water Utilities and potential developer

Speegleville Road Bridge Replacement Status

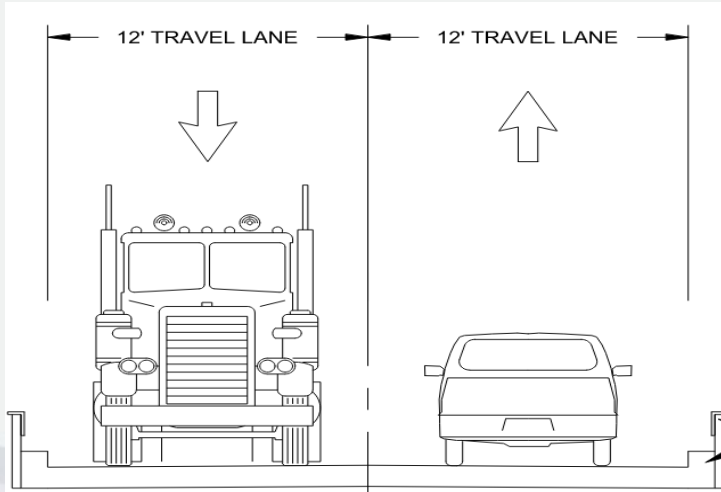
- COW staff submitted a joint design and construction grant application with the County to address safety and capacity needs of this bridge.
- Recently met with FHWA to get feedback on our grant application.
- Will be updating and resubmitting
- Cannot start design or construction until external funding is finalized

Funding Received to Date: \$2,608,000.00

Federal Funds: \$1,760,000.00 earmark in 2023



Middle Bosque Bridge Overview



Existing Bridge Configuration

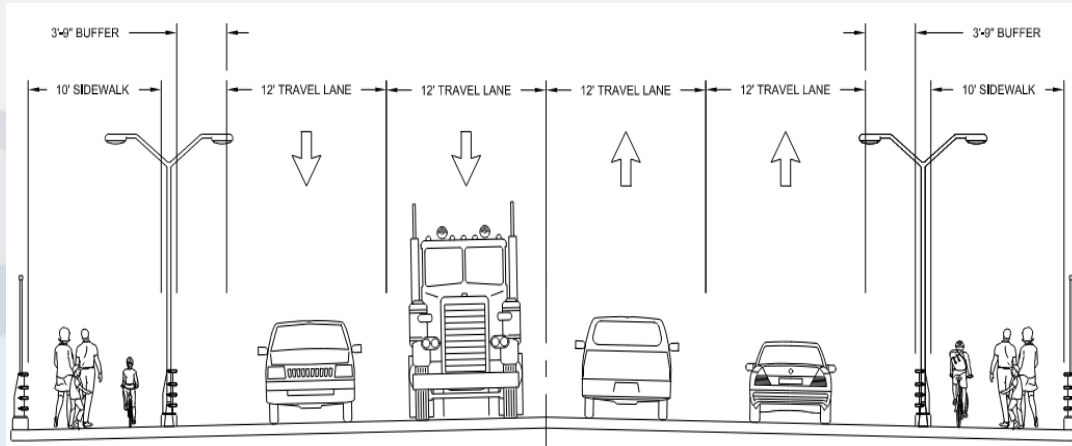
Existing Speegleville Bridge:

- Categorized as functionally obsolescent since it no longer meets current geometric standards
- Does not include pedestrian or cycling facilities
- Does not meet safety standards nor regional network demands

Middle Bosque Bridge Overview

Proposed Project:

- Replaces existing bridge with a four-lane bridge including shoulders and sidewalks
- Replaces the water and sewer lines
- Realigns the roadway on the south end of the bridge
- Addresses all TxDOT BRINSAP items



Proposed Bridge Configuration

QUESTIONS?



CITY OF WACO