

Public Art

135 Underpass decorative
lighting

May 2023

Fiona Bond

with

Amanda Dyer

Andrea La Vallée-Purvis

Morgan Eyring



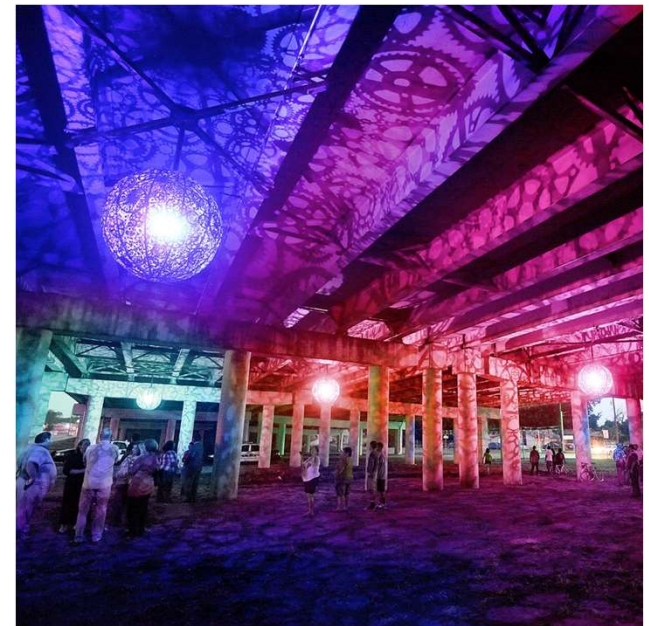
CREATIVE
WACO

Background

In 2017, City of Waco approved an aggregated package of decorative lighting features to be included in the I35 upgrade in downtown Waco. This included spherical sculptural lighting fixtures originally inspired by San Antonio's "Ballroom Luminosa" (pictured). A progress report was delivered in September 2022.

In fall of 2022, City of Waco contracted with Creative Waco to commission six (6) "illuminated ribbed metal spheres with embellishments that tell a story of Waco" to be installed with white LED lights in the I35 underpass between 4th and 5th streets.

Creative Waco and City of Waco worked together to issue an RFP and convene a panel to select artists and designs for the project.



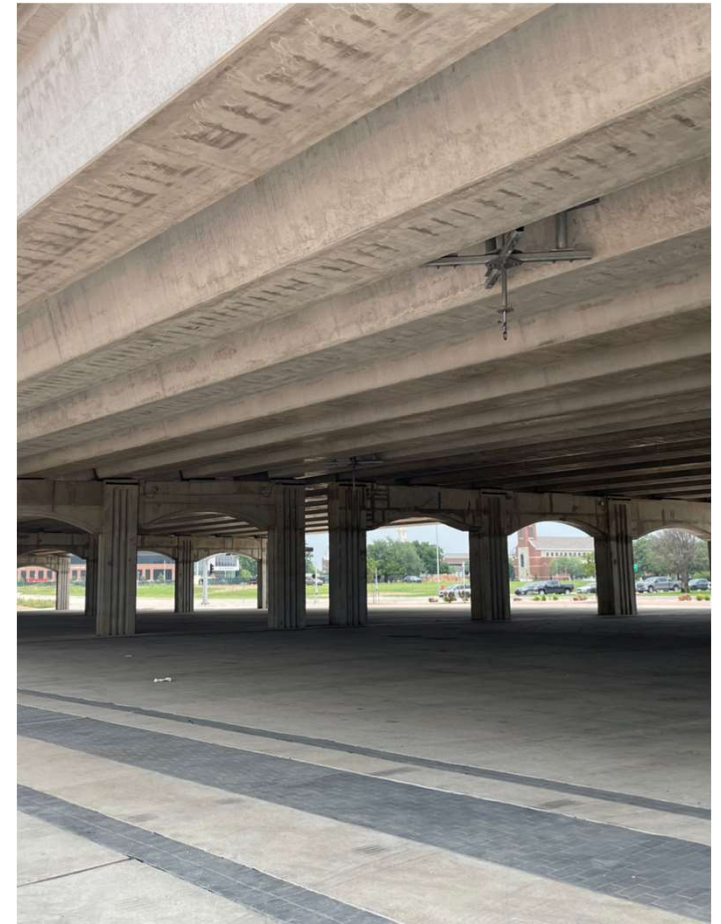
Design Objectives

The installation area is a pedestrian and cycle route gateway that connects Baylor and downtown Waco. It is home to Church Under the Bridge, and visible by traffic along the I35 feeder roads.

The RFP called for “Artworks that interpret Waco’s place in the world”.

Selection panel focused on designs that would translate well when lit up at night, casting shadows of different objects and shapes that characterize Waco.

The project is part of a wider effort to engage imaginative lighting elements to enhance safety, add visual appeal, and make the area more inviting.





Selection

Two of Waco's most experienced and accomplished artist/sculptors, Morgan Eyring and Andrea La Vallée-Purvis were selected by the panel to complete three sculptures each, welding designs specific to Waco's story onto 4' spherical steel armature supplied by TXDOT.



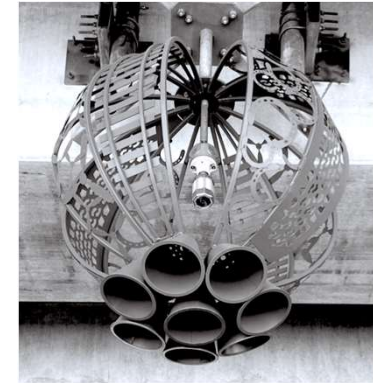
WILD FLORA

A design celebrating the beauty of local plant life, the valuable ecosystems of Lake Waco Wetlands and Cameron Park and those who preserve them.



WACO STRUCTURES

A playful collage of familiar bridges, buildings and other built structures that make Waco unique.



WACO MOVING FORWARD

The evolution of transportation that makes Waco a hub; from horseshoes, railroad, auto tires to propellers and rockets.

Designs: Morgan Eyring



LINES OF DIVERSITY

a geometric interpretation of creativity, diversity, connectivity and support among Waco's artisan small businesses.



BEAUTIFUL HABITAT

A representation of the meeting of the Brazos and Bosque Rivers with their proliferation of plants, wildlife, fish and birds.



POP CULTURE

A tribute to Waco's historic beverage industry, with a spotlight on Dr Pepper, referencing the brand's early bottle shape.

A

Designs: Andrea La Vallée-Purvis

Color Options



The artists recommended finishing the globes with a high durability vehicle paint to prevent corrosion and make the surface more light-responsive in the underpass.

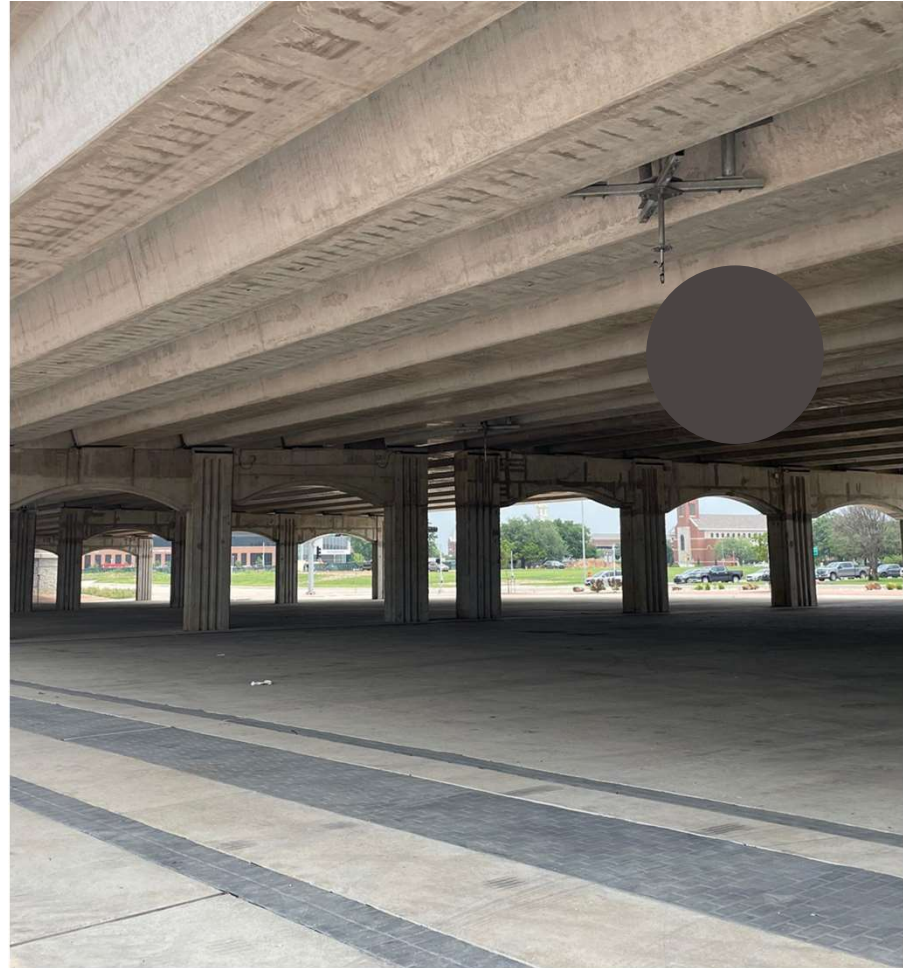
The paint used presents many potential options. However, in consultation with the artists we are recommending the following as best suited to the space, and the design objectives of the project:

1. Finishing the sculptures in a dark neutral (to mimic an unpainted metal finish similar to the San Antonio example)
2. A warm color palette option (sunset yellows)
3. A cool color palette option (bluebonnet)

Option 1: DARK NEUTRAL

Texas Steel Gray

For a low contrast color option, '**Texas Steel Gray**' achieves a uniform look across all the designs and would appear like a dark metal finish. This option resembles the images that were presented to Council from the San Antonio “Ballroom Luminosa” project.



Option 2: TEXAS SUNSET YELLOW

This example shows a warm monochromatic palette in the yellow color family inspired by the sunsets that can often be seen looking west through the underpass. This color selection would also add bold day-time contrast.



It is made up of 6 hues in the Yellow Family

Option 3: BLUEBONNET

This example shows a bluebonnet-inspired monochromatic palette that also evokes sky and water. This color selection would also add bold day-time contrast.



It is made up of 6 hues in the Blue Family

Questions



