



Waco City Council December 19, 2023

Salvation Army Update



Community Kitchen & Men's Shelter

Fresh Start Reintegration Program

Sally's House for Women, Children,
and Families

Salvation Army Warehouse



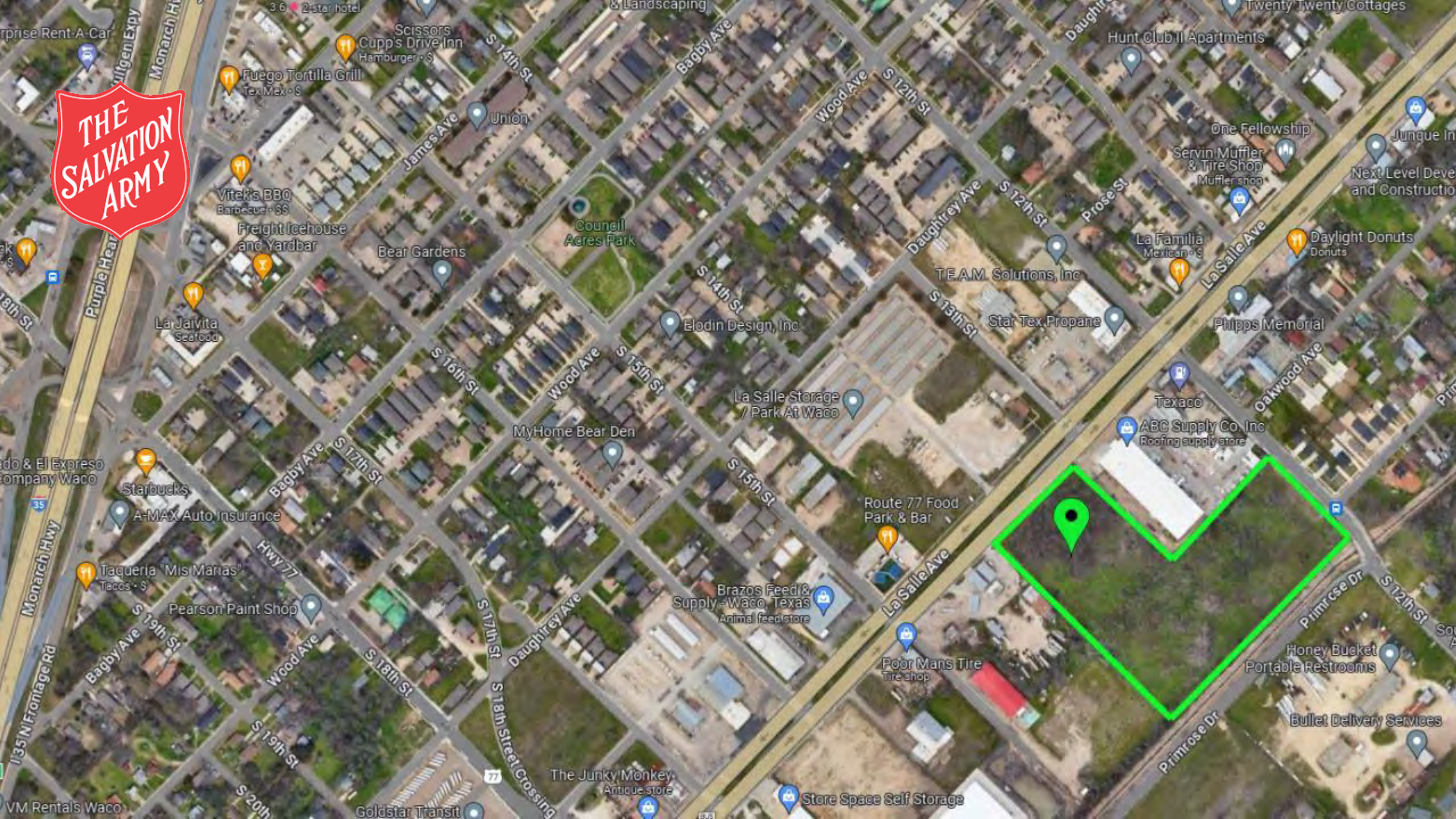


Downtown
Campus

Current Church

Future Home

Family Store & Social Services





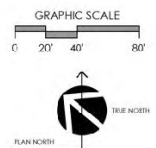
WACO, TEXAS

SITE DEVELOPMENT PLAN

SCHEMATIC DESIGN PROGRESS

rbdr PLLC • Architects
Waco, Texas

DOCUMENTS ARE INCOMPLETE
AND MAY NOT BE USED FOR
REGULATORY APPROVAL, PERMIT,
OR CONSTRUCTION
DAVID E. WRIGHT TX #16621





WACO, TEXAS

CORPS COMMUNITY CENTER

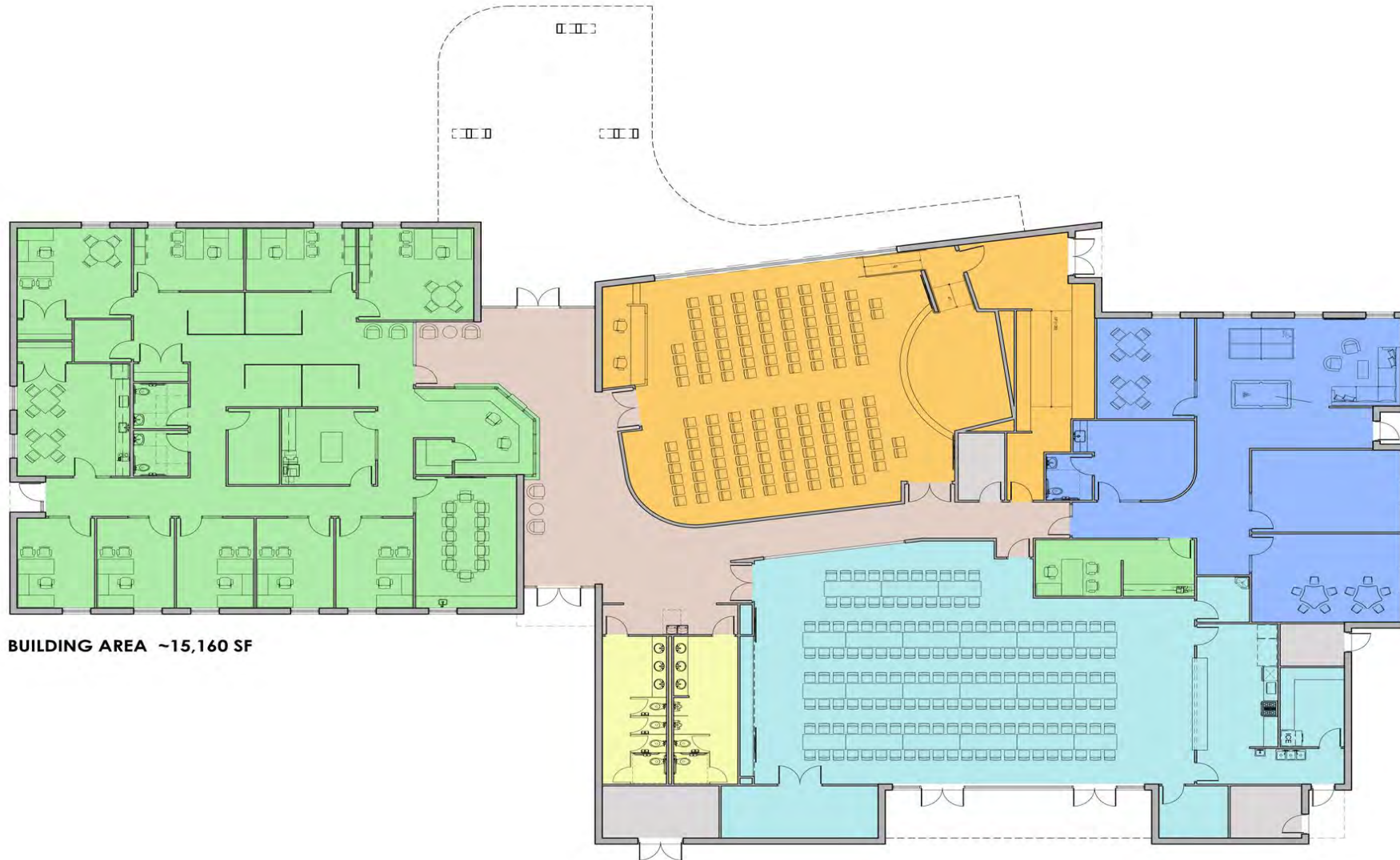
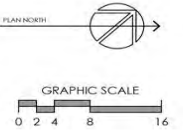
SCHEMATIC DESIGN PROGRESS

rbdr PLLC Architects
Waco Texas

DOCUMENTS ARE INCOMPLETE
AND MAY NOT BE USED FOR
REGULATORY APPROVAL, PERMIT,
OR CONSTRUCTION.
DAVID E. WRIGHT TX #16621

AREA KEY

- FELLOWSHIP HALL & ASSOCIATED PROGRAMMING
- COMMUNITY CENTER SPACES
- CHAPEL & ASSOCIATED PROGRAMMING
- COMMON AREAS
- RECEPTION / OFFICE / ASSOCIATED
- UTILITY SPACES
- PUBLIC RESTROOMS



BUILDING AREA ~15,160 SF



WACO, TEXAS

CORPS COMMUNITY CENTER SCHEMATIC DESIGN PROGRESS

rbdr PLLC • Architects
Waco, Texas

DOCUMENTS ARE INCOMPLETE
AND MAY NOT BE USED FOR
REGULATORY APPROVAL, PERMIT,
OR CONSTRUCTION.
DAVID L. WRIGHT, TX #16621



WACO, TEXAS

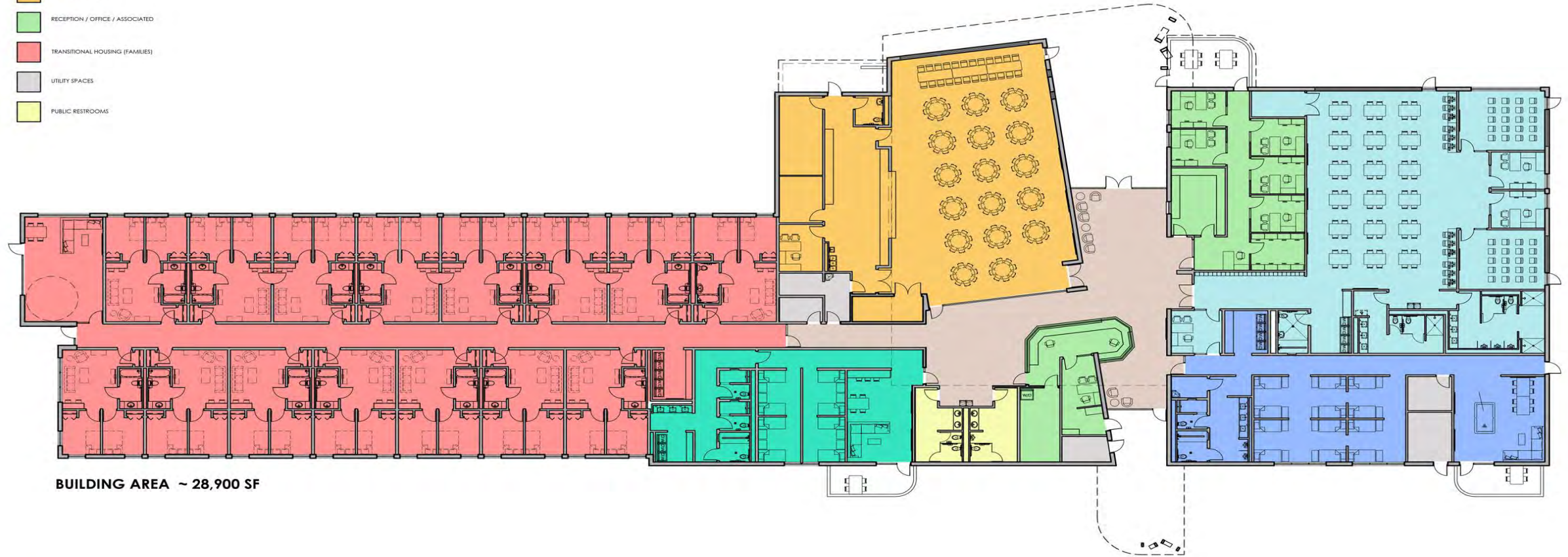
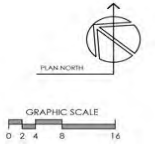
CENTER OF HOPE SCHEMATIC DESIGN PROGRESS

rbdr PLLC Architects
Waco, Texas

DOCUMENTS ARE INCOMPLETE
AND MAY NOT BE USED FOR
REGULATORY APPROVAL, PERMIT,
OR CONSTRUCTION.
DAVID E. WRIGHT, TX #16621

AREA KEY

- DAY ROOM & ASSOCIATED PROGRAMMING
- MEN'S DORM
- WOMEN'S DORM
- COMMON AREAS
- DINING & ASSOCIATED
- RECEPTION / OFFICE / ASSOCIATED
- TRANSITIONAL HOUSING (FAMILIES)
- UTILITY SPACES
- PUBLIC RESTROOMS



BUILDING AREA ~ 28,900 SF



WACO, TEXAS

CENTER OF HOPE SCHEMATIC DESIGN PROGRESS

rbdr PLLC - Architects
Waco Texas

DOCUMENTS ARE INCOMPLETE
AND MAY NOT BE USED FOR
REGULATORY APPROVAL, PERMIT,
OR CONSTRUCTION.
DAVID E. WRIGHT TX #16621

THE SALVATION ARMY - WACO
STATISTICAL BREAKDOWN October 2023

<u>FAMILY SERVICES</u>		
SERVICE	2022	2023
BAGS OF FOOD	138	242
NUMBER OF HOUSEHOLDS	455	917
SS VOUCHERS	263 HOUSEHOLDS	401 HOUSEHOLDS
UTILITY ASSISTANCE	37 HOUSEHOLDS	43 HOUSEHOLDS
VETERANS UTILITY ASSISTANCE	4 HOUSEHOLDS	2 HOUSEHOLDS
RENTAL ASSISTANCE	17 HOUSEHOLDS	5 HOUSEHOLDS
VETERAN RENTAL ASSISTANCE	2 HOUSEHOLDS	3 HOUSEHOLDS
NUMBER OF CASES	455	917
REFERRALS	59	1,513
INTERVIEWS	119	427
PHONE CALLS	1,182	2,759

EMERGENCY HOUSING GUESTS/TRANSIENTS

NUMBER OF INDIVIDUALS	31 MEN/16 WOMEN/5 CHILDREN	41 MEN/22 WOMEN/7 CHILDREN
NUMBER OF NIGHTS LODGED	377	571
NUMBER OF VETERANS	4	5
NUMBER OF NIGHTS LODGED - Vets	30	30
HYGIENE KITS	49	1
INTERVIEWS	165	58

<u>COMMUNITY KITCHEN</u>		
MEALS SERVED	2,675	2,350

Programs and Services

Corps Community Center

Youth Character Building

Programs

Musical Instruction

Women's Ministries

Men's Ministries

Community Care (Nursing

Home Visitation)

Veteran's Hospital (Monthly Program)

Religious Christian Worship Programs

Summer Day Camp

Fresh Start (Board of Prisons Pre-Release)

Community Kitchen

Daily Meal Service (Hot Meals)

Thanksgiving Day & Christmas

Day meals

Super Bowl Party for Homeless

Red Shield Lodge

Cooling Center (Summer)

Warming Center (Winter)

Sally's House

Family/Women Sheltering

Family/Children Life Skills

Thrifty Store/Family Store

Adult Rehab Center (Salvation Army Referrals)

Veteran's Programs

Emergency Disaster/Canteen & Vol Teams

Disaster Sheltering

Social Services

Utility Assistance

Rental Assistance

Food Pantry

Clothing Vouchers

Emergency Hygiene Kits

Furniture Vouchers

Comfort Kits

Case Management

Client Interviews/Referrals

Coordinated Entry Assessments

Christmas

Corporate Angel Tree

Adopt-a-Family

Toys for Tots

Christmas Prison Ministry

(Gatesville Women's Prison)

Residential Camp

Youth Summer Camp

Women's Retreat

Men's Camp

Older Adult Camp



BUILDING HOPE:

Our past remembered, our vision renewed

CAMPAIGN PROJECT	TOTAL
Center of Hope Construction	\$18,370,000
Endowment	\$1,330,000
Capital Campaign Expenses <i>(3.33% of total campaign goal)</i>	\$300,000
Total Campaign	\$20,000,000
FUNDS SECURED	
Sale of Booth Gardens	\$4,936,561
Sale of Army properties	\$3,800,000
Donations and Other Sources	\$2,189,690
Total Funds Secured	\$10,926,251
REMAINING TO BE RAISED FOR CAMPAIGN	\$9,073,749

- ✓ Emergency Housing for up to 100 individuals
- ✓ 15 Apartments dedicated to families
- ✓ Dedicated Veteran beds and services
- ✓ 24/7 Day center for homeless (access to showers and laundry)
- ✓ Single location for caseworker access
- ✓ Space for physical and mental care resource partners
- ✓ Dining hall for meals
- ✓ Classes to promote confidence and self-sufficiency



BUILDING HOPE:

Our past remembered, our vision renewed