



WACO
FAMILY
MEDICINE



Report

I. History & Vision

II. Services

III. Physician Training

IV. Solving National Problems Locally

V. Building for the Future



Waco Family Medicine History

1924: City of Waco contracted with
Providence Sanatorium

1942: Public Health Department





Waco Family Medicine History

1965-69 Shortages

- Average age of physician was 51
- 1 MD / 1,200 people

City & County leadership, Medical Society, and Hospitals worked together to form MCMERF

- shortage of physicians
- inadequate services for the indigent population
- inadequate acute care
- financial burden of free care delivered in the hospital ERs





Today's Vision Statement

To improve the wellness of the underserved and vulnerable residents of the Heart of Texas by providing effective access to high quality comprehensive primary health care; and by educating tomorrow's Family Physicians and health care professionals.

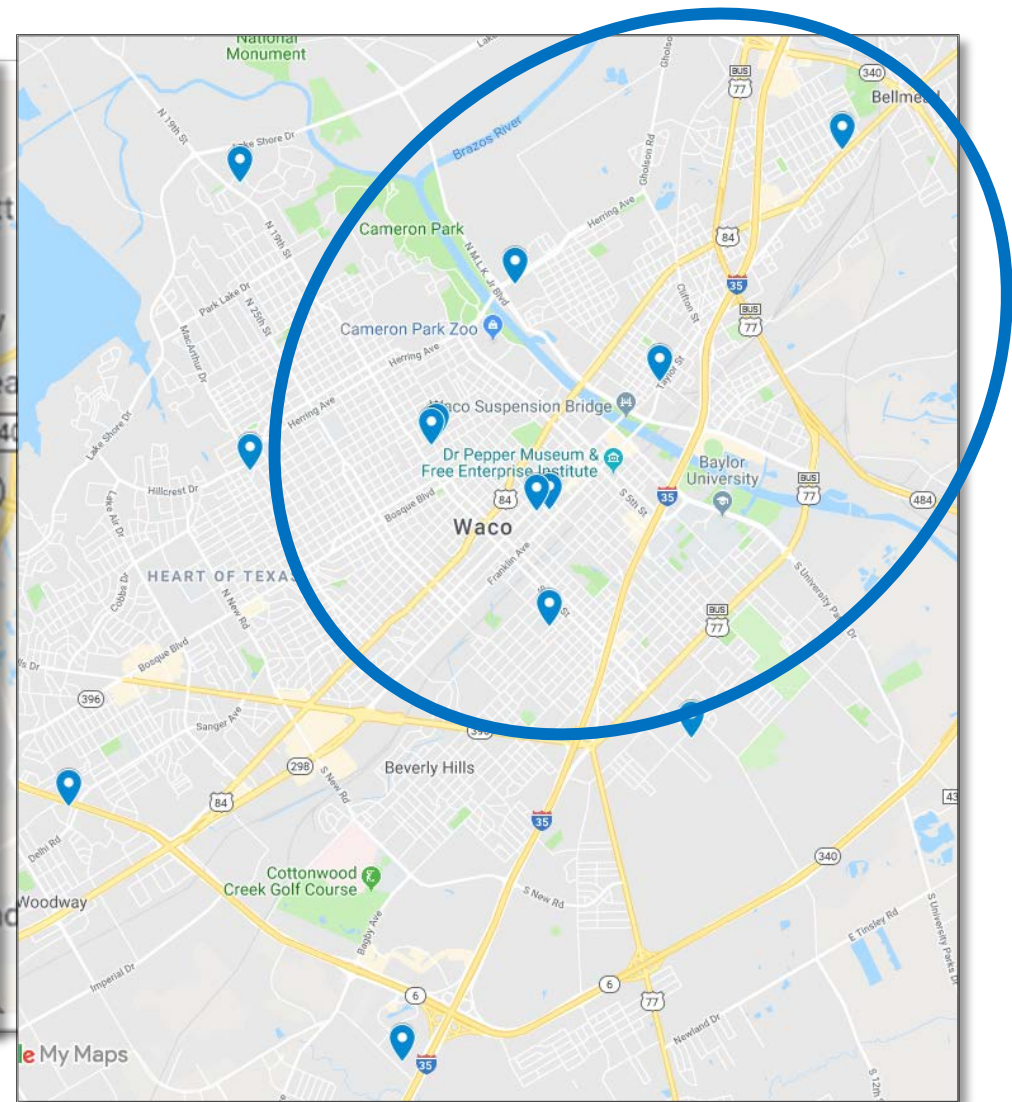
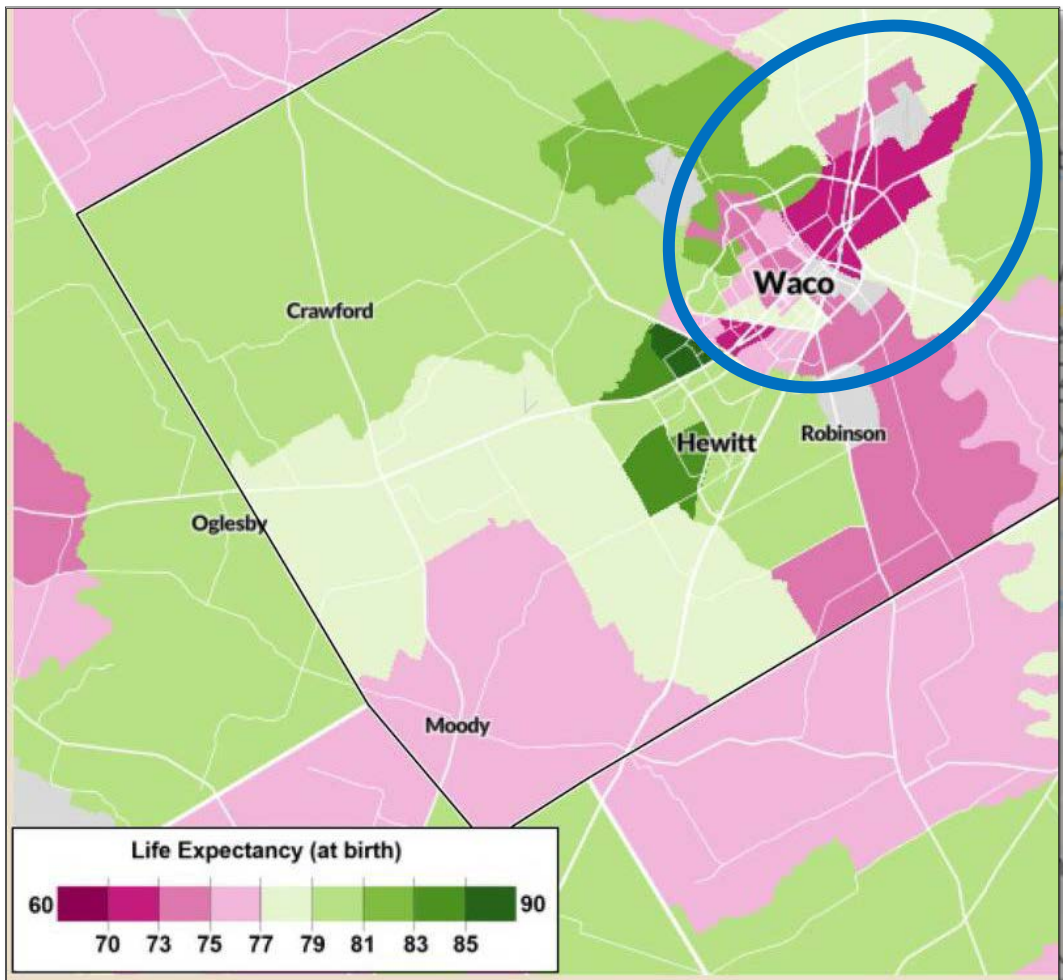


Center Services

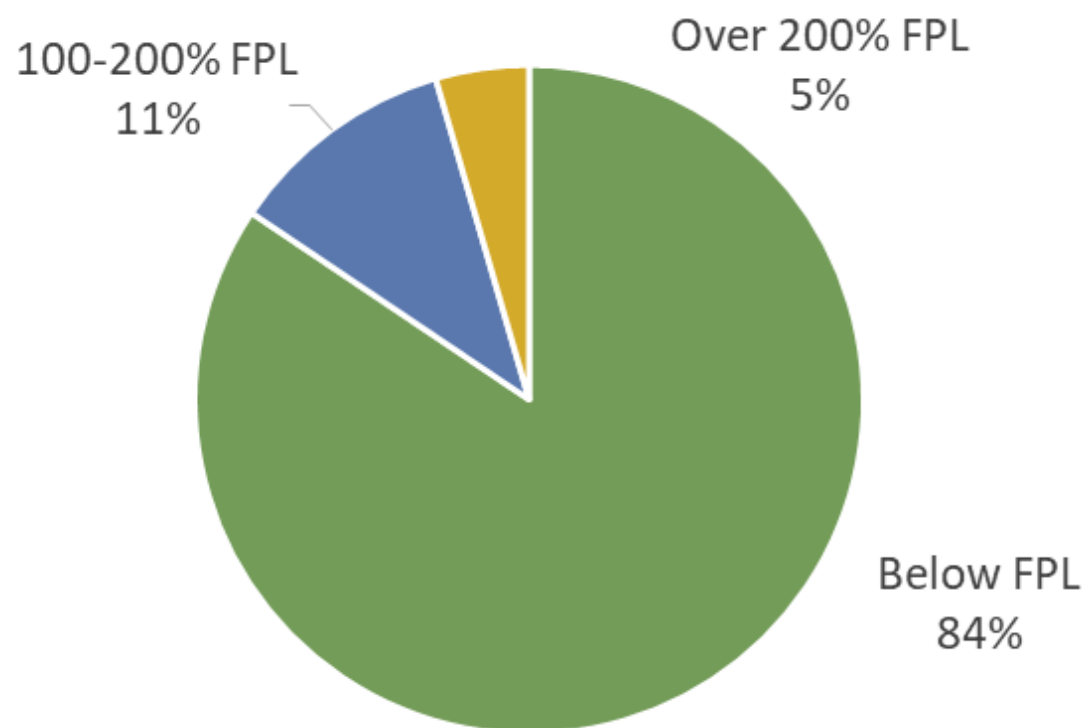


- Primary Care: 14 sites
- Dental: 4 sites
- Mental Health: 9 sites
- Maternity Care: 9 sites
- Hospital inpatient care
- Pharmacy
- Lab
- Radiology
- Eligibility





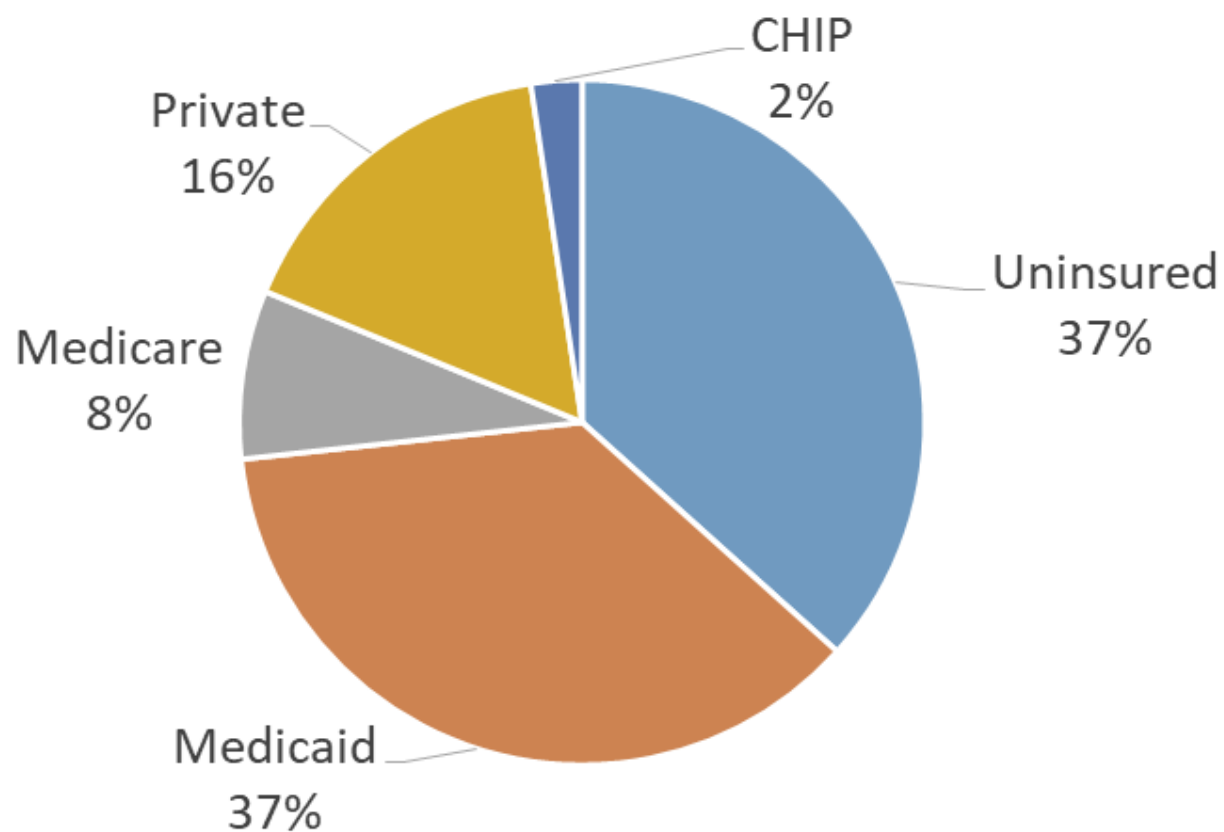
Patients by Income



Unduplicated Patients: 58,850



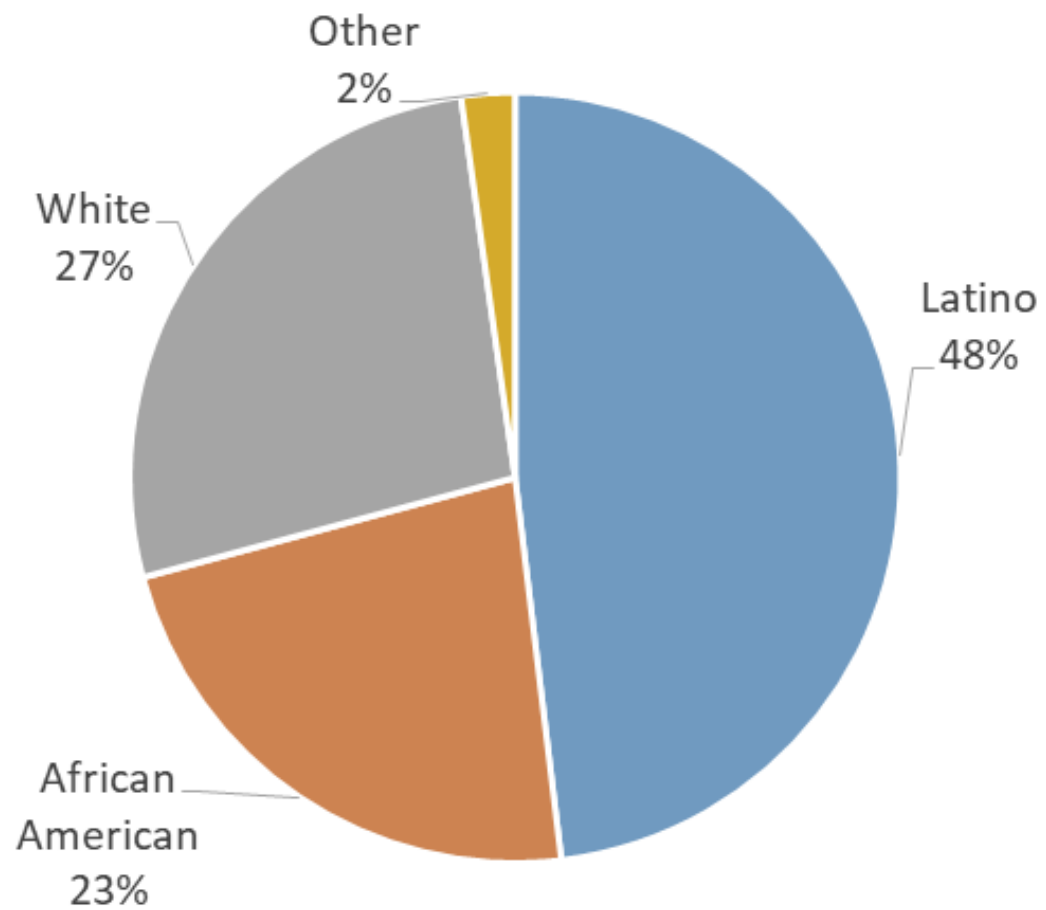
Patients by Insurance



Encounters: 207,088



Patients by Race



Physician Training



Family Medicine Residency

36 residents

50 year history

Fellowships

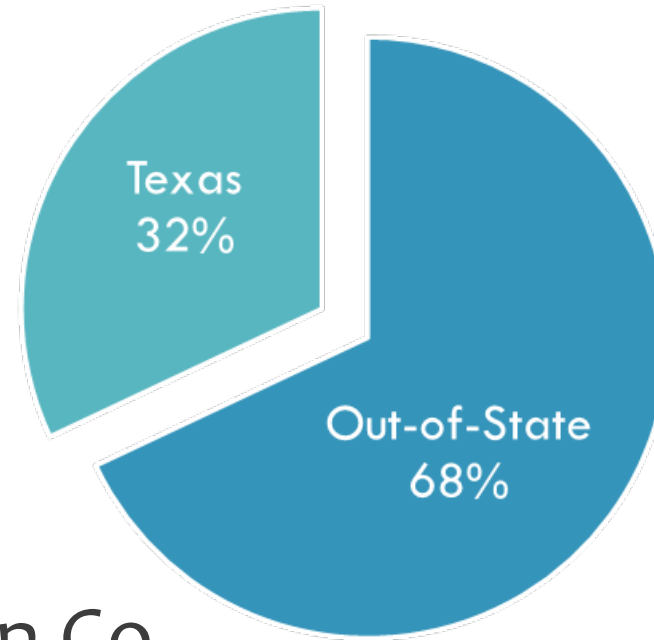
Hospice & Palliative Medicine

Clinical Informatics

Sports Medicine

Physician Training

- Over 800 applicants / year
- National ranking: top 2%
- Family physicians in McLennan Co
81% are graduates
- 100% Board Pass Rate
- Rich contributions to research

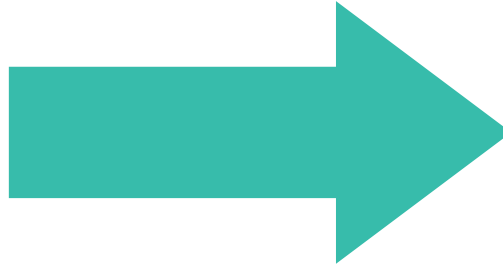


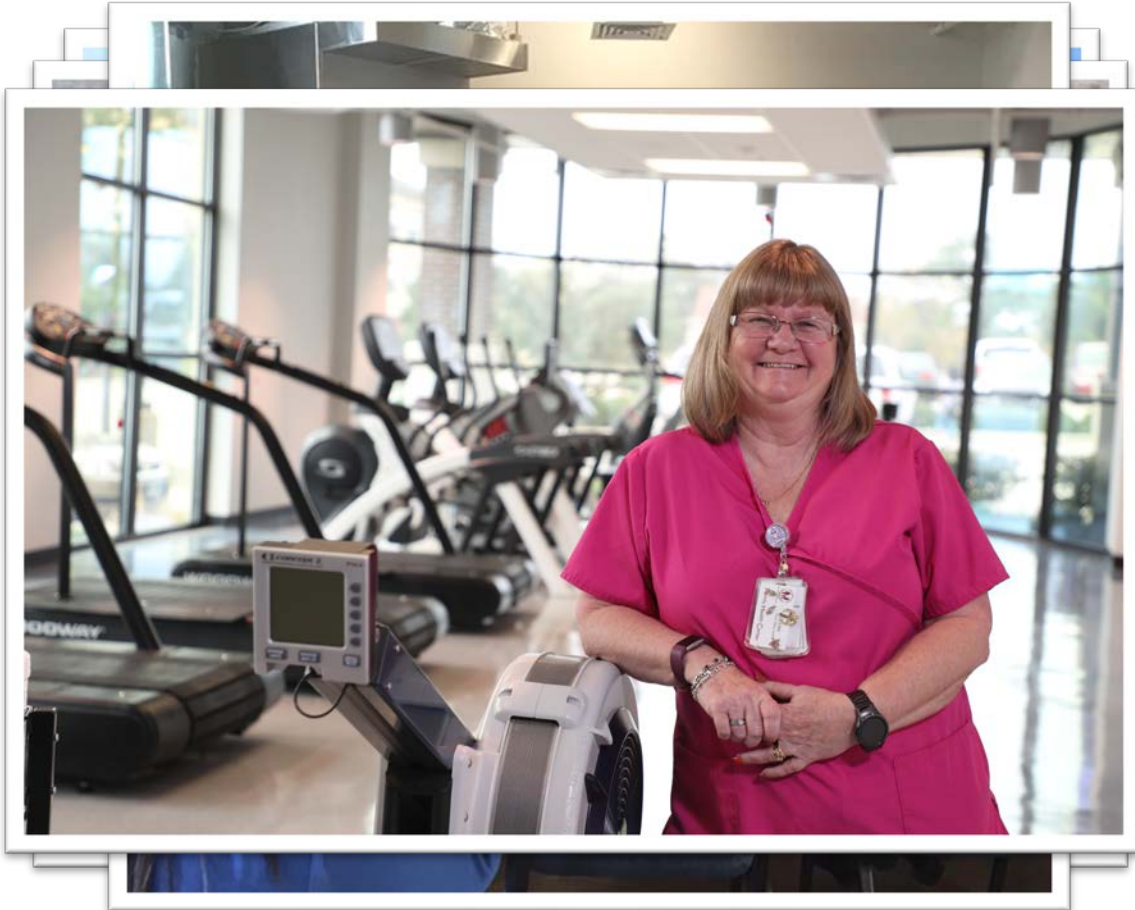
Solving National Problems Locally





Wellness & Prevention





- Wellness Center
- Prescription Produce
- Medical Legal Partnership
- Urban Gardening
- Integrated behavioral health
- Reach out and Read



- Five Transformation Waco Campuses
- Five La Vega ISD Campuses

Calvary Baptist Church



Iglesia Fuente
en el Desierto

18th Street

Colcord Ave

Providence Drive

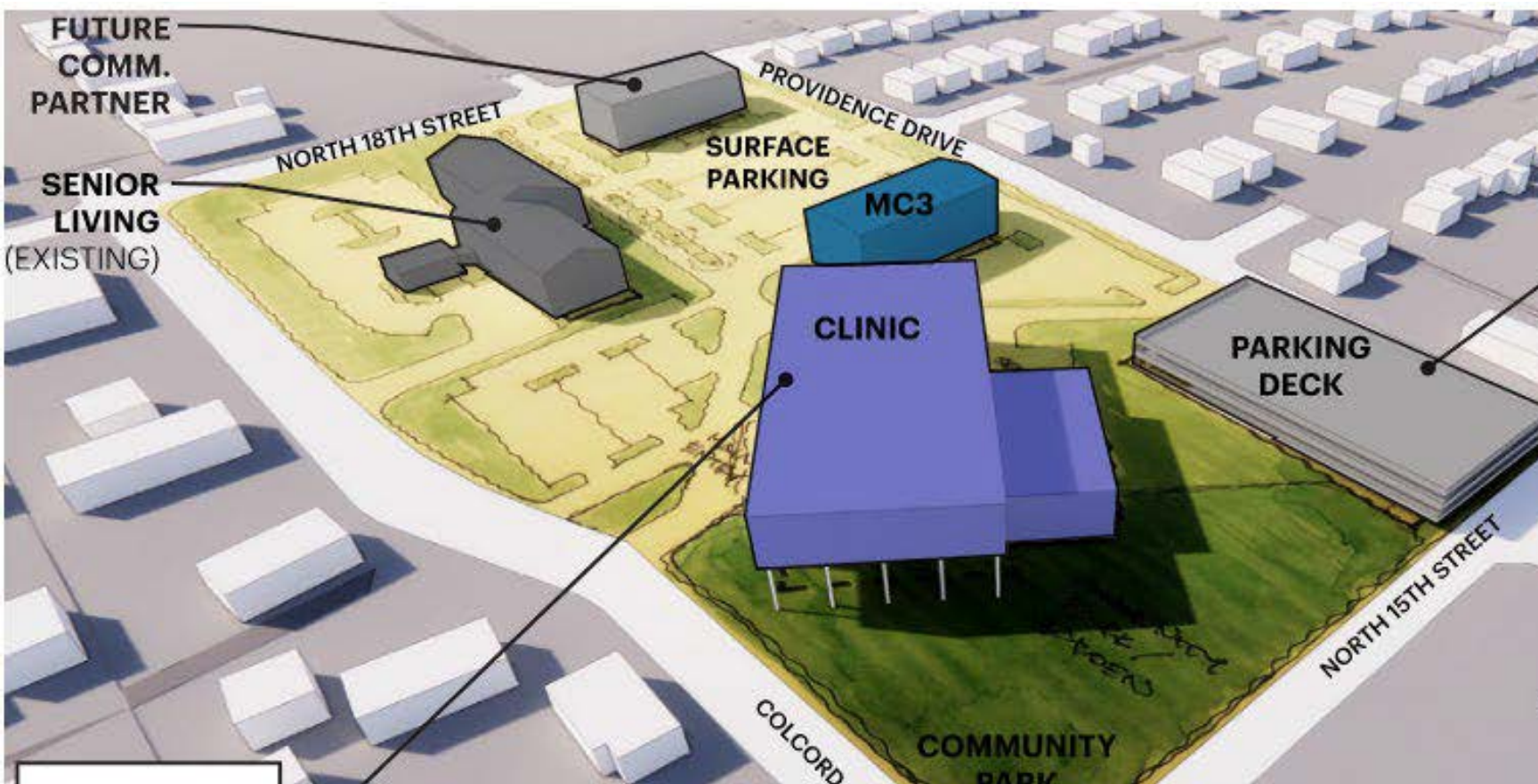


Building Family Medicine

1. Outgrown our current space. Organization has grown exponentially
 - A. 1 site to 14 (16,000 patient to almost 60,000)
 - B. Wellness facilities, billing, administration, eligibility, technology
2. Current building unable to be expanded/renovated to meet our needs
3. Current clinics are not ADA compliant – and unable to be modified
4. Primary care has changed to meet comprehensive needs of patients, requiring more clinical space for care







Concluding Points

- 1 in 5 in McLennan County
- Texas is least insured state in the nation; McLennan County is one of the largest counties in Texas without a local taxing hospital / health care district
- 81% of annual revenues comes from patient care
- The 3% of our budget from city & county is key; we are stretched every year to achieve this work
- Primary Care, a common good (National Academy of Medicine)
- 50 years achieving a critical mission / now let's build for 50 more
- Lessons from the pandemic



WACO
FAMILY
MEDICINE

Healthier. All Together.