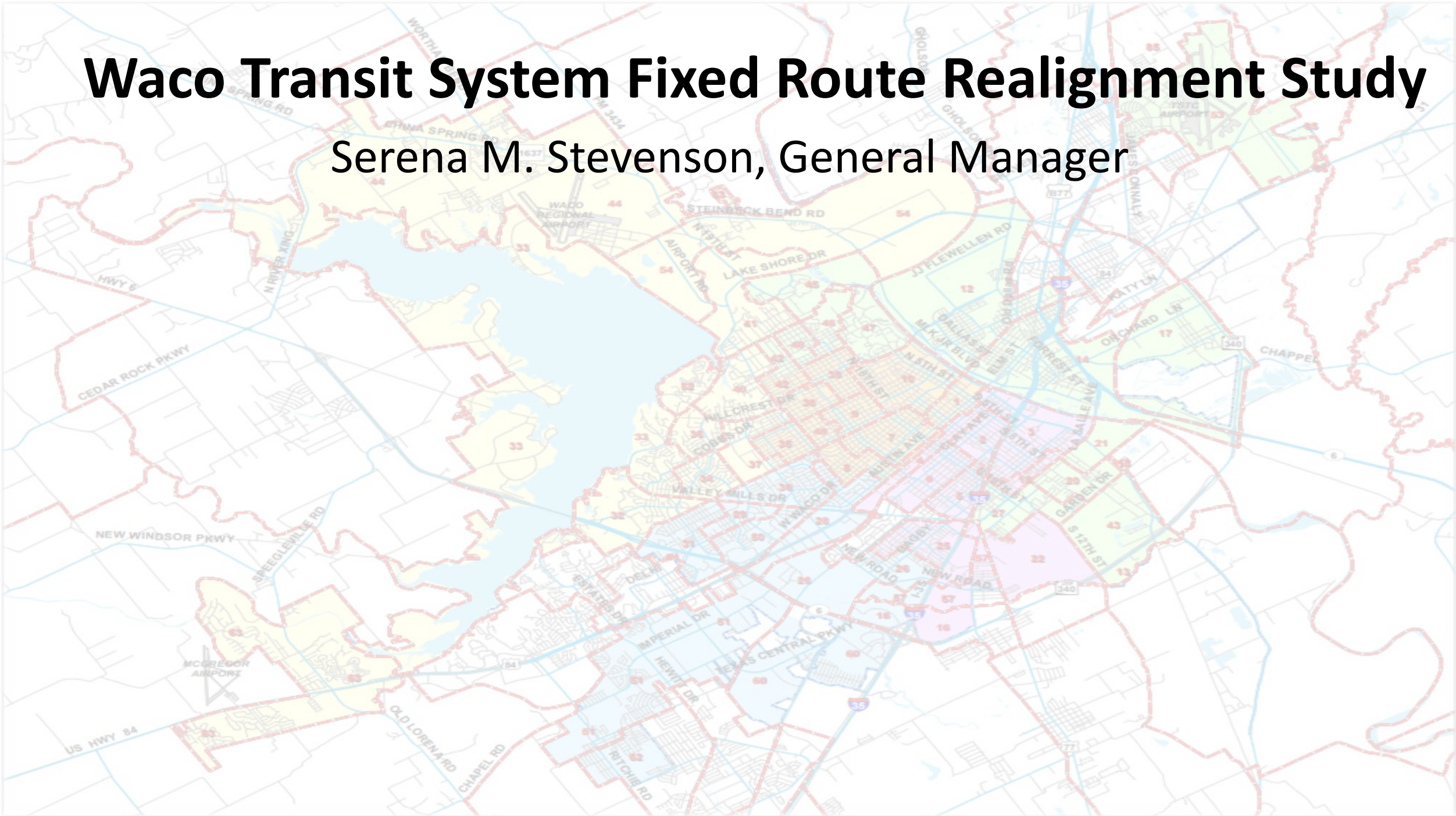


Waco Transit System Fixed Route Realignment Study

Serena M. Stevenson, General Manager



Fixed Route Realignment Overview

- Current Services
- Project Scope
- Comprehensive Review
- Next Steps



CITY OF WACO



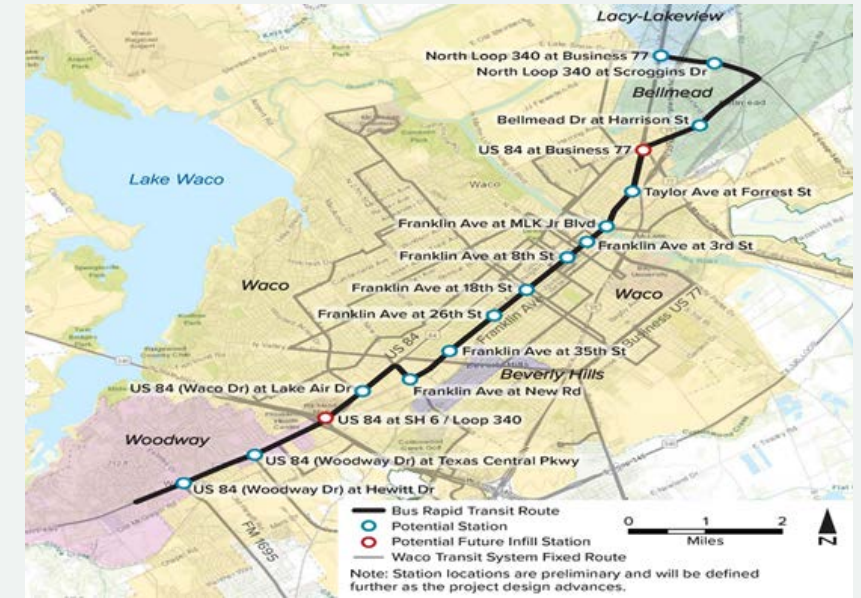
- 9 Fixed Routes
- 2 Shuttle Services
 - Lasalle Circle
 - Silo District Trolley
- Evening Link
- 1 Commuter Route
- Complementary Paratransit Service
- Baylor University Service



CITY OF WACO

Route Realignment Scope

- Assumes a Bus Rapid Transit service is operating using the full extent of the Locally Preferred Alignment ("LPA") identified within the Waco.
- Assumes a limited stop express bus service is operating using 30-minute headways and using the full extent of the LPA identified within the Waco Transit Rapid Transit Corridor Study.
- No enhanced transit service operates along the LPA. This scenario may consider a fixed route along a portion or the entirety of the LPA corridor, but this service would operate identical to all other fixed routes within the proposed system.



Comprehensive Review

- Connections 2045
- The Waco Metropolitan Transportation Plan (MTP)
- Waco Metropolitan Area Master Thoroughfare Plan
- Waco Comprehensive Plan 2040
- McLennan County 2018 Transit Need Study
- Downtown Waco Transit Study
- Waco Rapid Transit Corridor Feasibility Study
- Comprehensive Plans of the cities of Bellmead, Hewitt, Lacy-Lakeview and Woodway
- Waco Transit Bus Rapid Transit Design and Engineering Study
- Waco Active Transportation Plan
- The Trails Master Plan

Next Steps

- Project Kickoff
- Existing Conditions Analysis
- Scenario Development and Analysis
- Public Engagement
- Final Recommendation



CITY OF WACO

Questions

