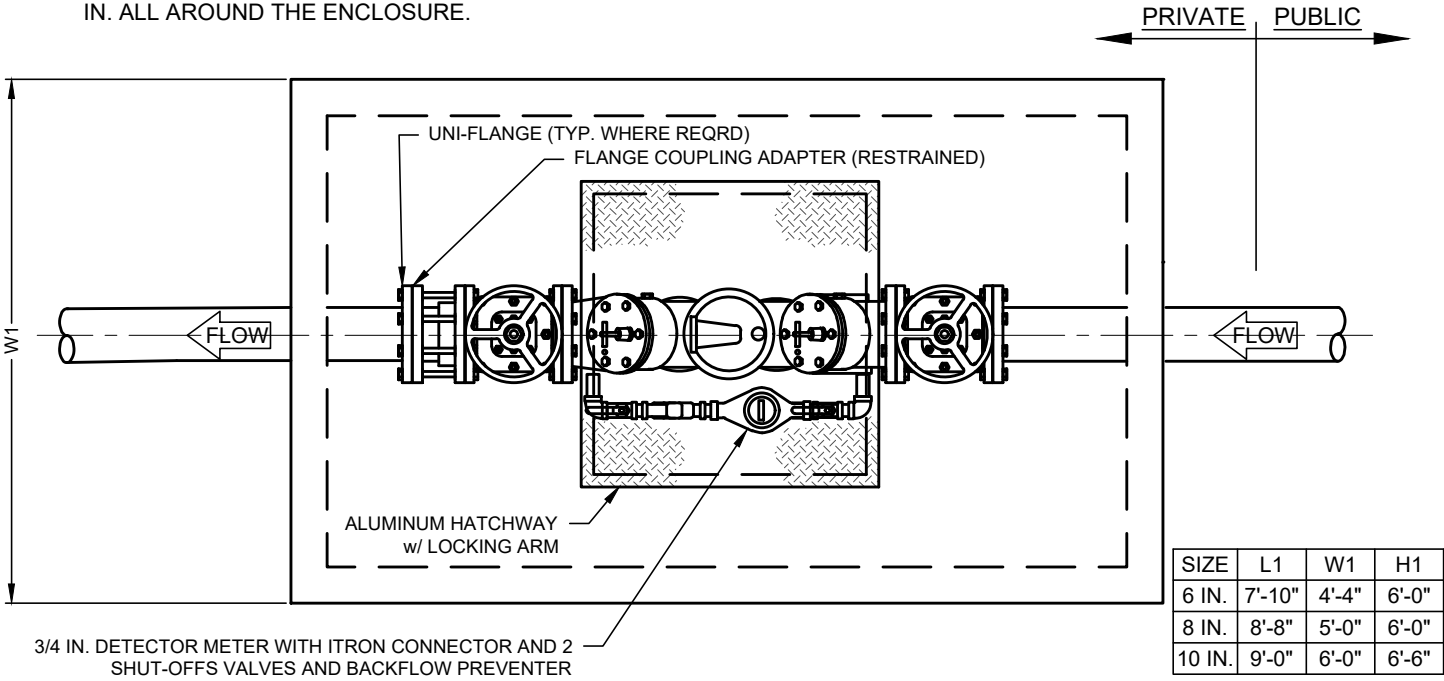
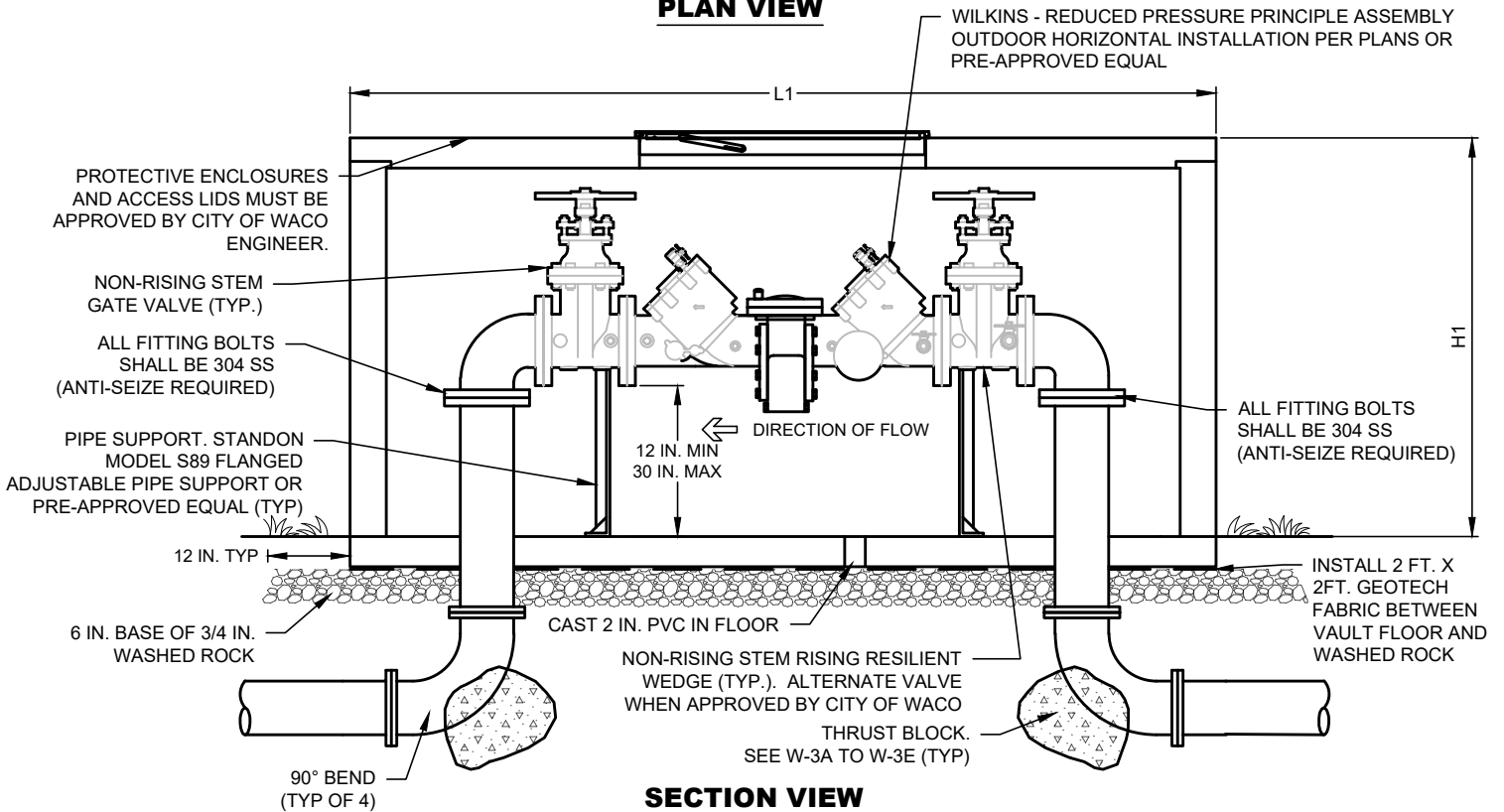


NOTES:

- ASSEMBLIES 2 IN. AND SMALLER SHALL HAVE AT LEAST A 12 IN. CLEARANCE IN ALL DIRECTIONS. ALL ASSEMBLIES LARGER THAN 2 IN. SHALL HAVE A MINIMUM OF 12 IN. ON THE BACK SIDE, 24 IN. ON THE TEST COCK SIDE, AND THE RELIEF VALVE OPENING SHALL BE AT LEAST 12 IN. PLUS NOMINAL SIZE OF ASSEMBLY ABOVE THE FLOOR OR HIGHEST POSSIBLE WATER LEVEL.
- THE ASSEMBLY SHALL BE READILY ACCESSIBLE FOR TESTING AND MAINTENANCE WITH A MINIMUM CLEARANCE OF 12 IN. ALL AROUND THE ENCLOSURE.



PLAN VIEW



SECTION VIEW

REDUCED PRESSURE ZONE ASSEMBLY AND VAULT

(NO SCALE)

DISCLAIMER: THE USE OF THIS STANDARD IS GOVERNED BY THE "TEXAS ENGINEERING PRACTICE ACT". NO WARRANTY OF ANY KIND IS MADE BY THE CITY OF WACO FOR ANY PURPOSE WHATSOEVER. THE CITY OF WACO ASSUMES NO RESPONSIBILITY FOR THE CONVERSION OF THIS STANDARD TO OTHER FORMATS OR FOR INCORRECT RESULTS OR DAMAGES RESULTING FROM ITS USE.



**ENGINEERING
DIVISION**



REVISIONS			
NO.	COMMENTS	BY	DATE
##	DESCRIPTION	FL	MO/DY/YEAR

DATE
8/25/2021

W-25