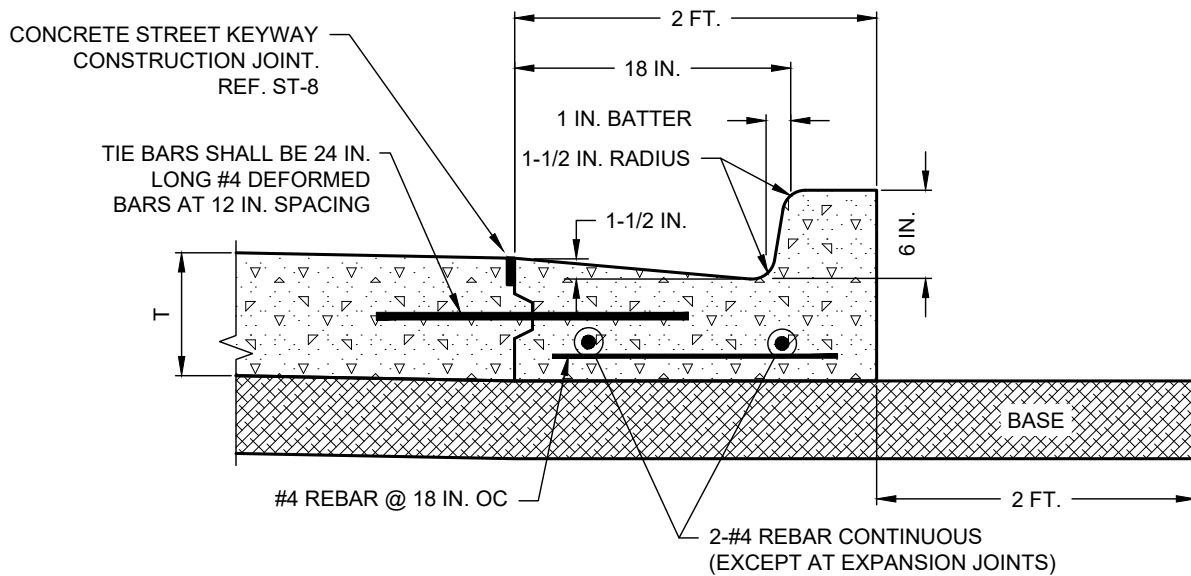


**MONOLITHIC CURB**



**FOR USE EXCLUSIVELY IN CONCRETE CUL-DE-SACS**

**NOTES:**

1. REQUIRED STEPS OF PREPARING PAVEMENT SURFACE TO RECEIVE CURB:
  - 1.1. ROUGHEN SURFACE BEFORE PAVEMENT TAKES FINAL SET.
  - 1.2. WIRE BRUSH, BROOM, AND WASH SURFACE TO REMOVE CURING COMPOUND, DIRT, DEBRIS, ETC.
  - 1.3. JUST BEFORE PLACING CURB, WET THE SURFACE WITH WATER AND APPLY DRY PORTLAND CEMENT IN SUFFICIENT QUANTITY TO MAKE A THICK PASTE.
2. CURB SHALL BE PLACED MONOLITHICALLY UNLESS OTHERWISE APPROVED BY THE CITY ENGINEER.

**CONCRETE STREETS CURB DETAILS**

(NO SCALE)

DISCLAIMER: THE USE OF THIS STANDARD IS GOVERNED BY THE "TEXAS ENGINEERING PRACTICE ACT". NO WARRANTY OF ANY KIND IS MADE BY THE CITY OF WACO FOR ANY PURPOSE WHATSOEVER. THE CITY OF WACO ASSUMES NO RESPONSIBILITY FOR THE CONVERSION OF THIS STANDARD TO OTHER FORMATS OR FOR INCORRECT RESULTS OR DAMAGES RESULTING FROM ITS USE.



**ENGINEERING  
DIVISION**



| REVISIONS |             |    |            |
|-----------|-------------|----|------------|
| NO.       | COMMENTS    | BY | DATE       |
|           |             |    |            |
|           |             |    |            |
|           |             |    |            |
|           |             |    |            |
| ##        | DESCRIPTION | FL | MM/DD/YYYY |

DATE  
11/29/2021

**ST-7**