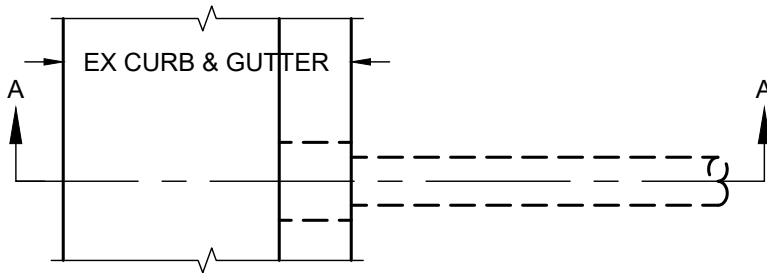
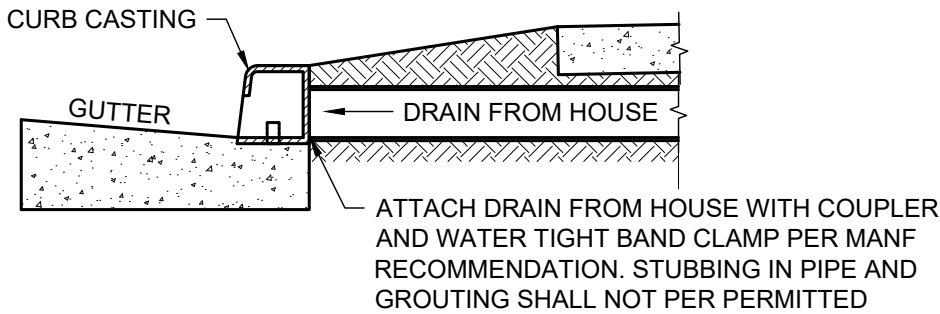
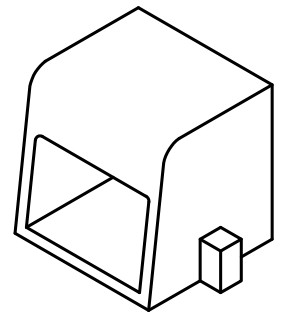


STORMWATER CURB OPENING

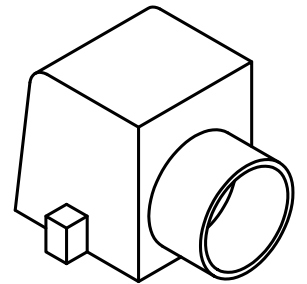
NEENAH R-3262-3



PLAN VIEW



SECTION A-A



NOTES:

1. CONTRACTOR SHALL LOCATE AND RECONNECT ANY SIDE DRAINS FROM ADJACENT PROPERTY THROUGH THE CURB.
2. INSTALL R-3262-3 SERIES HEAVY DUTY STORMWATER CURB OPENING BY NEENAH OR APPROVED EQUAL.
3. FIELD VERIFY SIZE AND LOCATION PRIOR TO PAVING OPERATION.
4. CONTRACTOR SHALL CAST INLETS IN PLACE DURING CURB PRODUCTION. "CUT-IN" NOT ACCEPTED.
5. TO BE USED FOR EXISTING PENETRATIONS. NEW CONNECTIONS ARE NOT ALLOWABLE.

RESIDENTIAL STORMWATER CURB OPENING

(NO SCALE)

DISCLAIMER: THE USE OF THIS STANDARD IS GOVERNED BY THE "TEXAS ENGINEERING PRACTICE ACT". NO WARRANTY OF ANY KIND IS MADE BY THE CITY OF WACO FOR ANY PURPOSE WHATSOEVER. THE CITY OF WACO ASSUMES NO RESPONSIBILITY FOR THE CONVERSION OF THIS STANDARD TO OTHER FORMATS OR FOR INCORRECT RESULTS OR DAMAGES RESULTING FROM ITS USE.



**ENGINEERING
DIVISION**



REVISIONS			
NO.	COMMENTS	BY	DATE
##	DESCRIPTION	FL	MM/DD/YYYY

DATE
11/29/2021

ST-21