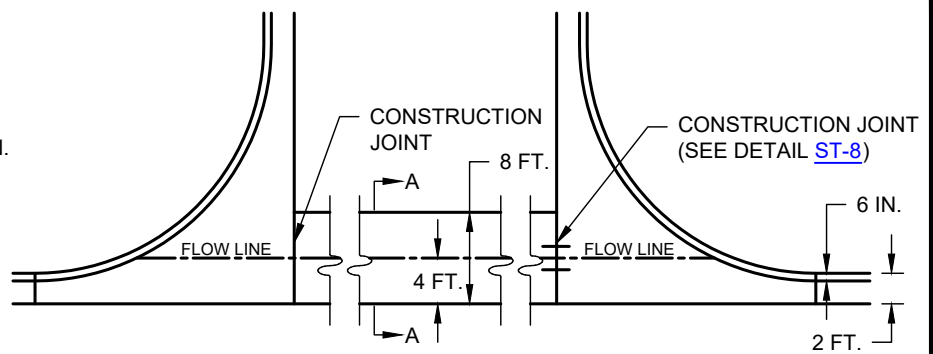


**A-A**



**NOTES:**

- IF FILLETS ARE NOT EXISTING, VALLEY AND FILLETS SHALL EACH BE MONOLITHIC WHEN CURB AND GUTTER IS CALLED FOR.
- UPSTREAM RETURN IN VALLEY SHALL BE CONSTRUCTED SO WATER WILL NOT POND.
- IF RUNOFF IS BEING CONVEYED ACROSS THE STREET AT AN INTERSECTION, A STANDARD VALLEY SHALL BE REQUIRED.
- FOR NEW OR RECONSTRUCTION OF PAVEMENT, SUBSTITUTE TOP 8 IN. OF PAVEMENT STRUCTURE PER PLANS WITH 8 IN. 3,000 PSI CONCRETE.
- IN ACCORDANCE WITH THE [STREET DESIGN CRITERIA](#) VALLEY GUTTERS MAY ONLY BE PLACED ON LOCAL STREETS EXCEPT ONLY WITH THE APPROVAL OF THE DIRECTOR OF PUBLIC WORKS MAY VALLEY GUTTERS BE PLACED ON THE:
  - SECONDARY RESIDENTIAL COLLECTOR STREET FOR COLLECTOR (RESIDENTIAL) STREET TO COLLECTOR (RESIDENTIAL) STREET INTERSECTIONS
  - ON THE SECONDARY COMMERCIAL/INDUSTRIAL COLLECTOR STREET FOR COLLECTOR (COMMERCIAL/INDUSTRIAL) STREET TO COLLECTOR (INDUSTRIAL/COLLECTOR) STREET INTERSECTIONS.
  - ON THE MINOR STREET OF AN ARTERIAL STREET INTERSECTION.
  - OTHERWISE, ARTERIAL STREETS AND COLLECTOR STREETS SHALL NOT BE CROSSED BY A VALLEY GUTTER.

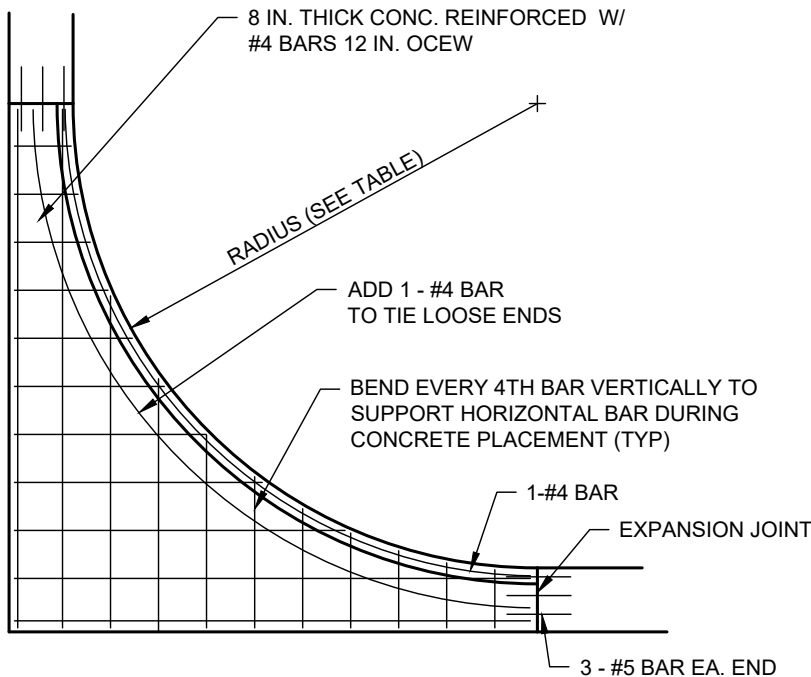
FOR PLACEMENT OF STANDARD CONCRETE VALLEY AND FILLET IN EXISTING PAVEMENT			
P.I. OF SUBGRADE	PORTLAND CEMENT CONCRETE	BASE	SUBGRADE
P.I. ≤ 20	8 IN.	4 IN. CTB <sup>a,b</sup>	COMPACTED
20 < P.I. < 40	8 IN.	-	6 IN. LSS <sup>c</sup>
P.I. ≥ 40	8 IN.	-	8 IN. LSS <sup>c</sup>

MATERIALS SHALL BE COMPACTED IN ACCORDANCE WITH [G-1C](#).

- ALTERNATE: 4 IN. RECYCLED CRUSHED CONCRETE (TXDOT STANDARD SPECIFICATIONS FOR CONSTRUCTION ITEM 247 FLEXIBLE BASE TYPE D, GRADE 1-2, EXCLUDING TYPE A MATERIALS, WITH A MINIMUM P.I. OF 4).
- REQUIRES BOND BREAKER CONSISTING OF 10 MIL POLYETHYLENE BETWEEN CEMENT TREATED BASE (CTB) AND P.C. CONCRETE PAVEMENT UNLESS ALTERNATE TO CTB IS USED.
- LIME STABILIZED SUBGRADE

## STANDARD CONCRETE VALLEY

(NO SCALE)



CURB RETURN RADII CRITERIA	
INTERSECTION TYPE	MINIMUM CURB RETURN RADIUS (FEET)
LOCAL TO LOCAL	20
LOCAL TO MINOR COLLECTOR (RESIDENTIAL)	20
MINOR COLLECTOR (RESIDENTIAL) TO MINOR COLLECTOR (RESIDENTIAL)	25
MINOR COLLECTOR (COMMERCIAL) TO MINOR COLLECTOR (COMMERCIAL)	30
MAJOR COLLECTOR (NEIGHBORHOOD) TO MAJOR COLLECTOR (NEIGHBORHOOD)	30
MAJOR COLLECTOR (COMMERCIAL/INDUSTRIAL) TO MAJOR COLLECTOR (COMMERCIAL/INDUSTRIAL)	30
MAJOR COLLECTOR (COMMERCIAL/INDUSTRIAL) TO ARTERIAL	30
ALLEYS SHALL BE TREATED AS LOCAL STREETS	

**NOTES:**

- CURB AND FILLET SHALL BE MONOLITHIC.
- CONCRETE FILLETS SHALL BE REQUIRED AT INTERSECTION CORNER OF ALL STREET CLASSIFICATIONS.

## CONCRETE CURB & GUTTER FILLET

(NO SCALE)



### ENGINEERING DIVISION

**DISCLAIMER:** THE USE OF THIS STANDARD IS GOVERNED BY THE "TEXAS ENGINEERING PRACTICE ACT". NO WARRANTY OF ANY KIND IS MADE BY THE CITY OF WACO FOR ANY PURPOSE WHATSOEVER. THE CITY OF WACO ASSUMES NO RESPONSIBILITY FOR THE CONVERSION OF THIS STANDARD TO OTHER FORMATS OR FOR INCORRECT RESULTS OR DAMAGES RESULTING FROM ITS USE.

REVISIONS			
NO.	COMMENTS	BY	DATE
2	ADD NOTE 5; REVISE NOTES UNDER P.I. TABLE & ADD COMPACTION NOTE; MODIFY CURB RETURN RADII TABLE	MZ	04/28/2025
1	REVISE WIDTH OF VALLEY & CORRESPONDING LOCATION OF FLOW LINE; ADD NOTE C SUBGRADE	MZ	11/15/2024
##	DESCRIPTION	FL	MM/DD/YYYY

DATE  
01/01/2024

**ST-19**