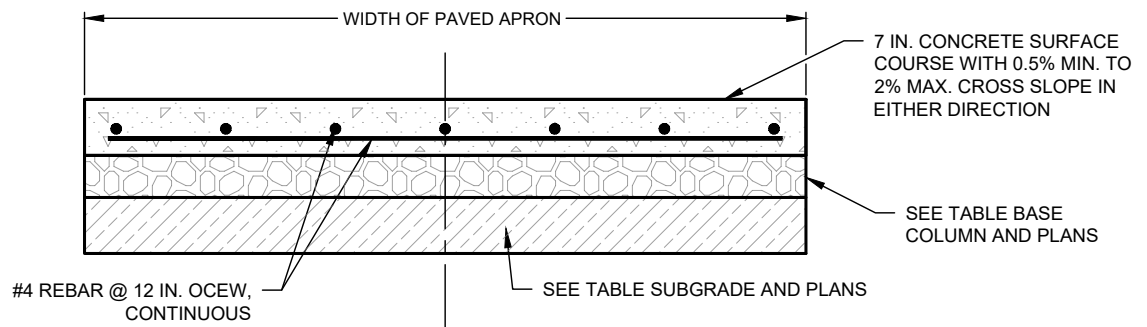


NOTES:

1. DOOR STOPS SHALL BE CONSTRUCTED OF $\frac{3}{4}$ IN. SOLID STEEL ROD.
2. $1\frac{1}{2}$ IN. DIAMETER SCHEDULE 40 GALVANIZED STEEL PIPE SHALL BE PLACED AT THE DOORS CLOSED AND OPEN POSITIONS.
3. THE RODS SHALL PENETRATE THE SURFACE $2\frac{1}{2}$ IN.
4. DOORS SHALL REMAIN OPEN AT A 30° ANGLE WITH A $\frac{3}{4}$ IN. SOLID STEEL ROD INTO A $1\frac{1}{2}$ IN. DIAMETER SCHEDULE 40 GALVANIZED STEEL PIPE TO HOLD DOOR OPEN.

DOOR STOP DETAILS



RIGID PAVEMENT SECTION (P.C. CONCRETE)			
P.I. OF SUBGRADE	P.C. CONCRETE	BASE	SUBGRADE
P.I. ≤ 20	7 IN.	4 IN. CTB ^{1,2}	COMPACTED ³
$20 < \text{P.I.} < 40$	7 IN.	-	6 IN. LSS ³
P.I. ≥ 40	7 IN.	-	8 IN. LSS ³


COMPACTION SHALL BE IN ACCORDANCE WITH [G-1C](#).

NOTES:

1. ALTERNATE TO CEMENT TREATED BASE (CTB) IS 4 IN. RECYCLED CRUSHED CONCRETE (TxDOT STANDARD SPECIFICATIONS FOR CONSTRUCTION ITEM 247 FLEXIBLE BASE TYPE D GRADE 1-2 EXCLUDING TYPE A MATERIAL, WITH MINIMUM P.I. OF FOUR).
2. BOND BREAKER CONSISTING OF 10 MIL POLYETHYLENE BETWEEN CTB AND P.C. CONCRETE PAVEMENT.
3. LIME STABILIZED SUBGRADE (LSS)
4. ANY DESIGNS THAT PROPOSE TO EXCEED 2% CROSS SLOPE SHALL REQUIRE THE APPROVAL OF THE DIRECTOR OF SOLID WASTE DEPARTMENT.

PAD AND APRON PAVEMENT SECTION DETAILS

WASTE CONTAINER PAD AND APRON DETAILS
(NO SCALE)

 CITY OF WACO	ENGINEERING DIVISION	REVISIONS				DATE 01/01/2024
	DISCLAIMER: THE USE OF THIS STANDARD IS GOVERNED BY THE "TEXAS ENGINEERING PRACTICE ACT". NO WARRANTY OF ANY KIND IS MADE BY THE CITY OF WACO FOR ANY PURPOSE WHATSOEVER. THE CITY OF WACO ASSUMES NO RESPONSIBILITY FOR THE CONVERSION OF THIS STANDARD TO OTHER FORMATS OR FOR INCORRECT RESULTS OR DAMAGES RESULTING FROM ITS USE.	NO.	COMMENTS	BY	DATE	SDW-5
	1	MODIFY NOTES 1 AND 3; ADD SUPERSCRIPTS & COMPACTION NOTE TO TABLE	MZ	04/28/2025		
	##	DESCRIPTION	FI	MM/DD/YYYY		