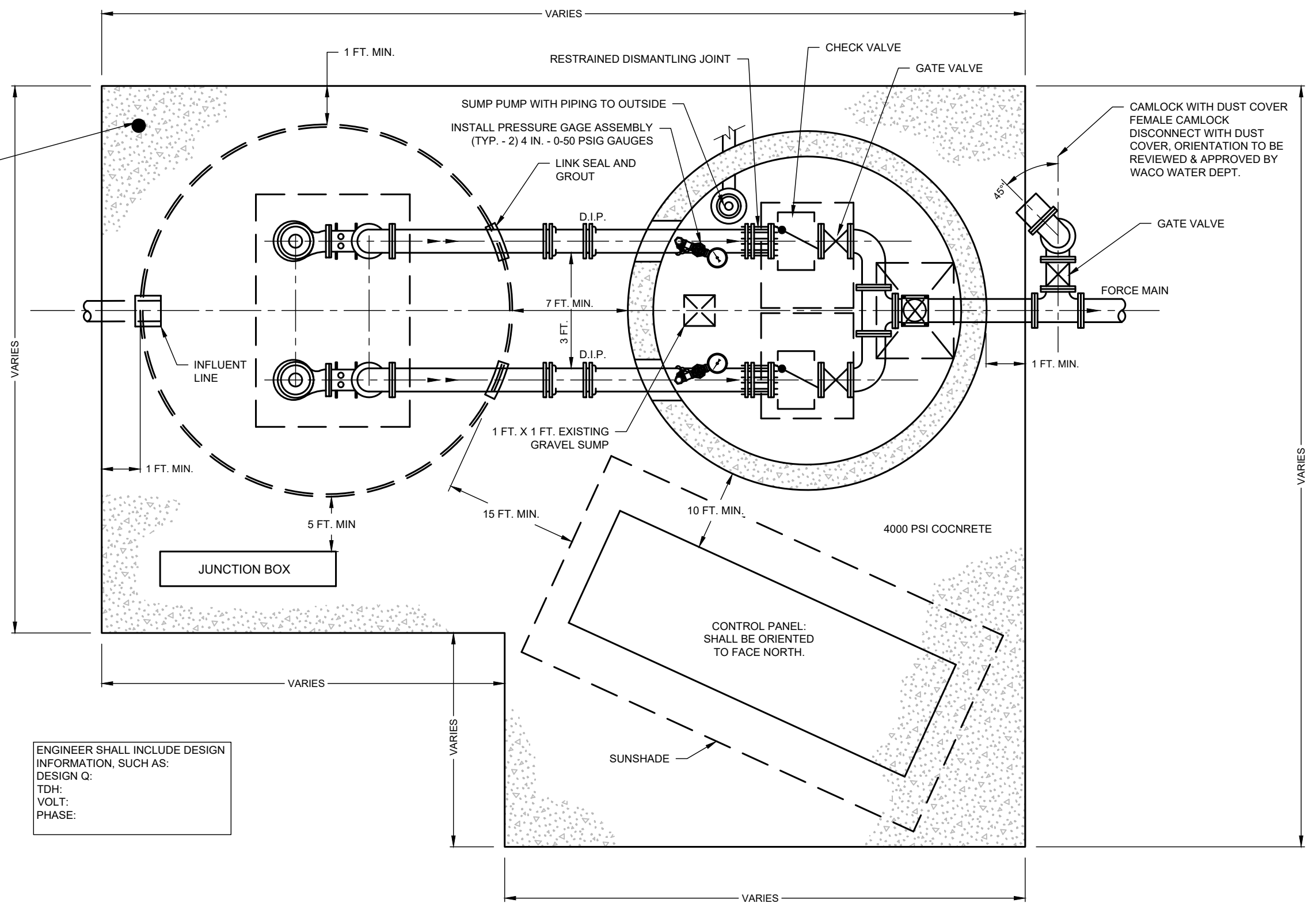


NOTE: CONTRACTOR TO SET (1) CITY OF WACO "BRASS CAP" INTO TOP OF WET WELL. "BRASS CAP" FURNISHED BY THE CITY OF WACO PUBLIC WORKS DEPARTMENT ENGINEERING DIVISION. LOCATION SHALL BE COORDINATED WITH CITY OF WACO.



ENGINEER SHALL INCLUDE DESIGN INFORMATION, SUCH AS:
 DESIGN Q:
 TDH:
 VOLT:
 PHASE:

- NOTES:**
1. SEAL ALL PENETRATIONS IN ELECTRICAL BOXES.
 2. ALL HARDWARE SHALL BE 304SS

LIFT STATION - WET WELL & VALVE VAULT

PLAN VIEW
 NOT TO SCALE

DISCLAIMER: THE USE OF THIS STANDARD IS GOVERNED BY THE "TEXAS ENGINEERING PRACTICE ACT". NO WARRANTY OF ANY KIND IS MADE BY THE CITY OF WACO FOR ANY PURPOSE WHATSOEVER. THE CITY OF WACO ASSUMES NO RESPONSIBILITY FOR THE CONVERSION OF THIS STANDARD TO OTHER FORMATS OR FOR INCORRECT RESULTS OR DAMAGES RESULTING FROM ITS USE.



ENGINEERING DIVISION



NO.	COMMENTS	BY	DATE
##	DESCRIPTION	MLZ	MO/DY/YEAR

DATE
 07/01/2022

S-24A