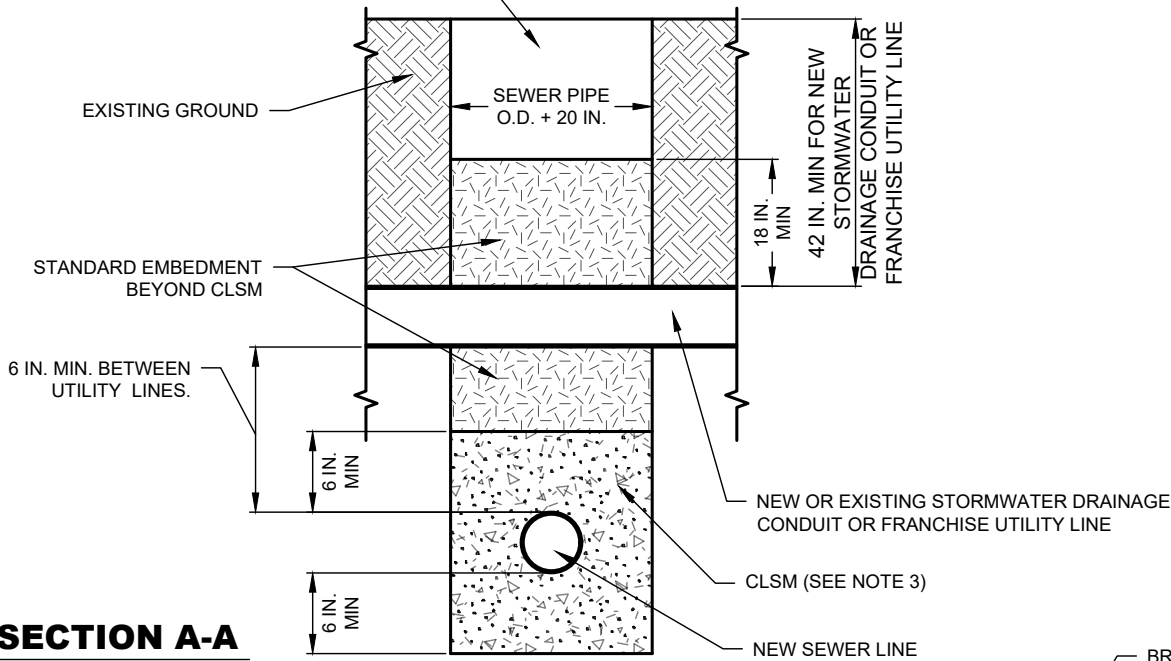
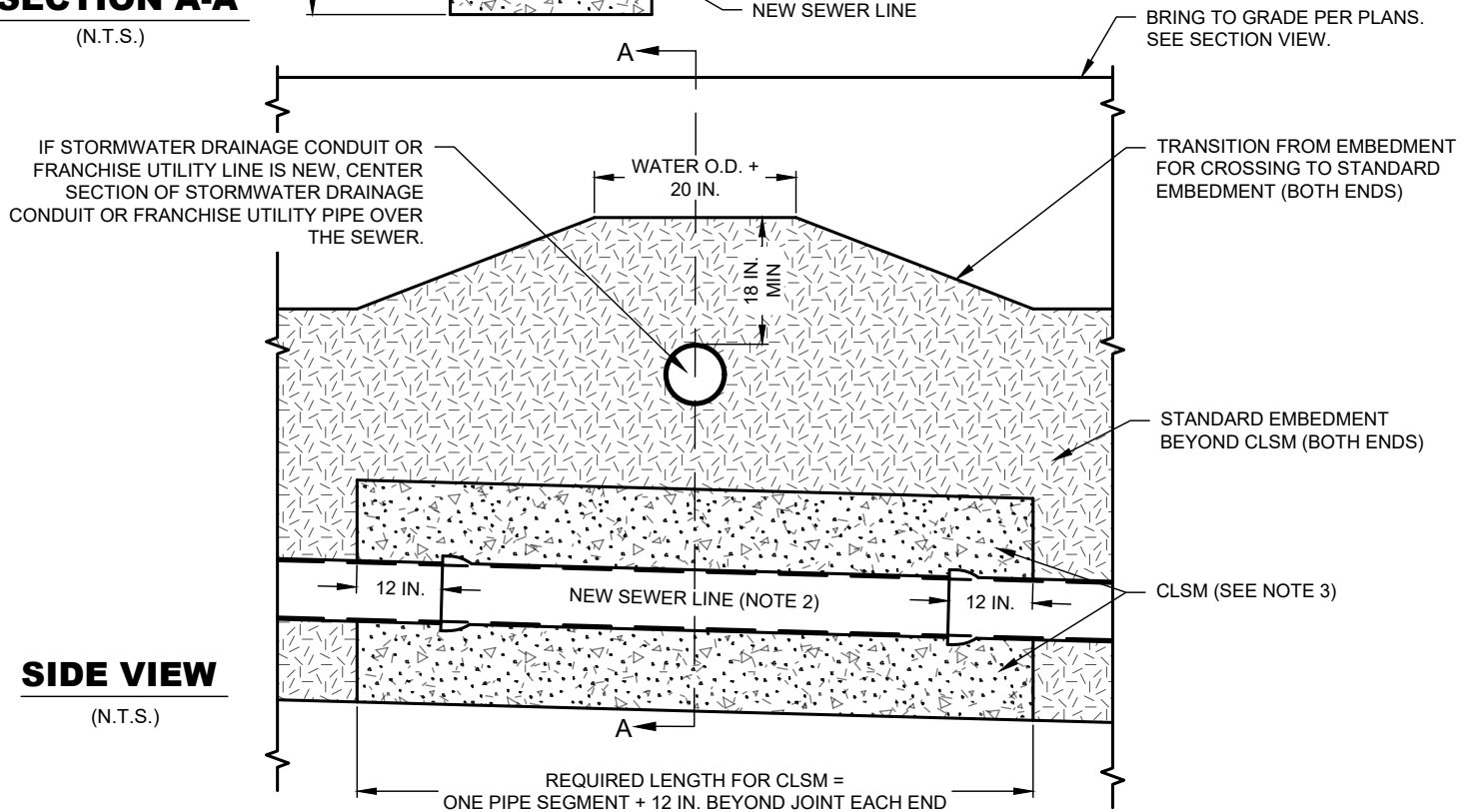


SURFACE REPLACEMENT AS SPECIFIED.  
SEE DETAILS G-8 AND G-9



**SECTION A-A**  
(N.T.S.)



**SIDE VIEW**  
(N.T.S.)

**NOTES:**

1. THIS DETAIL NEED NOT TO BE APPLIED FOR CROSSINGS INVOLVING SEWER SERVICE CONNECTIONS.
2. CENTER 18 FT. MIN. SECTION OF SEWER PIPE UNDER STORMWATER DRAINAGE CONDUIT OR FRANCHISE UTILITY PIPE. SEWER LINE SHALL BE PVC PRESSURE- RATED AT 150 PSI MIN.
3. CITY STANDARD CONTROLLED LOW STRENGTH MATERIAL (CLSM).

**EMBEDMENT FOR NEW SEWER CROSSING UNDER NEW OR EXISTING  
STORMWATER DRAINAGE CONDUIT OR FRANCHISE UTILITY LINE**

(NO SCALE)

DISCLAIMER: THE USE OF THIS STANDARD IS GOVERNED BY THE "TEXAS ENGINEERING PRACTICE ACT". NO WARRANTY OF ANY KIND IS MADE BY THE CITY OF WACO FOR ANY PURPOSE WHATSOEVER. THE CITY OF WACO ASSUMES NO RESPONSIBILITY FOR THE CONVERSION OF THIS STANDARD TO OTHER FORMATS OR FOR INCORRECT RESULTS OR DAMAGES RESULTING FROM ITS USE.



**ENGINEERING  
DIVISION**



REVISIONS			
NO.	COMMENTS	BY	DATE
1	REMOVE CLSM CAP DETAIL AND REFERENCE	MZ	01/25/2023
##	DESCRIPTION	FL	MO/DY/YEAR

DATE  
07/01/2022

**S-23**