

CUSTOM LOGO OR  
READ PATTERN  
MOLDED INTO  
SUBSTRATE IN  
CENTER POSITION

TOP ARCH FOR MOLDED INTO  
SUBSTRATE CUSTOM MARKING

RAISED MOLDED IN  
LETTERING

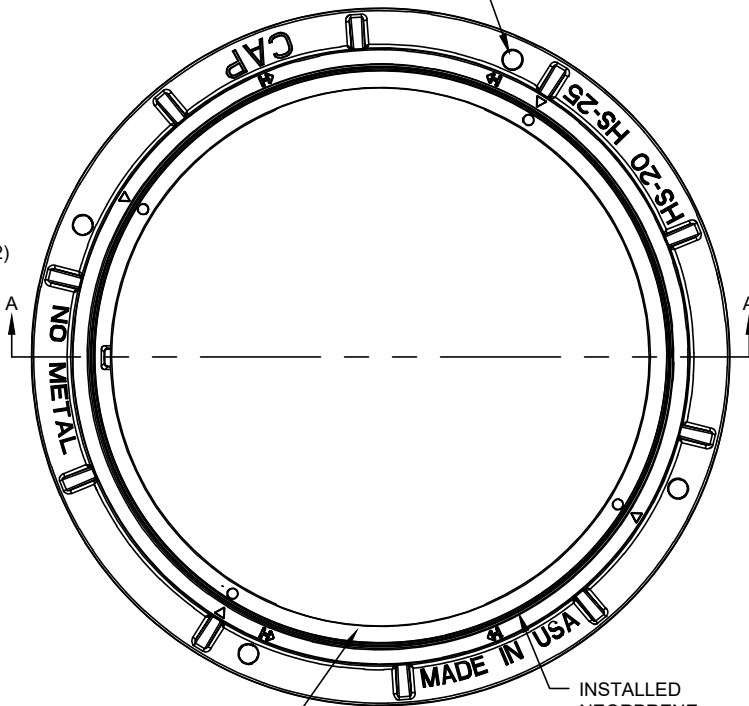
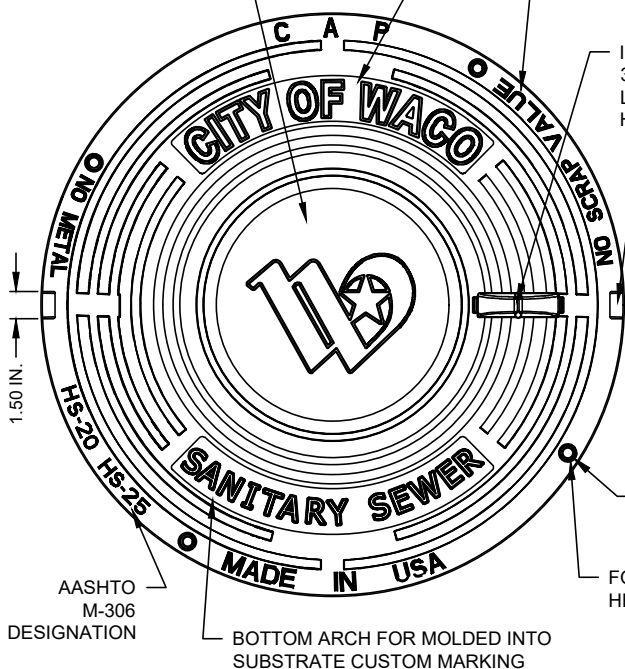
INSTALLED  
316 SS  
LIFTING  
HOOK

CONCEALED  
PICK HOLE (2)  
316 SS  
INSERTS  
INSTALLED

Ø.05 IN. BOLT  
HOLE (4)

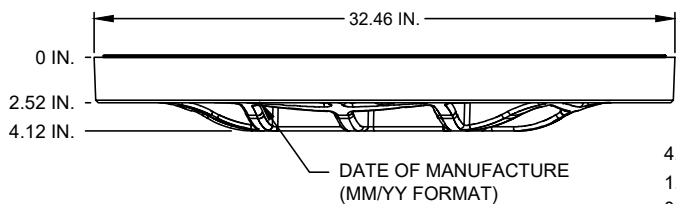
FOUR 316 SS HEX  
HEAD FASTENERS

ANCHOR HOLE 1.05 IN.

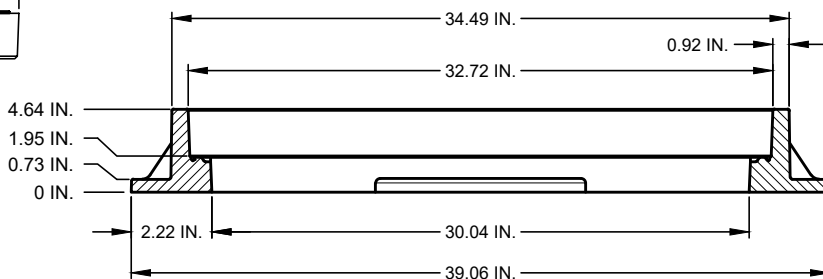


**COVER**  
COLOR = BLACK

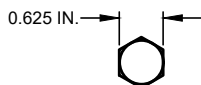
**FRAME**  
COLOR = BLACK



**COVER SIDE**



**SECTION A-A**



FASTENERS ARE 1/2-13 UNC, 3.5 IN. LONG

**NOTES:**

1. COMPOSITE ACCESS PRODUCTS LP PRODUCT CODE: A-1BK30X4-W01WLOSS-H1
2. ALL HARDWARE IS 316 STAINLESS STEEL.
3. DETECTABLE BY STANDARD METAL DETECTORS.
4. COMPRESSION MOLDED THERMOSET COMPOSITE - NO METAL REINFORCEMENT PERMITTED.
5. PASSED AASHTO M306 H20/H25 PROOF LOAD.
6. WATERTIGHT (0.0 GPM)

**SANITARY SEWER MANHOLE COMPOSITE BOLT COVER AND FRAME**  
(NO SCALE)

DISCLAIMER: THE USE OF THIS STANDARD IS GOVERNED BY THE "TEXAS ENGINEERING PRACTICE ACT". NO WARRANTY OF ANY KIND IS MADE BY THE CITY OF WACO FOR ANY PURPOSE WHATSOEVER. THE CITY OF WACO ASSUMES NO RESPONSIBILITY FOR THE CONVERSION OF THIS STANDARD TO OTHER FORMATS OR FOR INCORRECT RESULTS OR DAMAGES RESULTING FROM ITS USE.



**ENGINEERING  
DIVISION**



REVISIONS			
NO.	COMMENTS	BY	DATE
##	DESCRIPTION	FL	MO/DY/YEAR

DATE  
8/25/2021

**S-10**