

CITY OF WACO

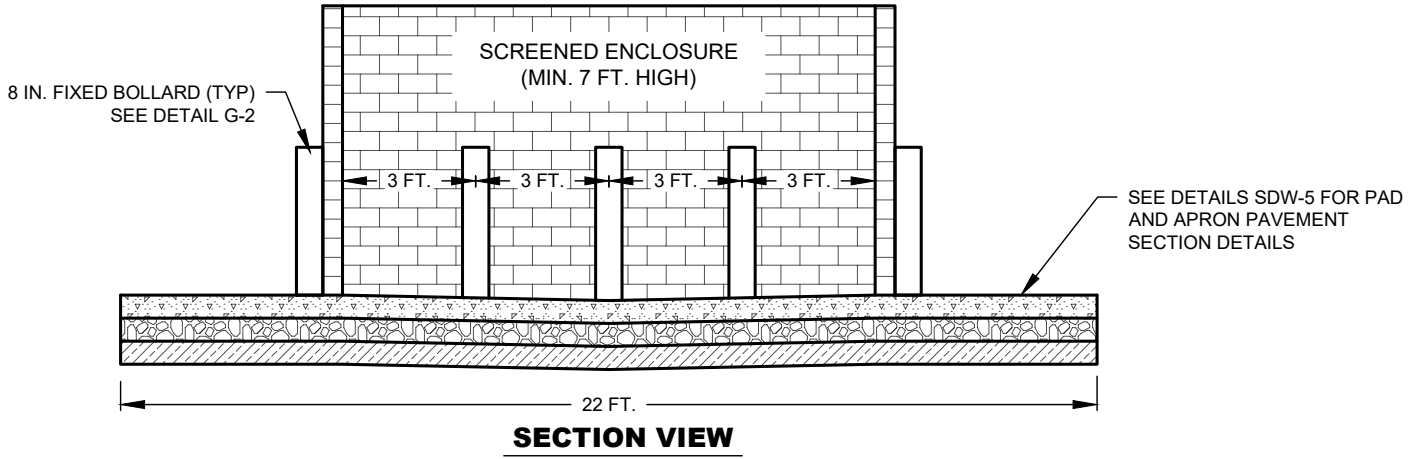
**SOLID WASTE
DETAILS**



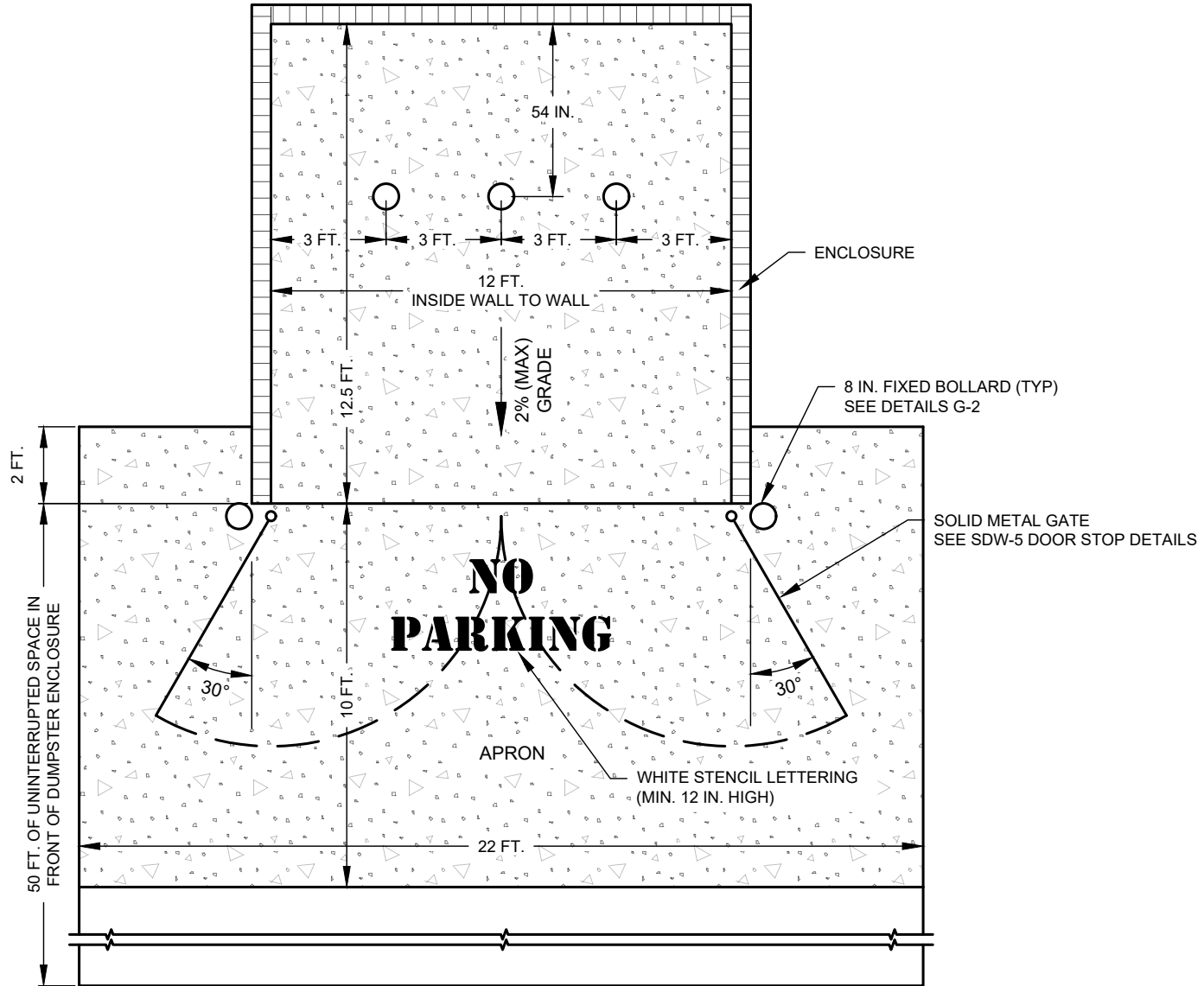
CITY OF WACO SOLID WASTE DETAILS

Sheet #	Sheet Title	Previous Sheet #
SDW-1	Front Load Single Waste Container Pad With Enclosure	N/A
SDW-2	Front Load Double Waste Container Pad With Enclosure	N/A
SDW-3	Side Load Waste Container Pad Details	N/A
SDW-4	Rear Load Single Waste Container Pad With Enclosure	N/A
SDW-5	Waste Container Pad and Apron Details	N/A





SECTION VIEW



PLAN VIEW

FRONT LOAD SINGLE WASTE CONTAINER PAD WITH ENCLOSURE

(NO SCALE)

DRAFT

DISCLAIMER: THE USE OF THIS STANDARD IS GOVERNED BY THE "TEXAS ENGINEERING PRACTICE ACT". NO WARRANTY OF ANY KIND IS MADE BY THE CITY OF WACO FOR ANY PURPOSE WHATSOEVER. THE CITY OF WACO ASSUMES NO RESPONSIBILITY FOR THE CONVERSION OF THIS STANDARD TO OTHER FORMATS OR FOR INCORRECT RESULTS OR DAMAGES RESULTING FROM ITS USE.



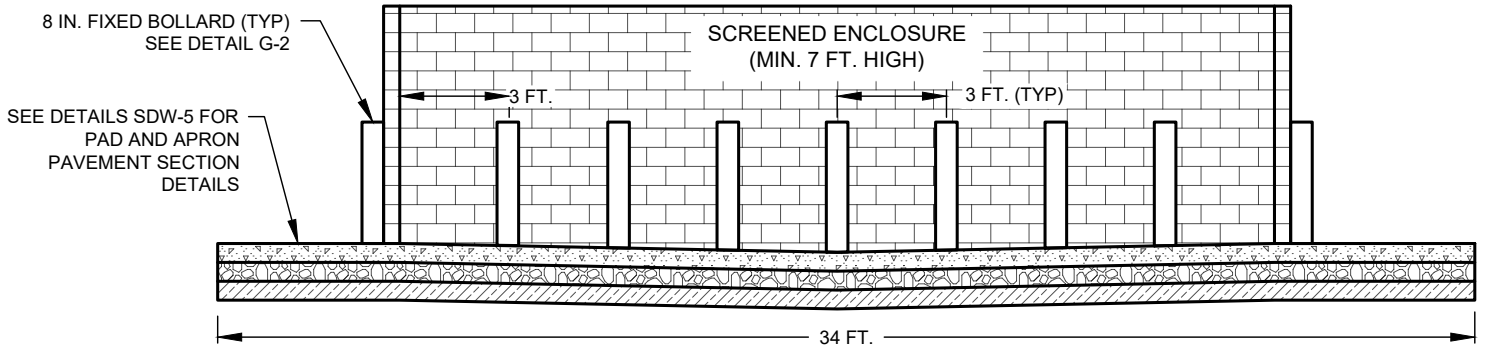
**ENGINEERING
DIVISION**



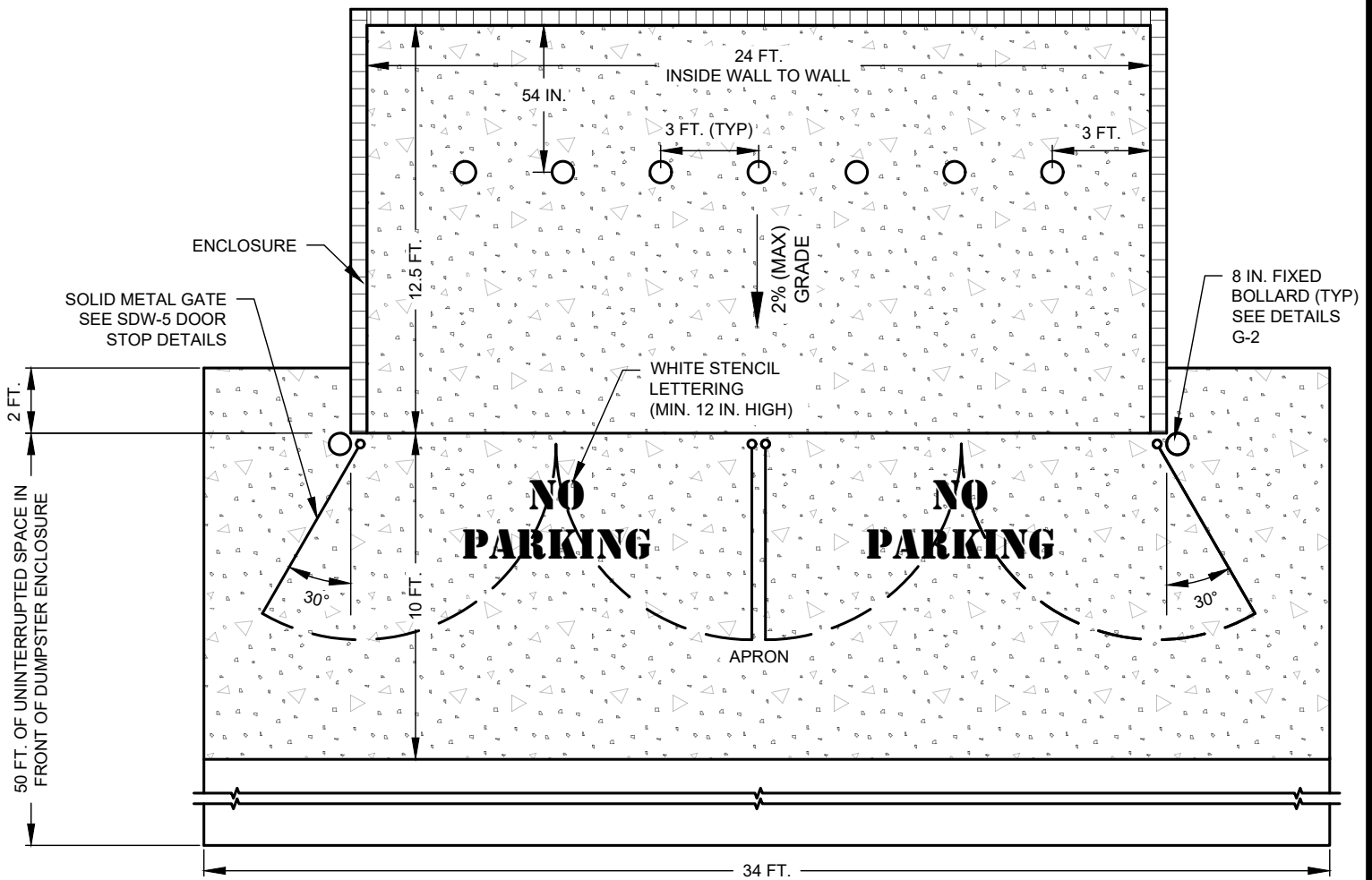
REVISIONS			
NO.	COMMENTS	BY	DATE
##	DESCRIPTION	FL	MM/DD/YYYY

DATE
03/17/2022

SDW-1



SECTION VIEW



PLAN VIEW

FRONT LOAD DOUBLE WASTE CONTAINER PAD WITH ENCLOSURE

(NO SCALE)

DRAFT

DISCLAIMER: THE USE OF THIS STANDARD IS GOVERNED BY THE "TEXAS ENGINEERING PRACTICE ACT". NO WARRANTY OF ANY KIND IS MADE BY THE CITY OF WACO FOR ANY PURPOSE WHATSOEVER. THE CITY OF WACO ASSUMES NO RESPONSIBILITY FOR THE CONVERSION OF THIS STANDARD TO OTHER FORMATS OR FOR INCORRECT RESULTS OR DAMAGES RESULTING FROM ITS USE.



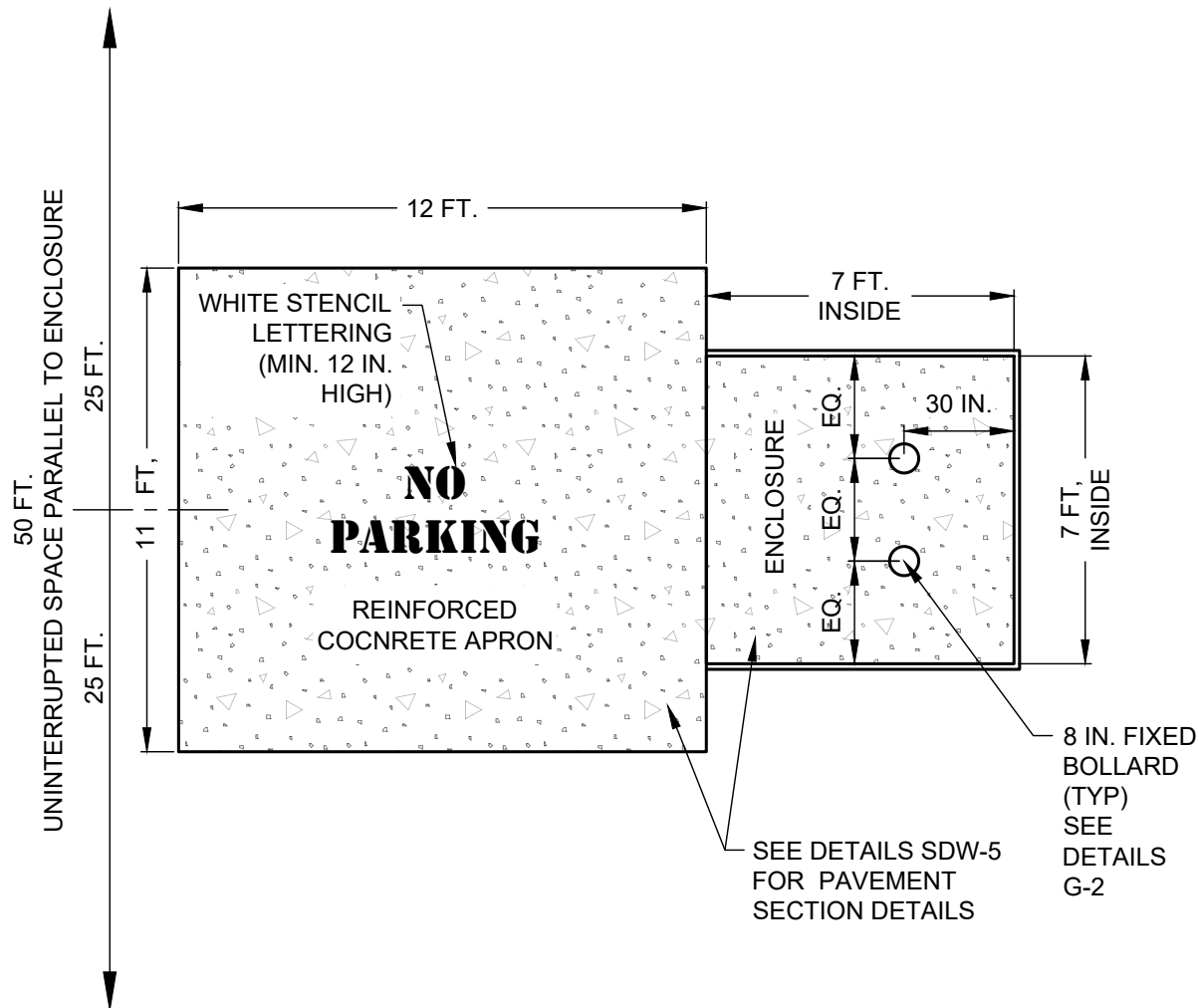
**ENGINEERING
DIVISION**



REVISIONS			
NO.	COMMENTS	BY	DATE
##	DESCRIPTION	FL	MM/DD/YYYY

DATE
03/17/2022

SDW-2



NOTES:

1. INSIDE DIMENSION OF ENCLOSURE SHALL BE 7 FT. X 7 FT. OF UNINTERRUPTED SPACE. AN ADDITIONAL 12 FT. X 11 FT. REINFORCED CONCRETE PAD SHALL BE PARALLEL TO ENCLOSURE TO PROVIDE A FIRM PLATFORM FOR SERVICE.
2. ENCLOSURE MUST BE PARALLEL TO DRIVE, ALLEY OR FIRE LANE AND ALLOW ROOM FOR VEHICLE TO APPROACH. DOORS ARE NOT ALLOWED ON SIDE LOAD ENCLOSURES.
3. SIDE LOAD WASTE CONTAINERS REQUIRE SOLID WASTE MANAGEMENT APPROVAL.

SIDE LOAD WASTE CONTAINER PAD DETAILS

(NO SCALE)

DISCLAIMER: THE USE OF THIS STANDARD IS GOVERNED BY THE "TEXAS ENGINEERING PRACTICE ACT". NO WARRANTY OF ANY KIND IS MADE BY THE CITY OF WACO FOR ANY PURPOSE WHATSOEVER. THE CITY OF WACO ASSUMES NO RESPONSIBILITY FOR THE CONVERSION OF THIS STANDARD TO OTHER FORMATS OR FOR INCORRECT RESULTS OR DAMAGES RESULTING FROM ITS USE.

DRAFT



**ENGINEERING
DIVISION**

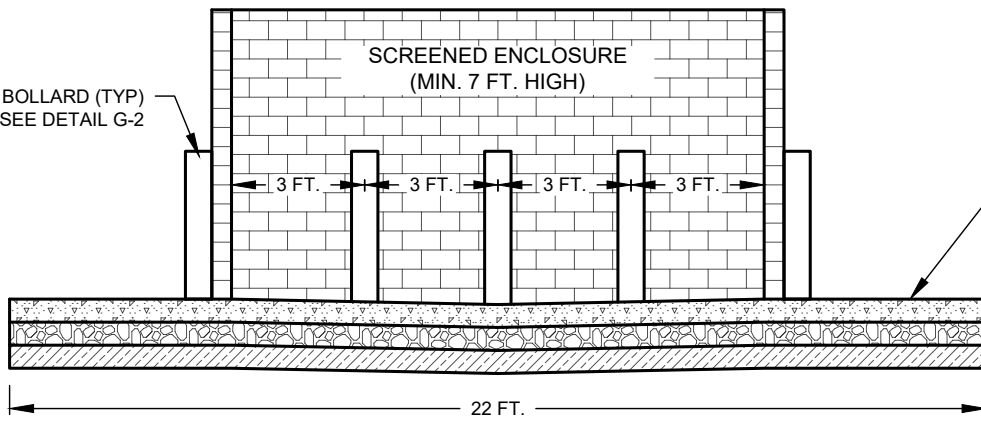


REVISIONS			
NO.	COMMENTS	BY	DATE
##	DESCRIPTION	FL	MM/DD/YYYY

DATE
03/17/2022

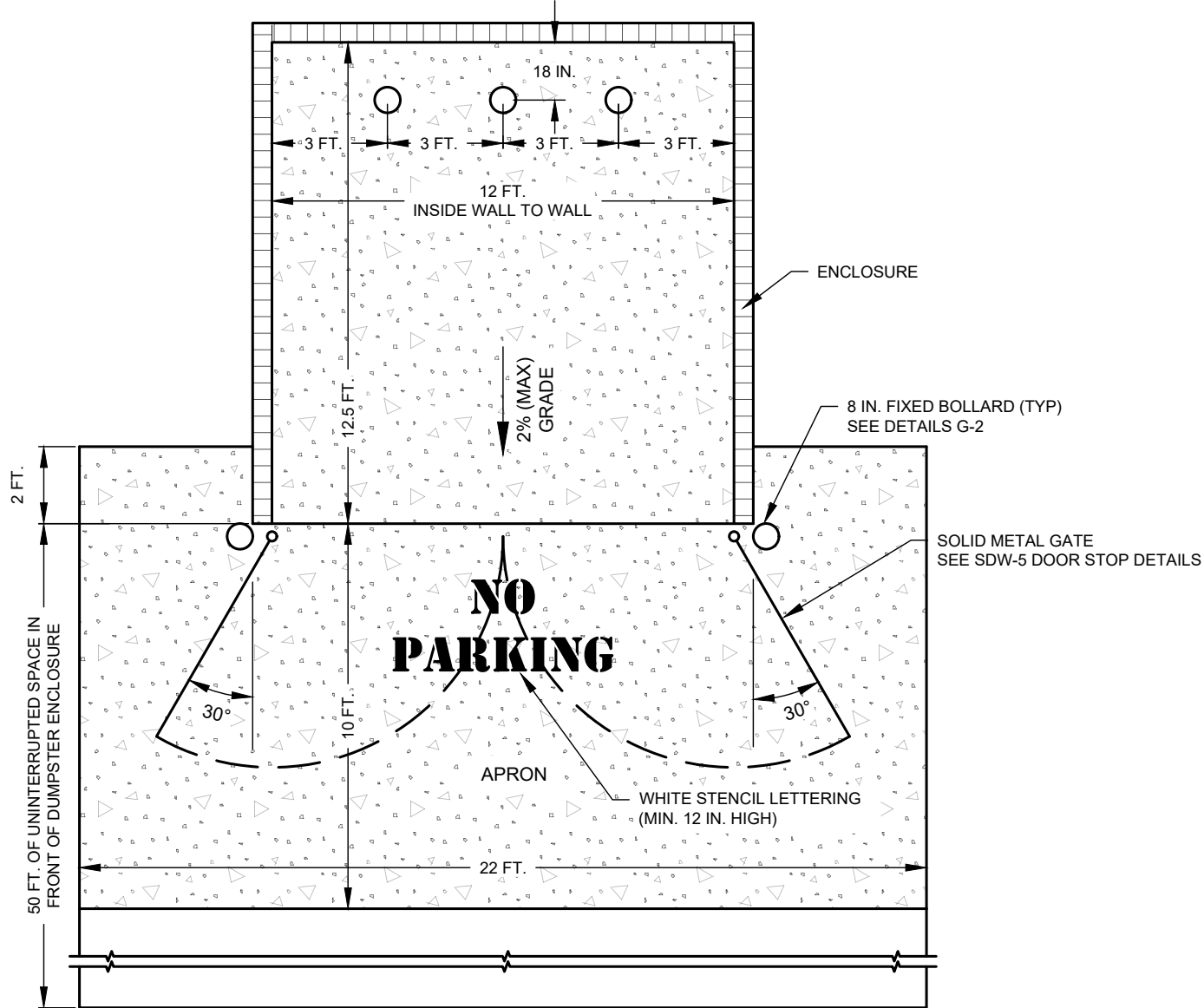
SDW-3

8 IN. FIXED BOLLARD (TYP)
SEE DETAIL G-2



SEE DETAILS SDW-5 FOR PAD AND APRON PAVEMENT SECTION DETAILS

SECTION VIEW



PLAN VIEW

REAR LOAD SINGLE WASTE CONTAINER PAD WITH ENCLOSURE

(NO SCALE)

DRAFT

DISCLAIMER: THE USE OF THIS STANDARD IS GOVERNED BY THE "TEXAS ENGINEERING PRACTICE ACT". NO WARRANTY OF ANY KIND IS MADE BY THE CITY OF WACO FOR ANY PURPOSE WHATSOEVER. THE CITY OF WACO ASSUMES NO RESPONSIBILITY FOR THE CONVERSION OF THIS STANDARD TO OTHER FORMATS OR FOR INCORRECT RESULTS OR DAMAGES RESULTING FROM ITS USE.



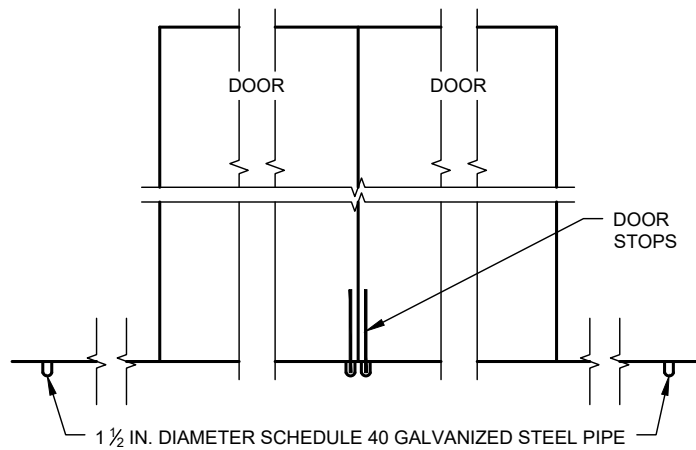
**ENGINEERING
DIVISION**



REVISIONS			
NO.	COMMENTS	BY	DATE
##	DESCRIPTION	FL	MM/DD/YYYY

DATE
03/17/2022

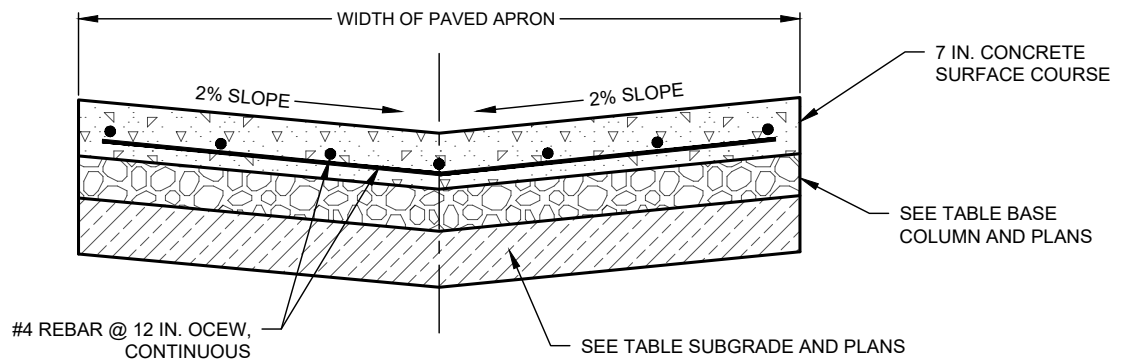
SDW-4



NOTES:

1. DOOR STOPS SHALL BE CONSTRUCTED OF 3/4 IN. SOLID STEEL ROD.
2. 1 1/2 IN. DIAMETER SCHEDULE 40 GALVANIZED STEEL PIPE SHALL BE PLACED AT THE DOORS CLOSED AND OPEN POSITIONS.
3. THE RODS SHALL PENETRATED THE SURFACE 2 1/2 IN.
4. DOORS SHALL REMAIN OPEN AT A 30° ANGLE WITH A 3/4 IN. SOLID STEEL ROD INTO A 1 1/2 IN. DIAMETER SCHEDULE 40 GALVANIZED STEEL PIPE TO HOLD DOOR OPEN.

DOOR STOP DETAILS



P.I. OF SUBGRADE	RIGID PAVEMENT SECTION (P.C. CONCRETE)		
	P.C. CONCRETE	BASE	SUBGRADE
P.I. ≤ 20	7 IN.	4 IN. CTB ^{1,2}	COMPACTED ³
20 < P.I. < 40	7 IN.	-	6 IN. LSS
P.I. ≥ 40	7 IN.	-	8 IN. LSS

1. MAY SUBSTITUTE: 4 IN. RECYCLED CRUSHED (TXDOT STANDARD SPECIFICATIONS FOR CONSTRUCTION ITEM 247 FLEXIBLE BASE TYPE D GRADE 1-2 WITH MINIMUM P.I. OF FOUR).
2. BOND BREAKER CONSISTING OF 10 MIL POLYETHYLENE BETWEEN CTB AND P.C. CONCRETE PAVEMENT.
3. COMPACTED TO 95% DENSITY OF MAXIMUM DENSITY PER TEST PROCEDURE TEX-114-E.

PAD AND APRON PAVEMENT SECTION DETAILS

WASTE CONTAINER PAD AND APRON DETAILS

(NO SCALE)

DISCLAIMER: THE USE OF THIS STANDARD IS GOVERNED BY THE "TEXAS ENGINEERING PRACTICE ACT". NO WARRANTY OF ANY KIND IS MADE BY THE CITY OF WACO FOR ANY PURPOSE WHATSOEVER. THE CITY OF WACO ASSUMES NO RESPONSIBILITY FOR THE CONVERSION OF THIS STANDARD TO OTHER FORMATS OR FOR INCORRECT RESULTS OR DAMAGES RESULTING FROM ITS USE.

DRAFT



**ENGINEERING
DIVISION**



REVISIONS			
NO.	COMMENTS	BY	DATE
##	DESCRIPTION	FL	MM/DD/YYYY

DATE
03/17/2022

SDW-5