

PROMOTE • PREVENT • PROTECT



WACO - MC LENNAN COUNTY  
Public Health District



# COVID -19 Status Report

November 26-December 9, 2022

# COVID-19 Status Report

November 26 - December 9, 2022

## TABLE OF CONTENTS

<a href="#">Key Metrics</a>	3
<a href="#">Trend Graphs</a>	4
<a href="#">Health District Vaccination Clinics</a>	6

# COVID-19 Status Report

## November 26 - December 9, 2022

### KEY METRICS

**COVID-19 Community Threat Level**

**Low**

Total Cases

82,558

Total Fatalities

906

Vaccines Administered

351,904

Hospitalization Rate in TSA M

4.33%

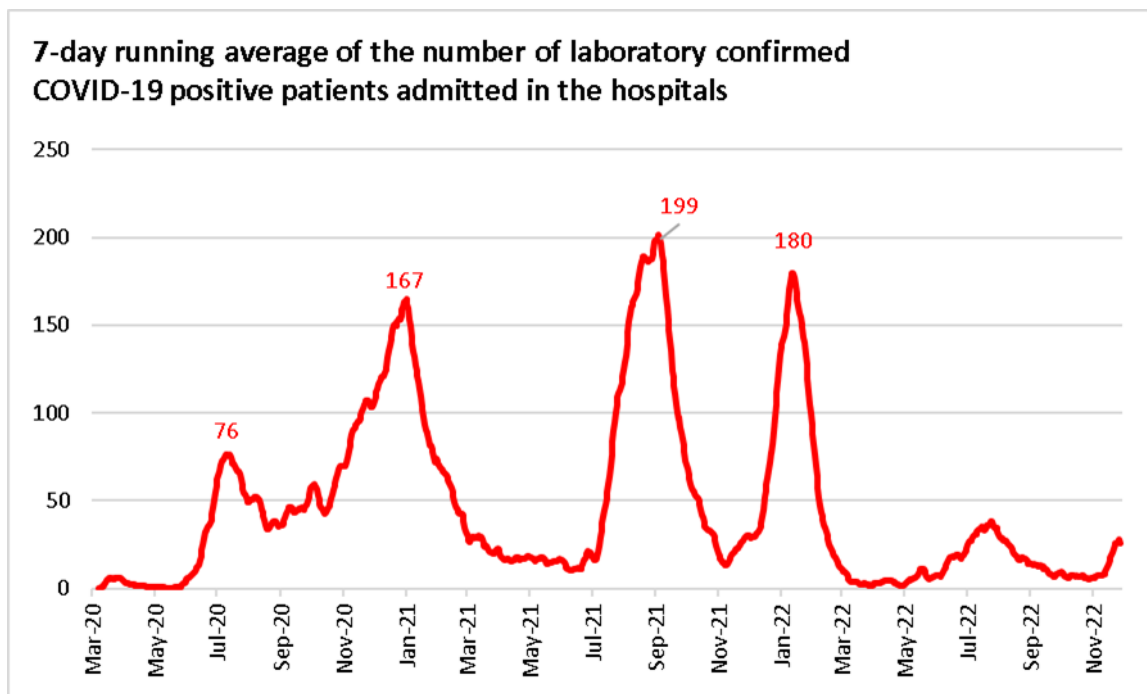
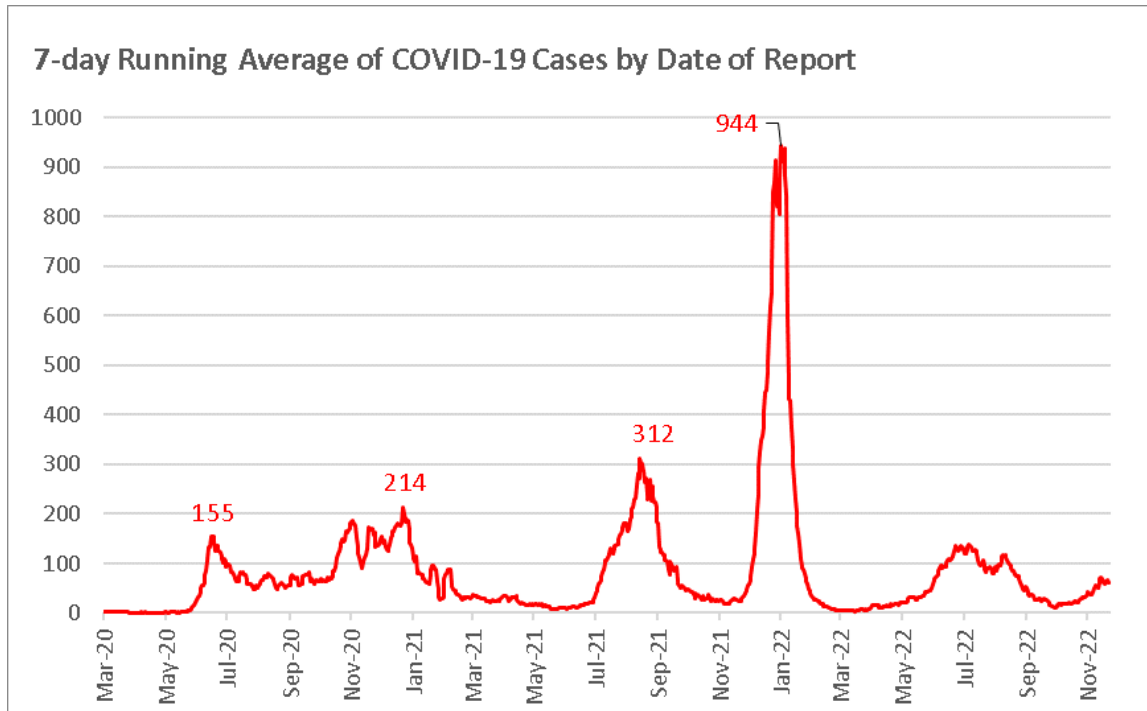
	November 26- December 2, 2022	December 3-9, 2022	Percent Change from previous week to this week
<b>REPORTED CASES</b>			
<b>New Cases</b>	429	412	<b>-4%</b>
<b>Confirmed Cases</b>	196	202	
<b>Probable Cases</b>	233	210	
<b>7-day average number of cases per day</b>	51	59	<b>+16%</b>
<b>7-day incidence rate per 100k per day</b>	20	23	<b>+15%</b>
<b>HOSPITAL ADMISSIONS AND FATALITIES</b>			
<b>7-day average number of Lab confirmed COVID-19 patients admitted in the hospitals</b>	17	25	<b>+47%</b>
<b>New Fatalities</b>	0	2	<b>+100%</b>

\*Testing data and positivity rate can be found on the [COVIDWaco.com](https://www.COVIDWaco.com) website.

# COVID-19 Status Report

## November 26 - December 9, 2022

### TRENDS GRAPHS

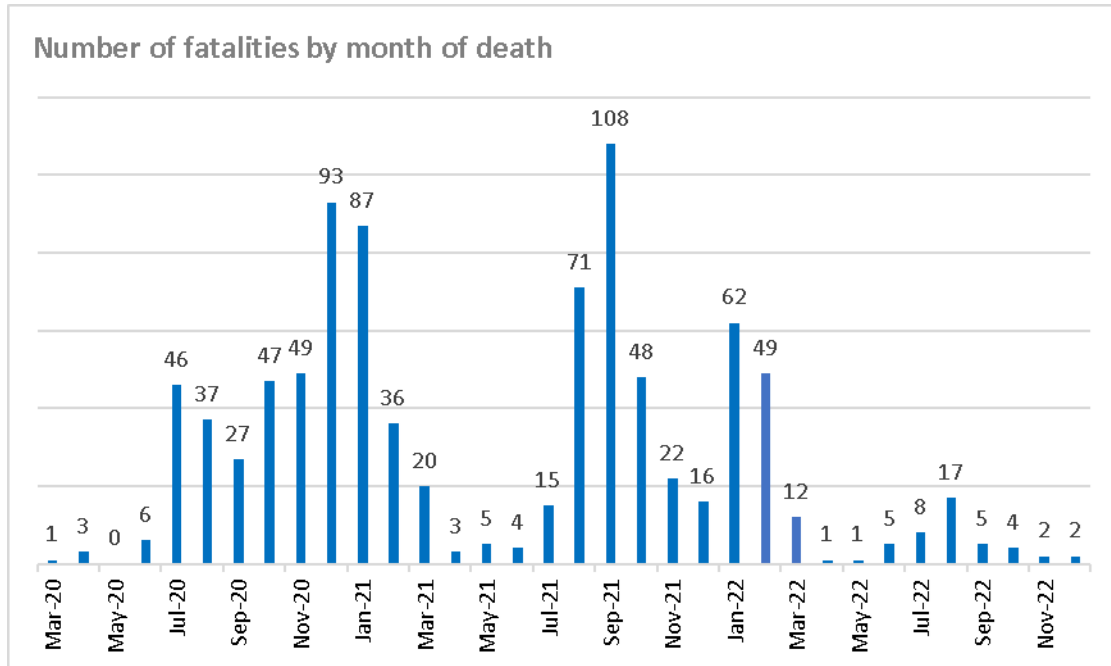


Additional data can be found on [covidwaco.com](https://covidwaco.com)

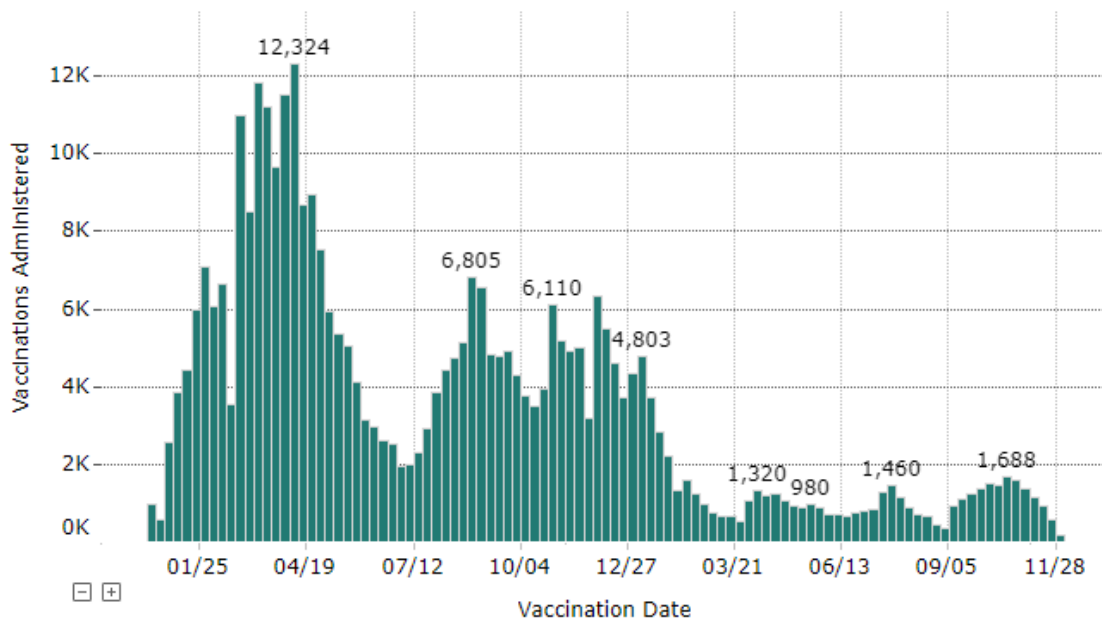
# COVID-19 Weekly Status Report

November 26 - December 9, 2022

## TRENDS GRAPHS



Vaccinations by Week in McLennan County



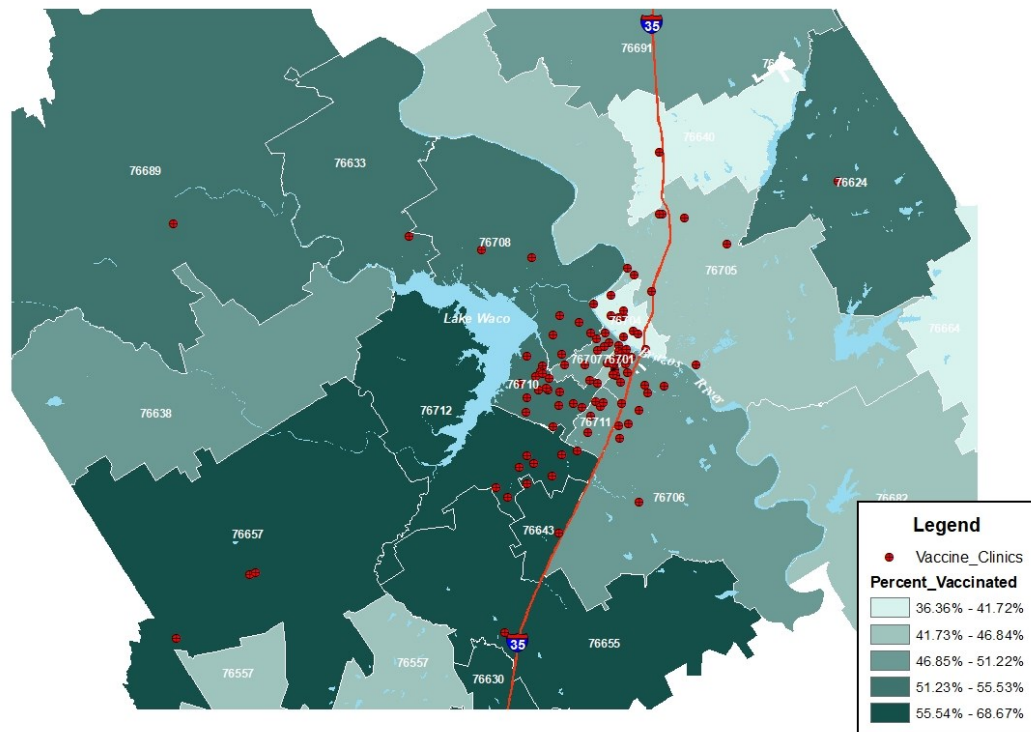
Additional data can be found on [covidwaco.com](https://covidwaco.com)

# COVID-19 Status Report

## November 26 - December 9, 2022

### HEALTH DISTRICT VACCINATION CLINICS

Figure 4. Community-based Vaccination Clinics Hosted by the Health District



Row Labels	Count of Clinics Hosted	Total Doses Given
Church	74	1279
City/County Campus	36	408
Community Center	13	192
Community Event	47	692
First Responders	8	85
FQHC	2	17
Homeless Shelters	9	135
Hospitals	3	30
Jails	11	343
Libraries	2	28
Manufacturing/Private Employer	156	2752
Non-Profits	54	635
Other	74	1001
School	2	54
Schools	253	7575
(blank)		47983
<b>Grand Total</b>	<b>744</b>	<b>63209</b>